



**THE DATASHEET OF  
BSN10-D**



THIS COPY IS PROVIDED ON A RESTRICTED BASIS AND IS NOT TO BE USED IN ANY WAY DETRIMENTAL TO THE INTERESTS OF PANDUIT CORP.

NOTES:

- UL LISTED AND CSA CERTIFIED FOR:
  - A. 600 V MAX. VOLTAGE RATING
  - B. TEMPERATURE RATING OF INSULATION: 150° (221° F)
  - C. SOLID OR STRANDED, COPPER WIRE
- MATERIAL:
  - A. STAMPING (22-18 & 16-14) - .03 [0.8] THK COPPER, TIN PLATED
  - B. STAMPING (12-10) - .04 [1.0] THK COPPER, TIN PLATED
  - C. BRAZED SEAM
  - D. HOUSING - NYLON
- ALL DIMENSIONS ARE IN INCHES EXCEPT DIMENSIONS IN BRACKETS WHICH ARE MILLIMETERS
- INSTALLATION TOOLS: CT-100, CT-1550, CT-1551
- \* 12-10 AWG STRANDED AND 12 AWG SOLID COPPER WIRE WITH CT-1550 & CT-1551 TOOLS  
 \*\* 18-14 AWG WIRE RANGE WITH CT-1550 AND CT-1551 TOOLS  
 \*\*\* 22-16 AWG WIRE RANGE WITH CT-1550 AND CT-1551 TOOLS
- WIRE STRIP LENGTH:
 

BSN18 & BSN14	-	9/32	+	1/32	[	7.1	+	0.8	]
BSN10	-	9/32	+	1/32	[	7.1	+	0.8	]
- SEE [www.PANDUIT.COM](http://www.PANDUIT.COM) FOR PACKAGE QUANTITIES INDICATED BY PART NUMBER SUFFIX

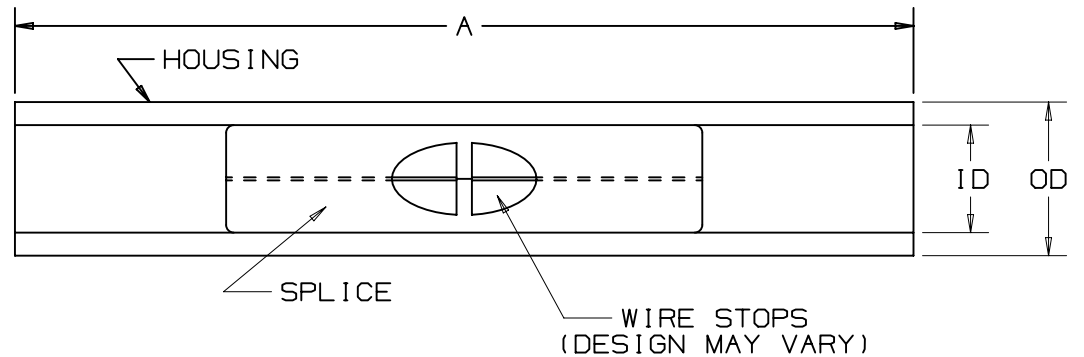
PANDUIT PART NUMBER	WIRE RANGE (AWG)	COLOR CODE	DIMENSIONS in.			
			MAX WIRE INSUL DIA	A ±.020 (.51)	ID ±.020 (.51)	OD ±.020 (.51)
BSN18	***22-18	RED	.115 (2,92)	1.15 (29,2)	0.13 (3,3)	0.20 (5,1)
BSN14	**16-14	BLUE	.148 (3,76)	1.15 (29,2)	0.15 (3,9)	0.20 (5,1)
BSN10	*12-10	YELLOW	.210 (5,33)	1.14 (29,0)	0.21 (5,3)	0.27 (6,8)



LISTED  
587H  
E52164



CERTIFIED  
LR31212



13	2/15	TMR	TMR	RGB	ADDED NOTE ON BRAZED SEAM AND PACKAGING REVISED TITLE BLOCK															

TITLE <b>NYLON INSULATED BUTT SPLICES</b>			
CUSTOMER DRAWING			
ITEM REVISION NAME	N41182BA/13		
DATASET FILE NAME	N41182BA/13		
UNLESS OTHERWISE SPECIFIED, DIMENSIONAL TOLERANCES ARE: IN [ mm ]			MATERIAL:
.X ±	.XXX ±		
.XX ±	ANGLES ±		
THIRD ANGLE PROJECTION			DRAWING NUMBER: <b>A41182</b>

REV	DATE	BY	CHK	APR	DESCRIPTION	ECN	DRAWN BY FES	DATE	CHK RLS	SCALE N/A	SHT 1 OF 1	SIZE A
-----	------	----	-----	-----	-------------	-----	-----------------	------	------------	--------------	------------	-----------

D10100DA/16

## Looking for pricing, stock, or lifecycle information?

Click below to explore more details on WIN SOURCE:

 [View BSN10-D on WIN SOURCE](#)

 [Panduit Corp](#) Information

## Optimize Your Supply Chain with WIN SOURCE Solutions

-  Global Sourcing Solution
-  Obsolete Management
-  Cost Control Management
-  Shortage Management
-  Alternative Solution
-  Excess Inventory Management