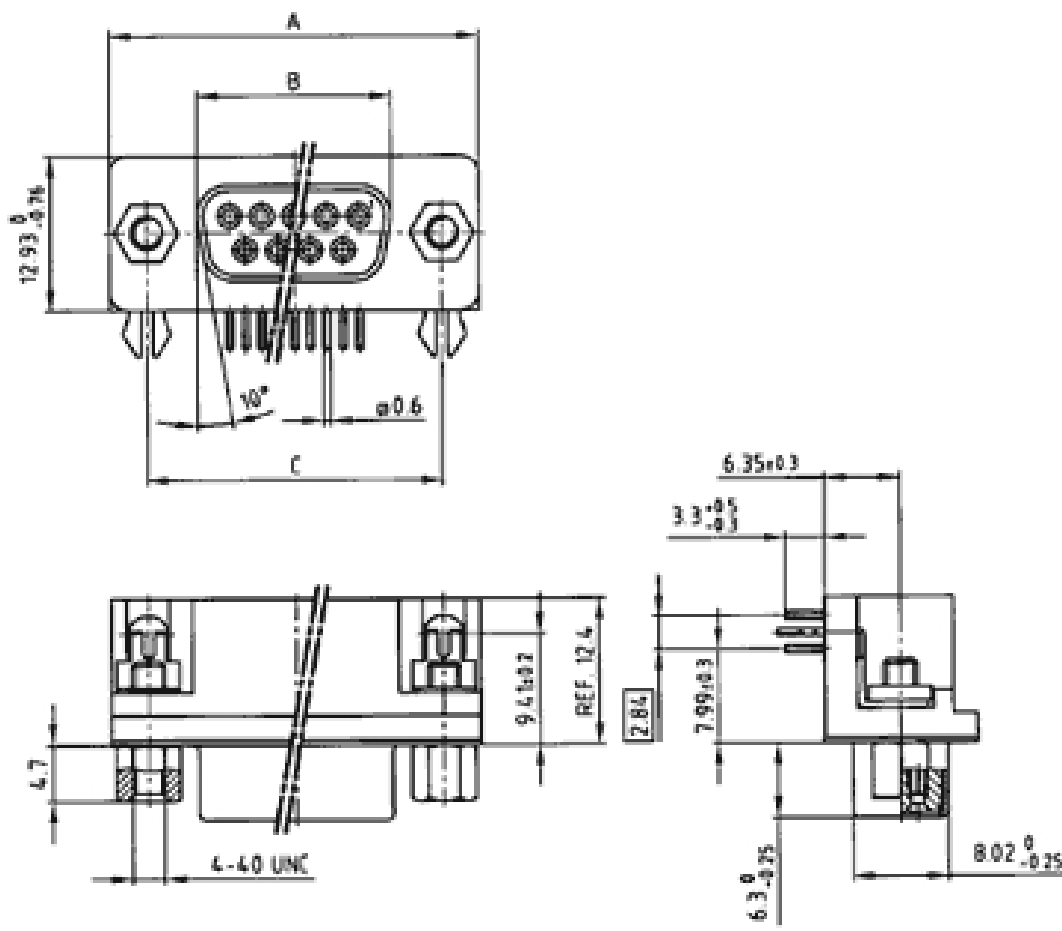


D-Sub Connector
Solder pin angled .318"
stamped contacts
with threaded lock and clip

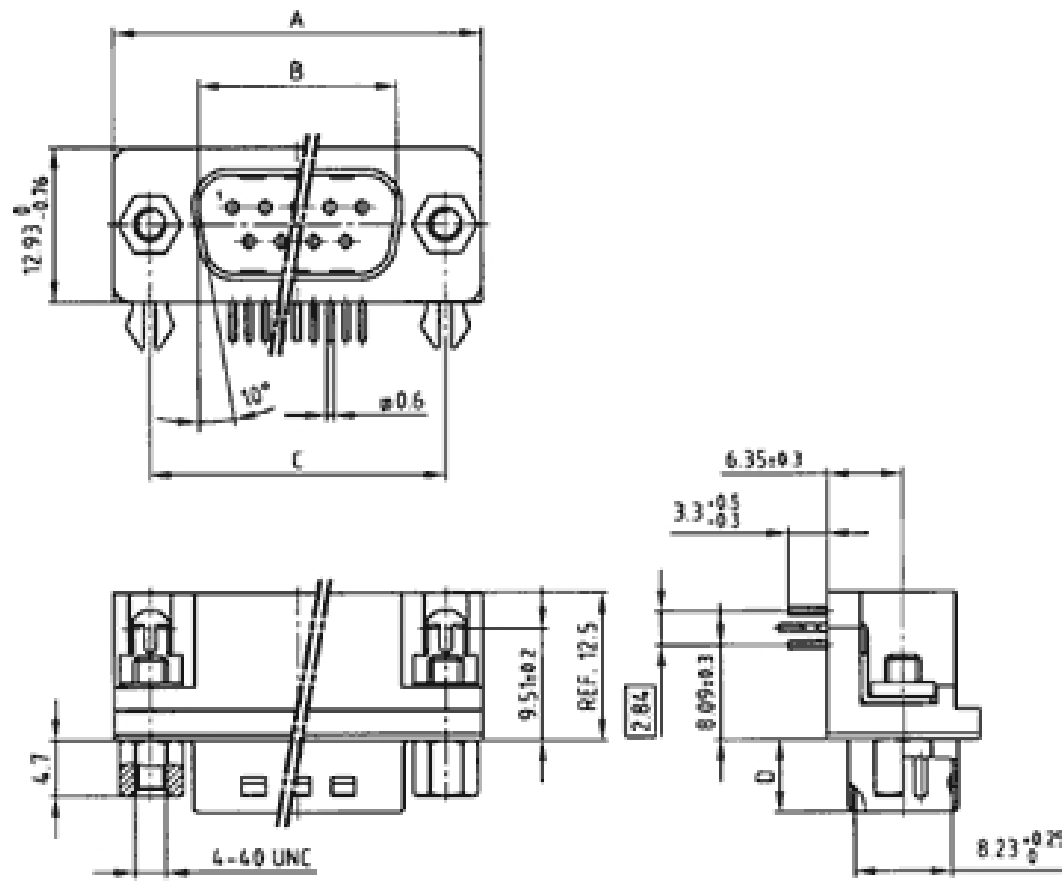


(click on the schematic(s) for a more detailed view)

Socket connector



Plug connector



Dimension for Socket Connectors

No. of Pos.	A _{-0.75}	B _{-0.25}	C
9	31.19	16.46	25.00 ^{+0,12} _{-0,13}
15	39.52	24.79	33.30 ^{+0,15} _{-0,10}
25	53.42	38.50	47.04 ^{+0,13}
37	69.70	54.96	63.50 ^{+0,13}

Dimension for Plug Connectors

No. of Pos.	A _{-0.75}	B ^{+0.25}	C	D _{-0.30}
9	31.19	16.79	25.00 ^{+0,12} _{-0,13}	6.12
15	39.52	25.12	33.30 ^{+0,15} _{-0,10}	6.12
25	53.42	38.84	47.04 ^{+0,13}	5.99
37	69.70	55.30	63.50 ^{+0,13}	5.99

Part Numbers

No. of Pos.	Socket connector tin - plated	
	Non RoHS Compliant	RoHS Compliant
9	302 A 11249 X	DLS1XS5AK40X
15	302 A 11259 X	DLS2XS5AK40X
25	302 A 11269 X	DLS3XS5AK40X
37	302 A 11279 X	DLS4XS5AK40X

No. of Pos.	Plug connector tin - plated with ground indent	
	Non RoHS Compliant	RoHS Compliant
9	301 A 10939 X	DLS1XP5AK40X
15	301 A 10949 X	DLS2XP5AK40X
25	301 A 10959 X	DLS3XP5AK40X
37	301 A 10969 X	DLS4XP5AK40X



Looking for pricing, stock, or lifecycle information?

Click below to explore more details on WIN SOURCE:

 [View DLS1XS5AK40X on WIN SOURCE](#)

 [Manufacturer Information](#)

Optimize Your Supply Chain with WIN SOURCE Solutions

-  Global Sourcing Solution
-  Obsolete Management
-  Cost Control Management
-  Shortage Management
-  Alternative Solution
-  Excess Inventory Management