



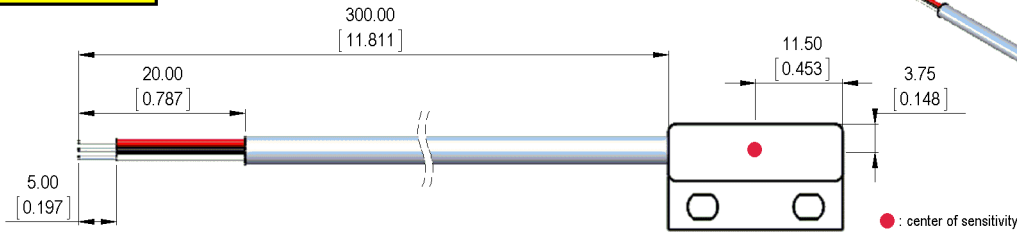
**THE DATASHEET OF
MH04-11S-300W**



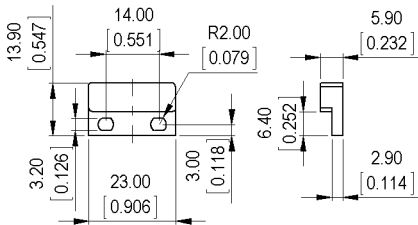


Dimensions mm[inch]
 tolerances acc. to DIN ISO 2768-m
 Toleranzen gem. DIN ISO 2768-m

Isometric
 Scale 1:2
 Maßstab 1:2



Housing

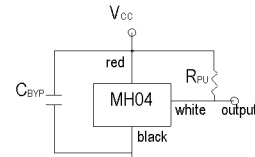


Cable
 round cable UL/CSA LIYY AWG 26, grey
 color of wires: red, black, white

Terminals/Connector

Ends tinned
 red: V_{CC}
 black: Ground
 white: Output

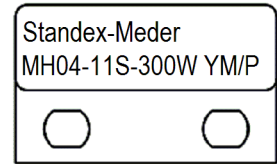
Typical External Circuit



Add external pull-up resistor (R_{PU}) for sinking output between V_{CC} and Output
 Add external bypass capacitor (C_{BY}) close to the sensor to reduce external noise as needed

Marking

according to EN60062/factory code
 gem. EN60062/Fertigungsstätte



Magnetic properties	Conditions	Min	Typ	Max	Unit
Hall Type			Switch		
Operation			Unipolar		
Output On	T=25C and VDD=12V		35		Gauss
Output Off	T=25C and VDD=12V		25		Gauss
Hysteresis	T=25C and VDD=12V		10		Gauss



Technical data	Conditions	Min	Typ	Max	Unit
Supply voltage		3		24	VDC
Supply current				4	mA
Operating temperature range		-40		85	°C
Storage temperature		-60		105	°C

Cable specification	Conditions	Min	Typ	Max	Unit
Cable type			round cable		
Strand number			3		
Structure of strands			AWG 26 7x0,16		
Insulation single strands			PVC		
Strands color			red, black, white		
Insulation cable sheath			PVC		
Sheath color	DIN 47100		grey		
Outer diameter of a cable jacket			3.8		mm

General data	Conditions	Min	Typ	Max	Unit
Tightening torque	Screw M3 ISO 1207 Disk ISO 7089			0.5	Nm
Mounting advice		decreased switching distances when mounted near iron			
Mounting advice		magnetically conductive screws must not be used			
Case color		white			
Sealing compound		Polyurethan			
Remark		direct custom inquiries to sales@standexmeder.com			

Looking for pricing, stock, or lifecycle information?

Click below to explore more details on WIN SOURCE:

-  [View MH04-11S-300W on WIN SOURCE](#)
-  [Standex-Meder Electronics](#) Information

Optimize Your Supply Chain with WIN SOURCE Solutions

-  Global Sourcing Solution
-  Obsolete Management
-  Cost Control Management
-  Shortage Management
-  Alternative Solution
-  Excess Inventory Management