



THE DATASHEET OF MHPS2285



MHPS SERIES KEY SWITCHES

FEATURES

- Double pole - double throw and 4 pole - double throw configurations.
- Momentary (non-locking) and maintained action (locking) models.
- Shorting and non-shorting contacts.
- Audible ('click') and non-audible action models.

GENERAL SPECIFICATIONS

| | |
|----------------------------------|--------------------------------|
| Contact rating: | 100 mA @ 30 VDC |
| Insulation resistance: | 100 megohms minimum at 500 VDC |
| Dielectric withstanding voltage: | 500 VAC for 1 minute |
| Contact resistance: | 100 milliohms maximum |
| Life: | 10,000 cycles minimum |
| Operating temperature range: | -20°C to +65°C |

SOLDERING

| | |
|-------------------|------------------------------------|
| Wave soldering: | 260°C max. for 5 seconds maximum |
| Manual soldering: | 350°C ± 10°C for 3 seconds maximum |
| Solvent washing: | Non-washable. |

MATERIALS

| | |
|-------------------|---|
| Case: | PBT (model MHPS2266 only - Type 6/6 nylon) |
| Cover: | Acetal (model MHPS2266 only - Type 6/6 nylon) |
| Actuator: | Acetal |
| Terminals: | Silver plated brass |
| Shorting Contact: | Silver plated phosphor bronze |

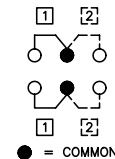
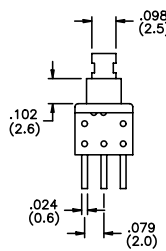
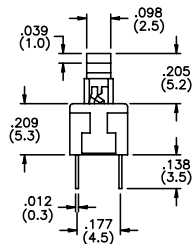
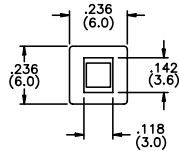
SPECIFICATIONS SUBJECT TO CHANGE WITHOUT NOTICE.

US # MHPS2266

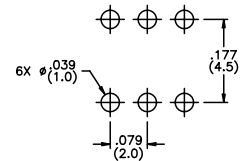
Travel: full-.075" (1.9mm)
to lock-.039" (1mm)
Operating force: 140±50g



DOUBLE POLE



SCHEMATIC



P.C. board layout

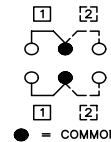
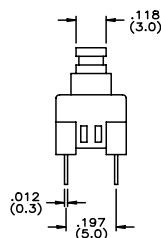
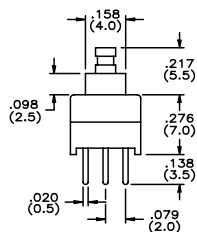
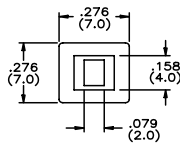
| US Model No. | Action | Contacts | Audible |
|------------------|----------|-------------|---------|
| MHPS2266 | maint'd. | non-sh't'g. | no |
| MHPS2266N | mom. | non-sh't'g. | no |

US # MHPS2273 EU # PHAP4673

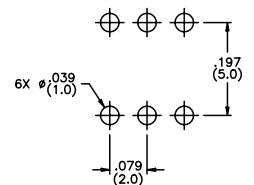
Travel: full-.071" (1.8mm)
to lock-.039" (1mm)
Operating force: 200gf ± 50gf



DOUBLE POLE



SCHEMATIC



P.C. board layout

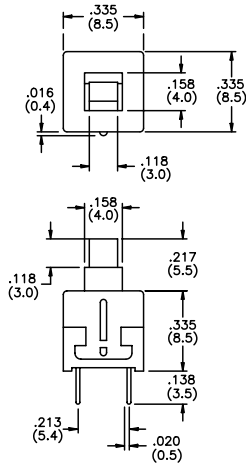
| US Model No. | Action | Contacts | Audible | EU Model No. |
|------------------|----------|-------------|---------|-----------------|
| MHPS2273 | maint'd. | non-sh't'g. | no | PHAP4673 |
| MHPS2273N | mom. | non-sh't'g. | no | N/A |

US # MHPS2283
EU # PHAP4683W

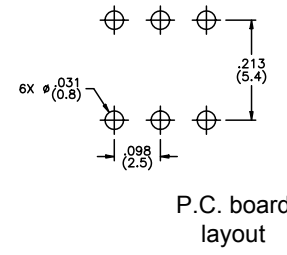
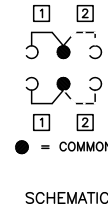
Travel: full-.098" (2.5mm)
to lock-.059" (1.5mm)
Operating force: 180±50g



DOUBLE POLE



| US Model No. | Action | Contacts | Audible | EU Model No. |
|------------------|----------|------------|---------|------------------|
| MHPS2283 | maint'd. | non-sht'g. | yes | PHAP4683W |
| MHPS2283N | mom. | non-sht'g. | no | N/A |
| MHPS2283V | mom. | non-sht'g. | yes | PHAP4383V |

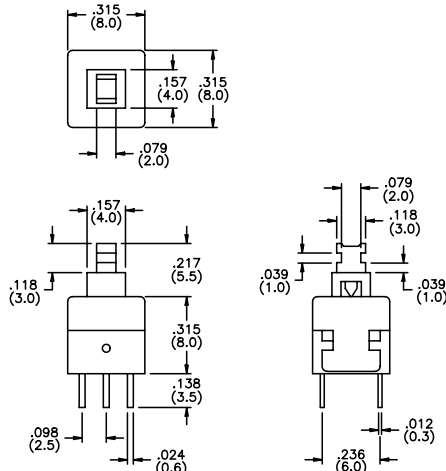


US # MHPS2285

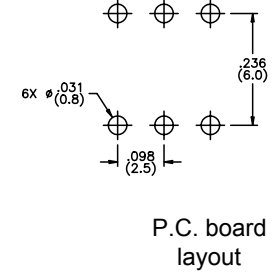
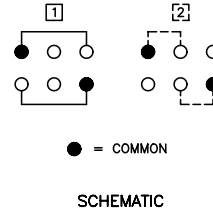
Travel: full-.098" (2.5mm)
to lock-.059" (1.5mm)
Operating force: 180±50g



DOUBLE POLE



| Model No. | Action | Contacts | Audible |
|------------------|----------|------------|---------|
| MHPS2285 | maint'd. | non-sht'g. | yes |
| MHPS2285N | mom. | non-sht'g. | no |
| MHPS2285V | mom. | non-sht'g. | yes |

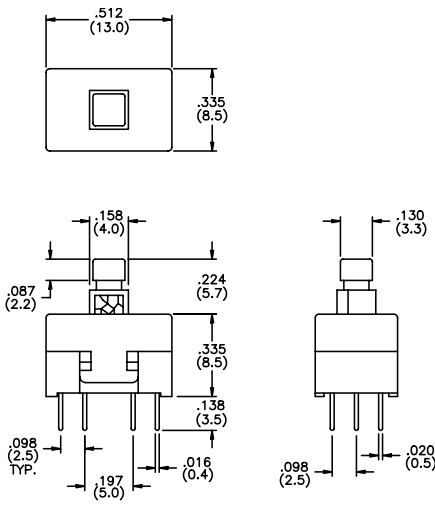


US # MHPS4284

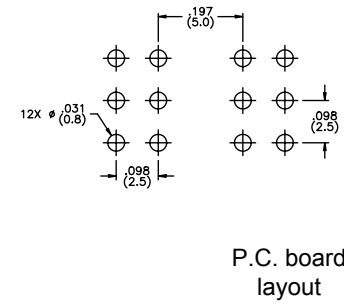
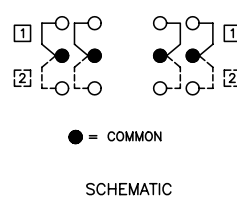
Travel: full-.098" (2.5mm)
to lock-.059" (1.5mm)
Operating force: 180g
+100g, -50g



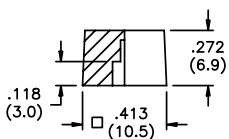
FOUR POLE



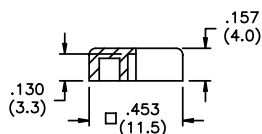
| Model No. | Action | Contacts | Audible |
|------------------|----------|------------|---------|
| MHPS4284 | maint'd. | non-sht'g. | no |
| MHPS4284N | mom. | non-sht'g. | no |
| MHPS4284V | mom. | non-sht'g. | yes |



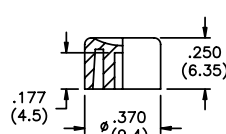
CAPS (fit MHPS2273, MHPS2283 and MHPS2285 models only)



MH1 Square cap



U4520 Square cap



U4530 Round cap

Note - add digit from table to cap part number for color.
Example - **MH12** indicates black cap.

| No. | Color |
|-----|--------|
| 1 | blue |
| 2 | black |
| 3 | green |
| 5 | yellow |
| 6 | red |
| 7 | ivory |

SPECIFICATIONS SUBJECT TO CHANGE WITHOUT NOTICE.

Looking for pricing, stock, or lifecycle information?

Click below to explore more details on WIN SOURCE:

 [View MHPS2285 on WIN SOURCE](#)

 [Apem Inc. Information](#)

Optimize Your Supply Chain with WIN SOURCE Solutions

-  Global Sourcing Solution
-  Obsolete Management
-  Cost Control Management
-  Shortage Management
-  Alternative Solution
-  Excess Inventory Management