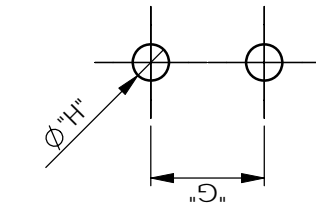
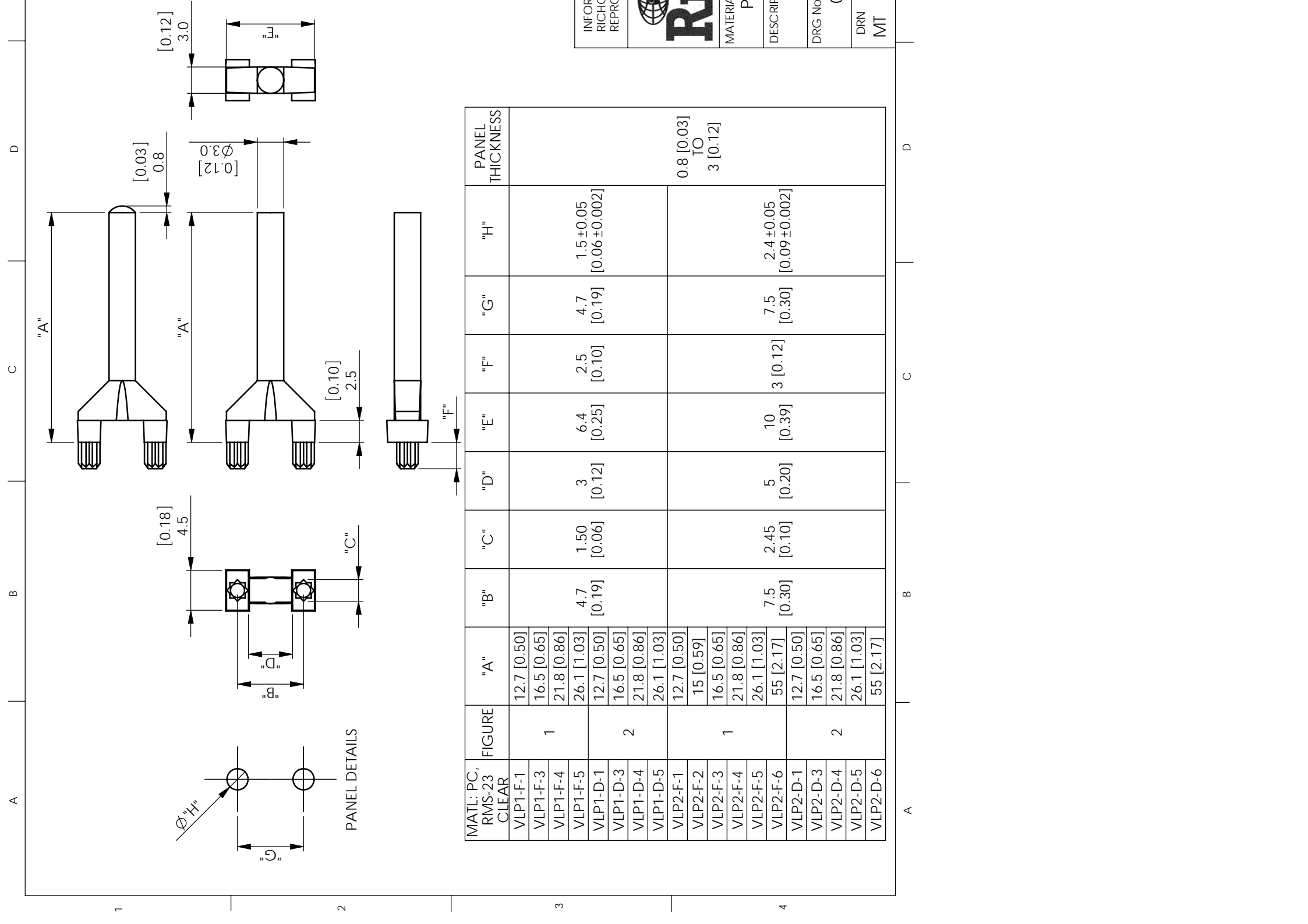




# THE DATASHEET OF VLP2-F-2





PANEL DETAILS

MATL: PC, RMS-23 CLEAR	FIGURE	"A"	"B"	"C"	"D"	"E"	"F"	"G"	"H"	PANEL THICKNESS
VLP1-F-1	1	12.7 [0.50]	4.7 [0.19]	1.50 [0.06]	3 [0.12]	6.4 [0.25]	2.5 [0.10]	4.7 [0.19]	1.5±0.05 [0.06±0.002]	0.8 [0.03] TO 3 [0.12]
VLP1-F-3		16.5 [0.65]								
VLP1-F-4		21.8 [0.86]								
VLP1-F-5		26.1 [1.03]								
VLP1-D-1		12.7 [0.50]								
VLP1-D-3	2	16.5 [0.65]	7.5 [0.30]	2.45 [0.10]	5 [0.20]	10 [0.39]	3 [0.12]	7.5 [0.30]	2.4±0.05 [0.09±0.002]	
VLP1-D-4		21.8 [0.86]								
VLP1-D-5		26.1 [1.03]								
VLP2-F-1		12.7 [0.50]								
VLP2-F-2		15 [0.59]								
VLP2-F-3	1	16.5 [0.65]	7.5 [0.30]	2.45 [0.10]	5 [0.20]	10 [0.39]	3 [0.12]	7.5 [0.30]	2.4±0.05 [0.09±0.002]	
VLP2-F-4		21.8 [0.86]								
VLP2-F-5		26.1 [1.03]								
VLP2-F-6		55 [2.17]								
VLP2-D-1		12.7 [0.50]								
VLP2-D-3	2	16.5 [0.65]	7.5 [0.30]	2.45 [0.10]	5 [0.20]	10 [0.39]	3 [0.12]	7.5 [0.30]	2.4±0.05 [0.09±0.002]	
VLP2-D-4		21.8 [0.86]								
VLP2-D-5		26.1 [1.03]								
VLP2-D-6		55 [2.17]								

INFOR RICH REPR		MATERIA P	DESCRIP P	DRG No (	DRN MT
-----------------------	--	--------------	--------------	-------------	-----------

## Looking for pricing, stock, or lifecycle information?

Click below to explore more details on WIN SOURCE:

- ⊖ [View VLP2-F-2 on WIN SOURCE](#)
- ⊖ [Essentra Components](#) Information

## Optimize Your Supply Chain with WIN SOURCE Solutions

- ✓ Global Sourcing Solution
- ✓ Obsolete Management
- ✓ Cost Control Management
- ✓ Shortage Management
- ✓ Alternative Solution
- ✓ Excess Inventory Management