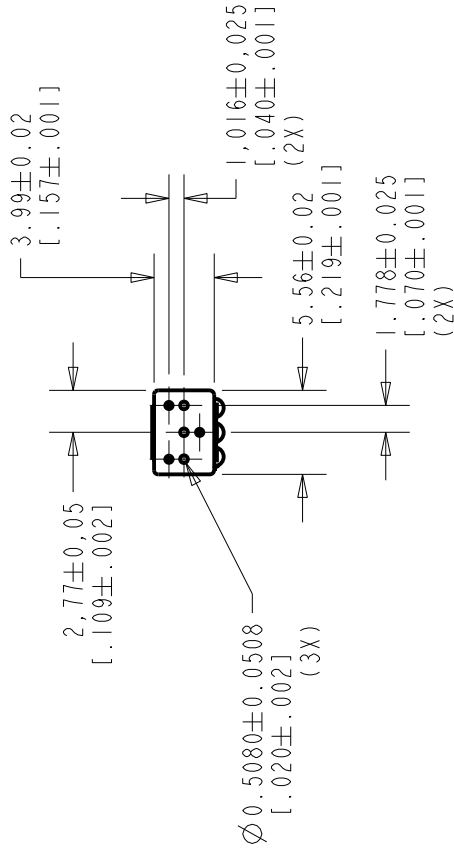




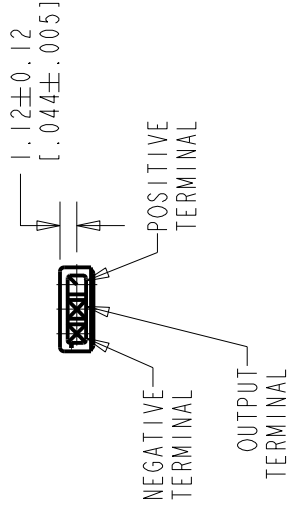
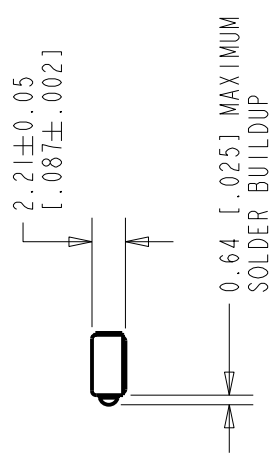
**THE DATASHEET OF  
WP-23502-000**





**NOTE:**

- INCREASED PRESSURE INLET CAUSES A TO APPEAR AT THE RELATIVE TO THE



NOMINAL WEIGHT  
.13 GRAM

DIMENSIONS IN MILLIMETERS [INCHES]

| Revision | C.O. #    | Implementation Date | RM |
|----------|-----------|---------------------|----|
| B        | M10105331 | 12-25-13            | A  |
| A        | M10100924 | 11/23/05            |    |

SCALE:

2:1

**KNOWLES ELECTRONICS**  
ITASCA, ILLINOIS U.S.A.

DO NOT SCALE DRAWING

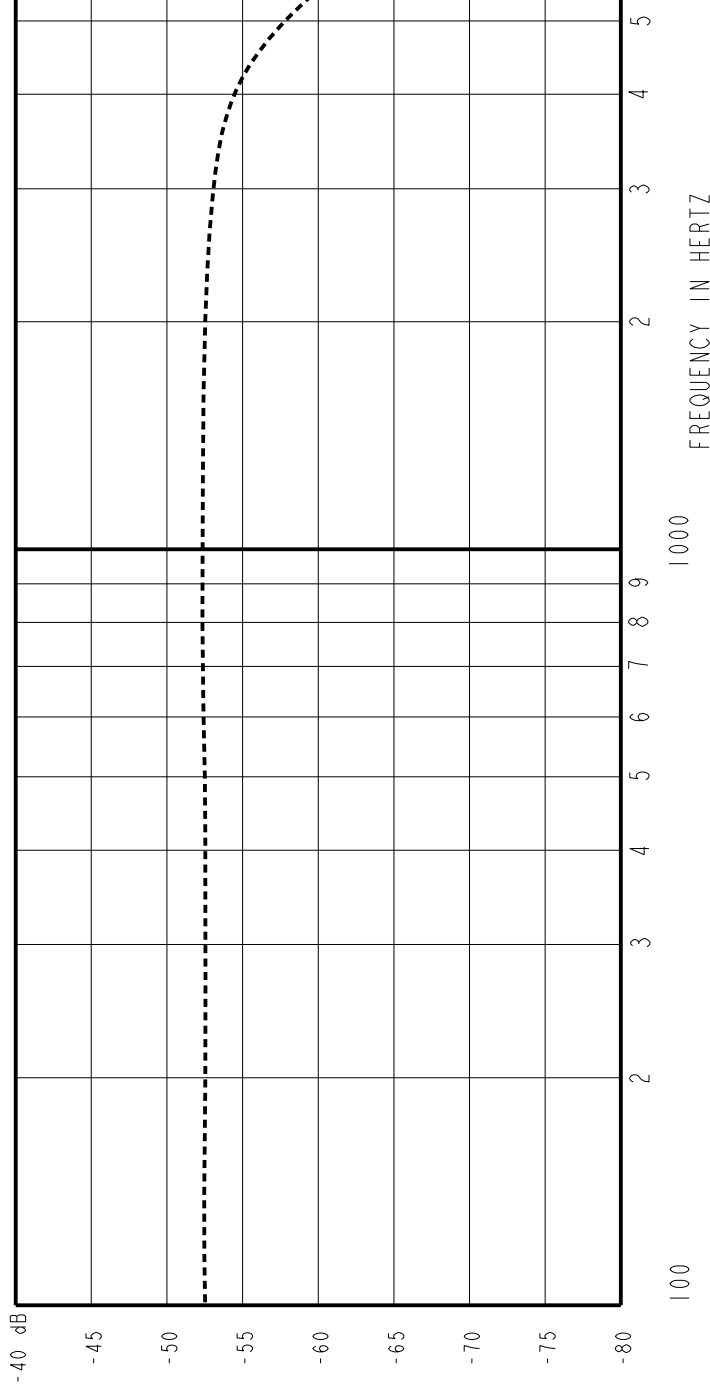
**MICROPHONE**

**WP-235**

OUTLINE DRAWING

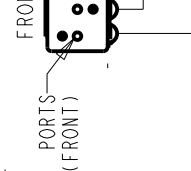
SHT

SENSITIVITY IN DB RELATIVE TO 1.0 VOLT/0.1 Pa (N/M<sup>2</sup>)  
FOR CONDITIONS NOTED BELOW.



| FREQUENCY | SENSITIVITY |       |
|-----------|-------------|-------|
|           | MIN.        | NOM.  |
| 100       | ---         | -52.0 |
| 1000      | -55.0       | -52.0 |
| 4000      | ---         | -53.0 |

| DEVICE CONFORMITY             |       |
|-------------------------------|-------|
| RANGE OF DEVIATION FROM 1 KHZ | MAX.  |
| -2.0                          | ---   |
| 0.0                           | -49.0 |
| -4.0                          | ---   |



| DC SUPPLY | AMPLIFIER CURRENT DRAIN | OUTPUT IMPEDANCE OHMS |           |
|-----------|-------------------------|-----------------------|-----------|
|           |                         | MIN.                  | NOM. MAX. |
| 1.3V      | 50uA MAX.               | 2800                  | 4400 6800 |

- NOTES:
- CASE CONNECTED TO NEGATIVE TERMINAL.
  - MICROPHONE TO BE FUNCTIONAL WITH 10 VDC SUPPLY.
  - SENSITIVITY VALUES INDICATED ON THIS SPECIFICATION ARE VALID AT 50% HUMIDITY.
  - MICROPHONE WILL SURVIVE SUBMERSION IN 3M OF WATER.

| Revision | C.O. #    | Implementation Date | Rev |
|----------|-----------|---------------------|-----|
| B        | M10105331 | 12-25-13            | A   |
| A        | M10100924 | 11/23/05            |     |

SCALE: 2:1

**KNOWLES ELECTRONICS**  
ITASCA, ILLINOIS U.S.A.

DO NOT SCALE DRAWING

TITLE: **MICROPHONE**

WP-235

OUTLINE DRAWING

SHT

## Looking for pricing, stock, or lifecycle information?

Click below to explore more details on WIN SOURCE:

 [View WP-23502-000](#) on WIN SOURCE

 [Knowles](#) Information

## Optimize Your Supply Chain with WIN SOURCE Solutions

-  Global Sourcing Solution
-  Obsolete Management
-  Cost Control Management
-  Shortage Management
-  Alternative Solution
-  Excess Inventory Management