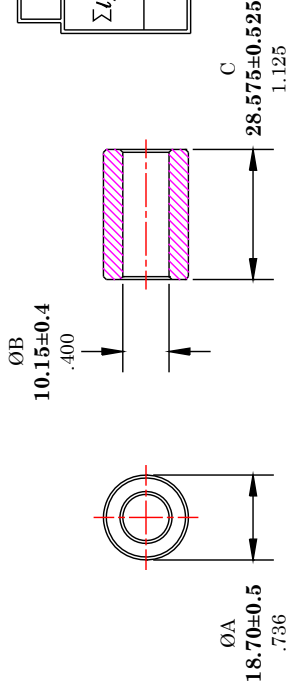




\*\* Not all features are shown in this drawing. For more detailed information, please contact your Fair-Rite representative.

UNCONTROLLED ~ CATALOG ~ DRAWING

SIZE  
B



ELECTRICAL SPECIFICATION				
$\Sigma l/A(\text{mm}^{-1})$	$l_e$ (mm)	$A_e$ (mm <sup>2</sup> )	$V_e$ (mm <sup>3</sup> )	IMPEDANCE (OHMS) SP
				$L_o$ (nH)
0.361	42.6	118	5023	0.5 MHz
				1.0 MHz
				45 Min.
				70 Min.
				N=

DIMENSIONS  
**BOLD NUMBERS ARE IN MILLIMETERS**  
LIGHT NUMBERS ARE IN INCHES

NOTES:

- 1 - BURNISH TO BREAK SHARP EDGES.
- 2 - IMPEDANCE MEASURED ON AN HP4285A, USING AN HP16047E TEST FIXTURE.
- 3 - PARTS TO MEET FAIR-RITE PRODUCTS CORP. GENERIC VISUAL CRITERIA FOR SHIELD BEADS AND ROUND CABLE CORES.

FR# 75

<b>FAIR-RITE</b>	
TITLE	ROUND S
DRAWN BY D. FOOTE	DATE 3/10/2020
CHKD BY	SIZE B
APPROV BY	SCAL

## Looking for pricing, stock, or lifecycle information?

Click below to explore more details on WIN SOURCE:

- ⊖ [View 2675626402 on WIN SOURCE](#)
- ⊖ [FAIR-RITE PRODUCTS](#) Information

## Optimize Your Supply Chain with WIN SOURCE Solutions

- ✓ Global Sourcing Solution
- ✓ Obsolete Management
- ✓ Cost Control Management
- ✓ Shortage Management
- ✓ Alternative Solution
- ✓ Excess Inventory Management