



THE DATASHEET OF
8995202021



UNCONTROLLED ~ CATALOG ~ DRAWING

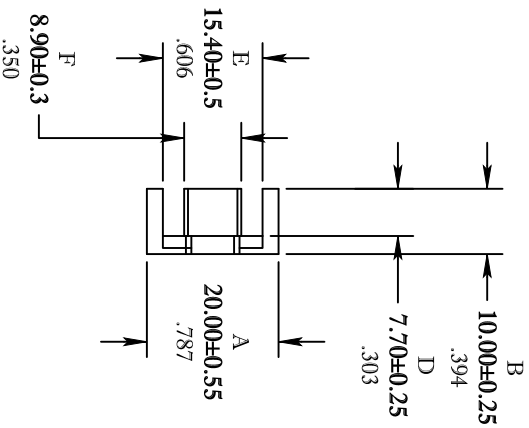
SIZE	PART NO.	REV.
B	8995202021	~

ELECTRICAL SPECIFICATIONS

$\Sigma l/A(\text{mm}^{-1})$	l_e (mm)	A_e (mm ²)	V_e (mm ³)	A_{MIN} (mm ²)	A_L (nH) @ 1 KHz <10 gauss
1.56	47.4	31	1440	29	1400±25%

MATE PAIR; CLAMPING FORCE = 10 lbs.

POWER LOSS @ 25°C
 f=100kHz, 2000g P.L. < .82 Watts
 POWER LOSS @ 100°C
 f=100kHz, 2000g P.L. < .82 Watts



DIMENSIONS
 ARE IN MILLIMETERS
 LIGHT NUMBERS ARE IN INCHES

FAIR-RITE PRODUCTS CORP.

EFD CORE

DRAWN BY J.SPERENCIS	DATE 07-13-2018	SIZE B	PART NO. 8995202021	REV. ~
CHKD BY		SCALE NONE	SHEET 1 of 1	
APPRVD BY				

FR# 95

Looking for pricing, stock, or lifecycle information?

Click below to explore more details on WIN SOURCE:

 [View 8995202021 on WIN SOURCE](#)

 [FAIR-RITE PRODUCTS](#) Information

Optimize Your Supply Chain with WIN SOURCE Solutions

-  Global Sourcing Solution
-  Obsolete Management
-  Cost Control Management
-  Shortage Management
-  Alternative Solution
-  Excess Inventory Management