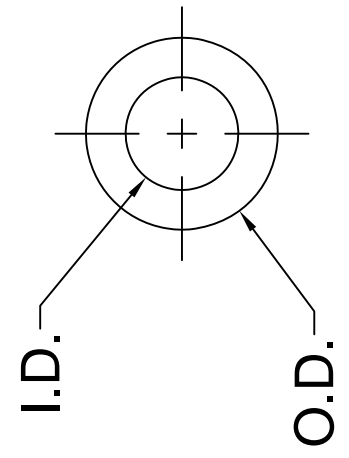




THE DATASHEET OF
9908-1.000



REV.	A	Engineering Update
	B	Typo Correction
	C	Remove 9910 P/N, Re
	D	Engineering Update



SERIES	SCREW SIZE	I.D.	O.D.	-XXX	H
9913	#2	.091(2.3mm)	.187(4.7mm)	-062	1/16 (1.6mm) 1/8 (3.2mm) 3/16 (4.8mm)
9908	#4	.125(3.2mm)	.187(4.7mm)	-250	1/4 (6.4mm) 5/16 (7.9mm) 3/8 (9.5mm)
9911	#4	.125(3.2mm)	.250(6.4mm)	-437	7/16 (11.1mm) 1/2 (12.7mm)
9905	#6	.147(3.7mm)	.250(6.4mm)	-562	9/16 (14.3mm) 5/8 (15.9mm) 3/4 (19.1mm)
9912	#8	.171(4.3mm)	.250(6.4mm)	-812	13/16 (20.6mm) 7/8 (22.2mm) 15/16 (23.8mm)
				-1000	1.0 (25.4mm)

3. TOLERANCE "H" DIMENSION:

- H ≤ 0.500 (12.7mm) ± 0.005 (0.1mm)
- H > 0.500 (12.7mm) ± 0.010 (0.3mm)

2. MATERIAL: NYLON 6, ULTRAMID 8270 HS, NATURAL. BIVAR MATERIAL CODE 01-NL-WE.

ALLIED CHEMICAL POLYAMID NYLON 6 WITH CLARIANT CNY02655 WHITE NYLON CONCENTRATE..


1. GENERAL SPECIFICATIONS: BIVAR EXTRUDED PRODUCT SPECIFICATION BV00-E103.

STANDARD TOLERANCES
(UNLESS OTHERWISE SPECIFIED)

DECIMALS	ANGU	X°
.X ± .1		
.XX ± .01		
.XXX ± .005		

DESIGNED: **Ty Yin**
CHECKED: **D. Green**

DATE: **02/2/20**
DATE: **02/2/20**



Looking for pricing, stock, or lifecycle information?

Click below to explore more details on WIN SOURCE:

 [View 9908-1.000 on WIN SOURCE](#)

 [Bivar Inc. Information](#)

Optimize Your Supply Chain with WIN SOURCE Solutions

-  Global Sourcing Solution
-  Obsolete Management
-  Cost Control Management
-  Shortage Management
-  Alternative Solution
-  Excess Inventory Management