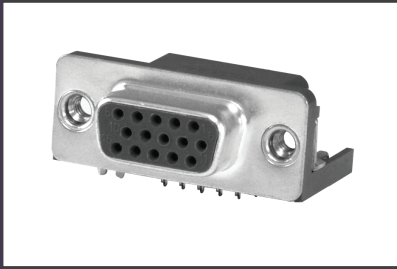




**THE DATASHEET OF
K61X-E15S-NJ-VESA**



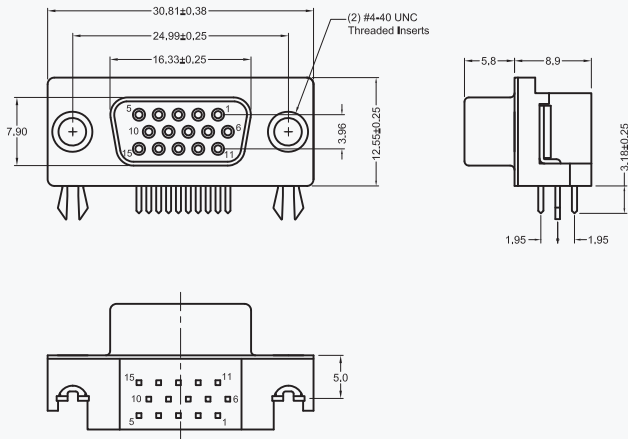


D-SUBMINIATURE CONNECTORS:
K61X Series
 High Density Right Angle PCB Mount Compact Footprint

Product Features
 15 Pin High Density D-Subminiature Receptacle, Right Angle PCB Termination, Compact Footprint
 Available in Reflow Compatible, High Temperature Plastic

VESA Features
 Contact #9 Recessed 0.050" (1.27mm) to Allow Last Mate/First Break on 5V Supply Voltage
 Blue PBT Insulator Signifies 5V Capability and Full Feature AccessBus Capability in Accordance with Video Electronics Standard Association (VESA)
 Meets Display Data Channel (DDC) Standard

K61X Series Dimensions
 Dimensions in mm



2D Drawing	IGES	STEP	3D PDF
Solder Profile	CofC RoHS Compliant	CofC REACH Compliant	UL Plastic File
Certificate of Origin	Check Stock	Request a Sample	Send Us An Email

Generated Part Number



Part Number Builder

<input type="text"/>	-	<input type="text"/>	<input type="text"/>	<input type="text"/>	<input type="text"/>	<input type="text"/>
Series		Shell Size Contact	Contact Type	Mounting Option	Plating Option	VESA Option

Series
K61X - High Density D-Subminiature Connector, Right Angle PCB Termination

Contact Shell Option
E - 15 Contacts

Contact Type
S - Socket Contact (Receptacle)

Mounting Option
N - With Boardlocks and #4-40 UNC Threaded Inserts
NJ - With Boardlocks and #4-40 Jackscrews Installed



Plating Option
Blank - Gold Flash
30 - 30µ" Gold

VESA Option
Blank - Standard
VESA - VESA Compliant Version

Contact Kycon for Other Options

Looking for pricing, stock, or lifecycle information?

Click below to explore more details on WIN SOURCE:

-  [View K61X-E15S-NJ-VESA on WIN SOURCE](#)
-  [Kycon, Inc. Information](#)

Optimize Your Supply Chain with WIN SOURCE Solutions

-  Global Sourcing Solution
-  Obsolete Management
-  Cost Control Management
-  Shortage Management
-  Alternative Solution
-  Excess Inventory Management