



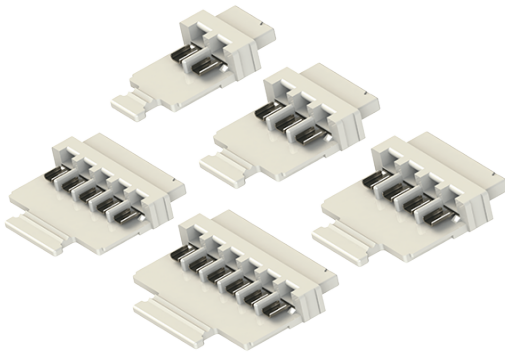
THE DATASHEET OF
119159003101116



SOLDER CUP PLUG: 11-9159-100



General Information



The 9159 Series board-to-board interconnect system allows two PCBs to be mated end-to-end to create LED lighting strips. Designed specifically for the unique Solid State Lighting (SSL) market that requires coplanar (horizontal-to-horizontal) PCB mating with a 5 amp current rating in the smallest package available. The wired connector is designed to bring power and signals to the PCB while maintaining the same board-level interface. This allows the designer to build a single PCB with a receptacle on one end and a connector on the other, minimizing cost and inventory. Regardless of where the PCB is used in the system, the wired connector provides the connection to the outside world. The optional latch can be inserted into the receptacle to provide a positive connection to the PCB in harsh environments without changing the PCB connector.

APPLICATIONS

- Provided Wire-to-Board capabilities to standard 9159 2-Piece connector system
- Application Notes: Refer to 201-01-123
- Product Specification: Refer to 201-01-119

FEATURES AND BENEFITS

- Mates with standard horizontal socket: no need to change any connectors
- 5 Amp current rating: exceeds general market needs
- Wires are soldered into connector with tie wrap strain relief: simplicity
- Optional latch: provides positive attachment to PCB connector
- UL Approved

ELECTRICAL

- Current Rating: 5 Amps / Contact
- Voltage Rating: 125 VAC (RMS) or DC equivalent

ENVIRONMENTAL

- Operating Temperature: -40°C to +125°C
- Storage Temperature: -40°C to +70°C

MECHANICAL

- Insulator Material: Nylon: VL94V0
- Contact Material: BeCu / Phos Bronze
- Plating: Gold / Tin over Nickel
- Durability: 10 Cycles

HOW TO ORDER

11	9159	00X	1	01	9	16
Prefix Wire Plug Soldered Terminations	Series	Number of Ways 002 = 2 003 = 3 004 = 4 005 = 5 006 = 6	2 Part PCB Strip Connector	Connector Pitch 01 = 3mm	Color 8 = UL Black 9 = UL White	Plating Option 16 = Gold in Contact Area, Tin on Solder Tail



NOTES: Connectors are supplied with cable ties (see 90-2211-7092-00-000).
Covers/Latches are sold separately (see table below).

Connector Assembly Part Number	Optional Components	
	Cover	Latch
11-9159-002-101-X16	60-9159-3302-0X*-000	60-9159-3402-0X*-000
11-9159-003-101-X16	60-9159-3303-0X*-000	60-9159-3403-0X*-000
11-9159-004-101-X16	60-9159-3304-0X*-000	60-9159-3402-0X*-000
11-9159-005-101-X16	60-9159-3305-0X*-000	60-9159-3403-0X*-000
11-9159-006-101-X16	60-9159-3306-0X*-000	60-9159-3402-0X*-000

* 0 = Black, 1 = White (cover/latch only)

Safety Standards: UL 1977-File #E90723, CSA C22.2 NO. 182.3



The Important Information/Disclaimer is incorporated in the catalog where these specifications came from or available online at www.kyocera-avx.com/disclaimer/ by reference and should be reviewed in full before placing any order.

Looking for pricing, stock, or lifecycle information?

Click below to explore more details on WIN SOURCE:

 [View 119159003101116 on WIN SOURCE](#)

 [AVX Corp/Kyocera Corp](#) Information

Optimize Your Supply Chain with WIN SOURCE Solutions

-  Global Sourcing Solution
-  Obsolete Management
-  Cost Control Management
-  Shortage Management
-  Alternative Solution
-  Excess Inventory Management