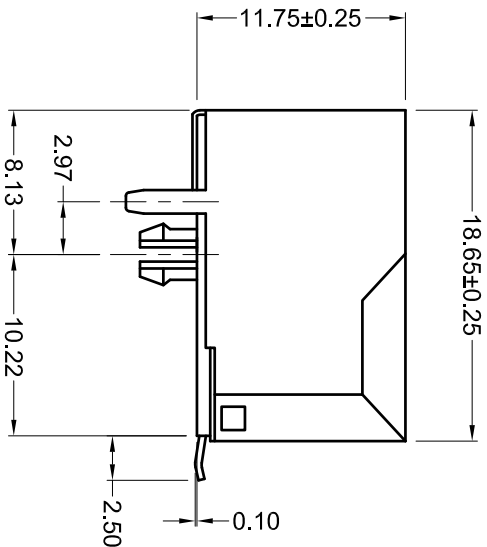
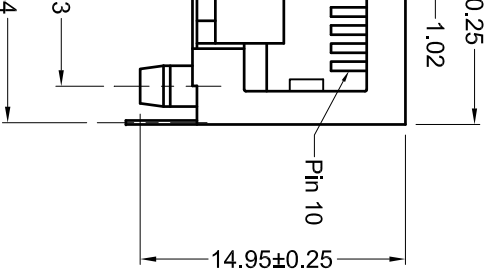




**THE DATASHEET OF
GMX-SMT2-S-1010**





Materials and Finish

Housing Material:

high temp. thermoplastic,
(reflow process compatible)
UL 94V-0 rated, black color

Design meets UL 1863 Sec. 8
Electrical Probe and Sec. 20
Child Finger test requirements

Contact Material: phosphor bronze

Contact Plating Options:

- Standard: 0.0001" Nickel
- Plating, Selective Plating
- Gold Flash on Contact Area, Tin on Termination End
- 50: 0.0001" Nickel Plating,
- Selective Plating 0.000050"

Gold on Contact Area to Comply with FCC Requirements Under No. 47 C.F.R. Part 68, Subpart F, Tin on Termination End

Electrical Characteristics

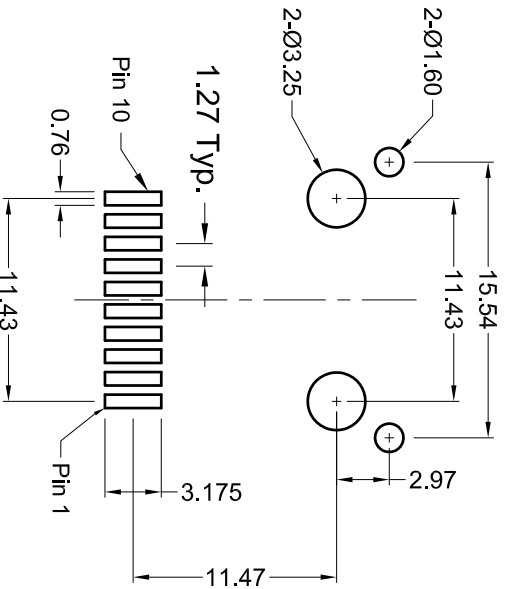
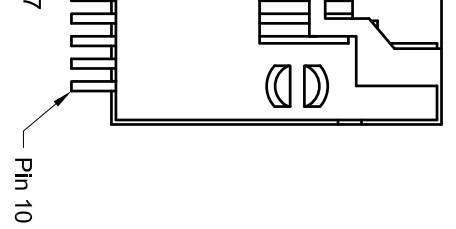
Current Rating: 1.0 Amps
Current Voltage: 125V DC
Insulation Resistance: 500 Megohms min.

Dielectric Withstanding Voltage: 1000V rms, 60Hz

Contact Resistance: 20 milliohms max.

Durability Rating: 1000 mating cycles min.

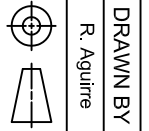
Operating Temperature: -40°C to +85°C



Recommended PCB Layout
(top view)

Rating	Packaging
h	Bulk
h	Bulk
h	Tape & Reel
h	Tape & Reel

V. BY	CHK. BY
Aguirre	H. MA
Vien	H. MA
Cook	P. DalCanto
H. MA	H. MA
H. MA	C. Furumatsu



DATE	05/23/05
UNITS	mm

GMX-SMT2-S-1010

Right Angle Modular Jack, Shielded RoHS Compliant
10 position, 10 contacts, Surface Mount



Tolerances	X.X ± 0.25
	X.XX ± 0.15
	Unless Stated
	Otherwise

Looking for pricing, stock, or lifecycle information?

Click below to explore more details on WIN SOURCE:

 [View GMX-SMT2-S-1010 on WIN SOURCE](#)

 [Kycon, Inc. Information](#)

Optimize Your Supply Chain with WIN SOURCE Solutions

-  Global Sourcing Solution
-  Obsolete Management
-  Cost Control Management
-  Shortage Management
-  Alternative Solution
-  Excess Inventory Management