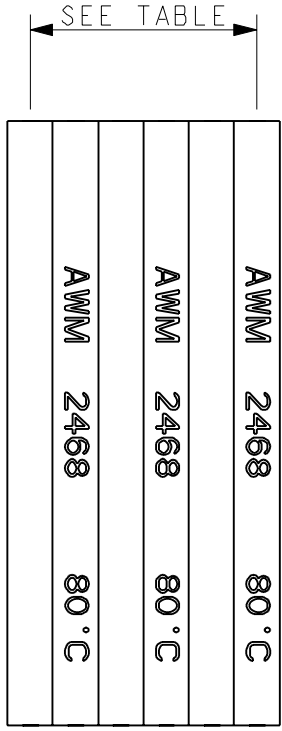




**THE DATASHEET OF**  
**902220736003000**

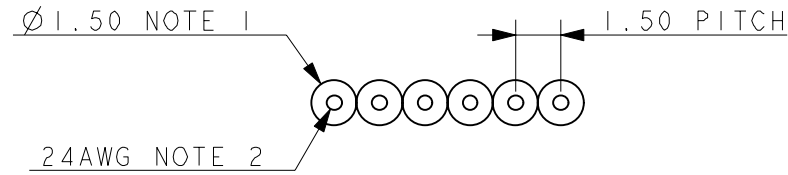


ELCO EUROPE (A DIVISION OF AVX LTD.) CONFIDENTIAL PROPRIETARY  
 THE DRAWING ON THIS PRINT AND INFORMATION THEREWITH ARE  
 PROPRIETARY TO ELCO EUROPE (A DIVISION OF AVX LTD.) AND  
 SHALL NOT BE USED OR DISCUSSED IN WHOLE OR IN PART  
 WITHOUT ELCO EUROPE'S WRITTEN CONSENT.



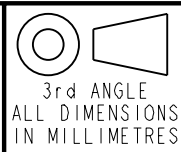
- NOTES :-
1. INSULATION :- WHITE PVC, FLAME RETARDENT VW-1.
  2. CONDUCTION :- 24AWG, TINNED COPPER, 11 STRANDS 0.16mmØ.
  3. NUMBER OF WAYS, SEE TABLE.
  4. MAXIMUM OPERATING TEMPERATURE 80°C.
  5. VOLTAGE RATING 300v.
  6. WIRE TO BE UL2468.
  7. UL MARKING ON ALTERNATE WIRES.
  8. SUPPLIED ON REELS, 305m PER REEL

PART NUMBER	NUMBER OF WAYS
90-2220-7360-02-000	2
90-2220-7360-03-000	3
90-2220-7360-04-000	4
90-2220-7360-05-000	5
90-2220-7360-06-000	6



FORM-106-01-056-1 ISS 7

Release No.  
 History  
 102838  
 25.07.2012  
 08.08.2012  
 28.08.2012



**ELCO**  
 © COPYRIGHT ELCO EUROPE  
 NOT TO BE DISCLOSED OR COPIED  
 WITHOUT WRITTEN PERMISSION

Drawn  
 N.C.H.  
 Size  
**AV**

Description  
 RIBBON CABLE - 24AWG  
 Part Number  
 90-2220-7360-0X-000S

DATE  
 25-Jul-12  
 Issue  
**C**

A

B

## Looking for pricing, stock, or lifecycle information?

Click below to explore more details on WIN SOURCE:

 [View 902220736003000 on WIN SOURCE](#)

 [AVX Corp/Kyocera Corp](#) Information

## Optimize Your Supply Chain with WIN SOURCE Solutions

-  Global Sourcing Solution
-  Obsolete Management
-  Cost Control Management
-  Shortage Management
-  Alternative Solution
-  Excess Inventory Management