



**THE DATASHEET OF
CST206-2A**



CST206-2A

Description:

Designed for switching power supply applications, Triad current sense transformers are used to detect the current passing through a conductor. These transformers are very reliable and operate over the frequency range of 20 kHz-200 kHz.

Electrical Specifications (@25C)

| ET VμSEC REF 20kHz | Turns Count | Min. Ind. mH | DCR Max. Ω | Pri. Amps |
|-----------------------|----------------|-----------------|------------|-----------|
| 4000 | 200 | 56.0 | 3.50 | 80.0 RMS |

Safety:

These current sense transformers are constructed of UL rated 130°C materials.

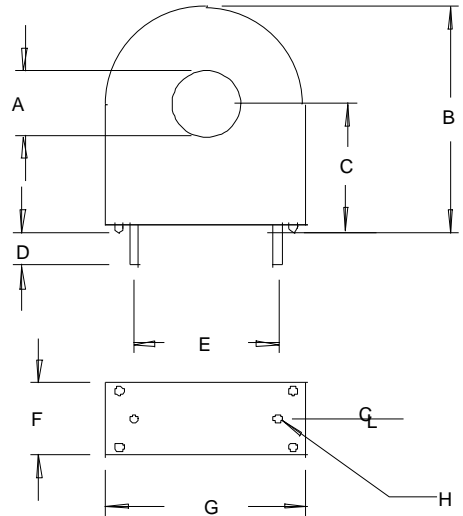
Dimensions:

| A Min | B Max | C Ref | D Ref | E Ref | F Max | G Max | H Dia. Pins |
|----------|----------|----------|----------|----------|----------|----------|----------------|
| .360 | 1.225 | .700 | .127 | .500 | .400 | 1.075 | .045 |

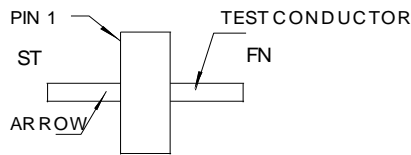
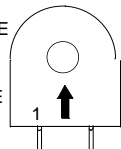
Units: In inches

Technical Notes:

1. Derate ET product by 32% for 50 kHz, 52% for 100 kHz and 50% for unidirectional operation.
2. Rated primary current renders approximately 40°C temp. rise.
3. Maximum recommended terminating resistance of 1 ohm per turn.
4. Primary is inserted through hole in casting.



1. START OF TEST CONDUCTOR TO HAVE THE SAME POLARITY AS PIN 1
2. DECAL ARROW ON CASE TO INDICATE POLARITY



POLARITY DETAIL TOP VIEW

RoHS Compliance: As of manufacturing date February 2016, all standard products meet the requirements of 2015/863/EU, known as the RoHS 3 initiative.

*Upon printing, this document is considered "uncontrolled". Please contact Triad Magnetics website for the most current version. For soldering and washing information please see <http://www.triadmagnetics.com/faq.html>

Looking for pricing, stock, or lifecycle information?

Click below to explore more details on WIN SOURCE:

 [View CST206-2A on WIN SOURCE](#)

 [Triad Magnetics Information](#)

Optimize Your Supply Chain with WIN SOURCE Solutions

-  Global Sourcing Solution
-  Obsolete Management
-  Cost Control Management
-  Shortage Management
-  Alternative Solution
-  Excess Inventory Management