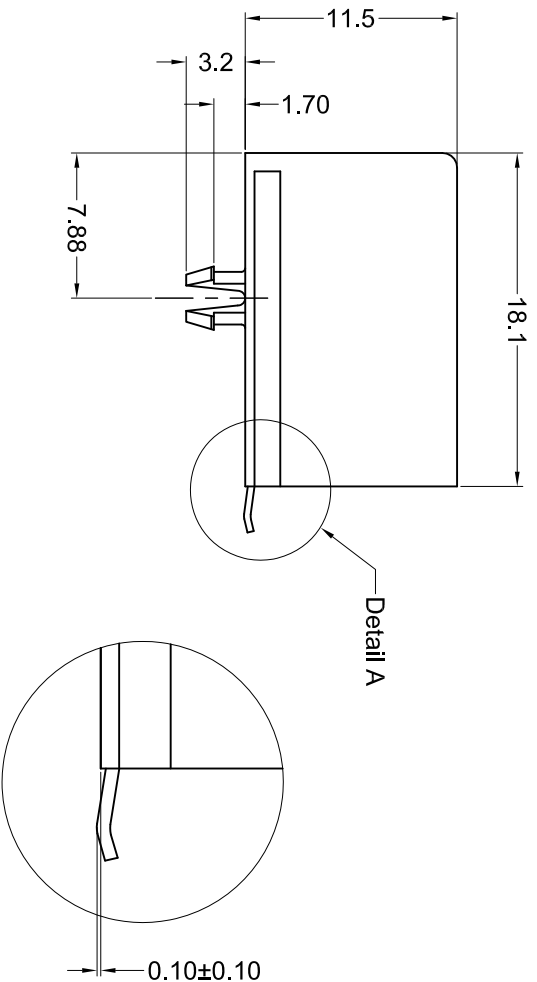




**THE DATASHEET OF
GMX-SMT2-N-44**

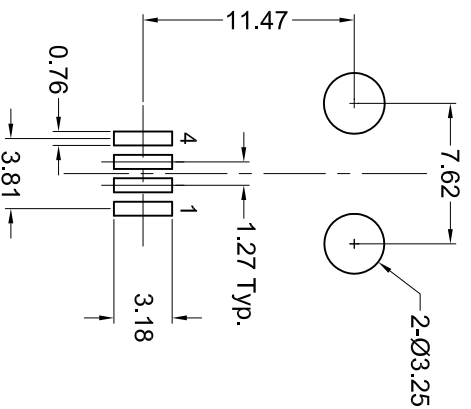




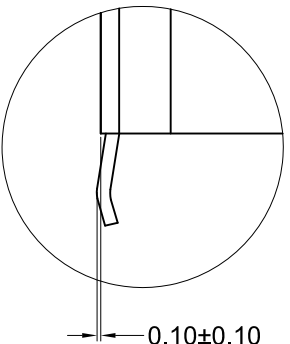
Materials and Finish

Housing Material:
 High Temp. Thermoplastic,
 (Reflow Process Compatible)
 UL 94V-0 Rated, Black Color
 Design meets UL 1863 Sec. 8
 Electrical Probe and Sec. 20
 Child Finger test requirements
 Contact Material: Phosphor Bronze
 Contact Plating Options:
 Standard: 0.0001" Nickel
 Plating, Selective Plating
 Gold Flash on Contact
 Area, Tin on Termination End
 50: 0.0001" Nickel Plating,
 Selective Plating 0.000050"
 Gold on Contact Area to
 Comply with FCC Requirements
 Under No. 47 C.F.R. Part 68,
 Subpart F, Tin on Termination End

Recommended PCB Layout (Top View)



DETAIL A

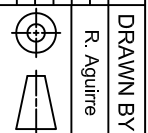


Electrical Characteristics

Current Rating: 1.0 Amps
 Current Voltage: 125V DC
 Insulation Resistance:
 500 Megohms min.
 Dielectric Withstanding Voltage:
 1000V rms, 60Hz
 Contact Resistance:
 20 milliohms max.
 Durability Rating:
 1000 mating cycles min.
 Operating Temperature:
 -40°C to +85°C

g	Packaging
	Bulk
	Tape & Reel
	Tape & Reel
	Bulk

V. BY	CHK. BY
Vien	H. MA
Vien	H. MA
Vien	P. DalCanto
u. Gh	H. MA
Cook	H. MA
MA	C. Furumasu



DATE: 05/23/05
 UNITS: mm

GMX-SMT2-N-44

Right Angle Modular Jack, RoHS Compliant
 4 Position, 4 Contacts, Surface Mount

ROHS COMPLIANT




Tolerances
 X.X ± 0.38
 X.XX ± 0.25
 Unless Stated
 Otherwise



Looking for pricing, stock, or lifecycle information?

Click below to explore more details on WIN SOURCE:

 [View GMX-SMT2-N-44 on WIN SOURCE](#)

 [Kycon, Inc. Information](#)

Optimize Your Supply Chain with WIN SOURCE Solutions

-  Global Sourcing Solution
-  Obsolete Management
-  Cost Control Management
-  Shortage Management
-  Alternative Solution
-  Excess Inventory Management