

ACKSHELL _____

****NOTE: 3.0 IN/LBS IS
RECOMMENDED TORQUE VALUE
FOR HOUSING SCREWS/NUTS****

S
Ø0.354 [9.0]
SCREW

971-YYY-010R011

SERIES _____

POSITIONS _____

009 _____

015 _____

025 _____

037 _____

MATERIAL _____

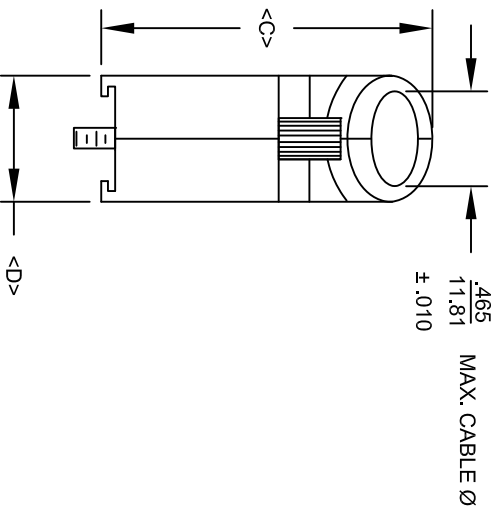
010 = PLASTIC

COLOR: _____

01 = BLACK

PUT-UPS _____

1 = KIT



| DIMENSIONS(mm/in) *tolerances are in mm | | | | |
|---|--------------------------------------|--|--------------------------------------|---------------------------------------|
| SIZE | A ^{+1.70} _{A,0.50} | B ^{+0.25} _{B,-0.010} | C ^{+2.40} _{C,0.50} | D ^{+0.85} _{D,-0.30} |
| 9 | 31.00 | 24.99 | 36.30 | 15.00 |
| | 1.220 | 0.984 | 1.429 | 0.591 |
| 15 | 39.50 | 33.32 | 40.30 | 15.00 |
| | 1.555 | 1.312 | 1.587 | 0.591 |
| 25 | 53.20 | 47.04 | 40.30 | 15.00 |
| | 2.094 | 1.852 | 1.587 | 0.591 |
| 37 | 69.70 | 63.50 | 40.30 | 15.00 |
| | 2.744 | 2.500 | 1.587 | 0.591 |

NC

THESE DRAWINGS AND SPECIFICATIONS ARE THE PROPERTY OF NorComp AND SHALL NOT BE REPRODUCED, COPIED OR USED AS THE BASIS FOR THE MANUFACTURE OR SALE OF APPARATUS WITHOUT WRITTEN PERMISSION.

DRAWN: PAM JENKINS DATE: 6-10-05

SCALE: NTS SHEET 1 OF 1 REV 10

NorComp

DWG NO. 971-YYY-010R011

94-HB

B

Looking for pricing, stock, or lifecycle information?

Click below to explore more details on WIN SOURCE:

 [View 971-015-010R011 on WIN SOURCE](#)

 [NorComp Inc. Information](#)

Optimize Your Supply Chain with WIN SOURCE Solutions

-  Global Sourcing Solution
-  Obsolete Management
-  Cost Control Management
-  Shortage Management
-  Alternative Solution
-  Excess Inventory Management