



**THE DATASHEET OF
684S7W2103L461**





SEAL-D®

Designed for IP Performance

SEAL-D® I/O Connectors utilize a proprietary sealing technology which maintains the same physical size and footprint as standard D-Sub products. This reduces space on new designs & eliminates the need to redesign enclosures and PC boards when implementing IP66/IP67 design upgrades.

FEATURES & BENEFITS

- **D-Subs Available in 6 industry standard sizes:**
(Standard: 9, 15, 25 | High Density: 15, 26, 44)
- **Now Available - POWER-D Connectors**
(5 industry standard sizes: 3W3, 5W5, 7W2, 9W4, 13W3)
- **Solder Cup, Vertical Mount, & Right Angle Board Mount Options**
- **Screw Machined Contacts for High Mating Cycles**
- **100% IP Compliant Guaranteed | Made in U.S.A.**



[http:// www.norcomp.net](http://www.norcomp.net)

NORCOMP



SEAL-D®

Innovative IP Performance

STANDARD IP67

Cable Mount
Vertical PCB
Right Angle (0.283" Footprint)
Right Angle (0.370" Footprint)

SERIES

772-EYY-Y03RYY1
772-EYY-Y13RYY1
773-EYY-Y13RYY1
774-EYY-Y13RYY1

SIZE

9 / 15 / 25 Position
9 / 15 / 25 Position
9 / 15 / 25 Position
9 / 15 / 25 Position

HIGH DENSITY IP67

Cable Mount
Vertical PCB
Right Angle

SERIES

780-MYY-Y03LYY1
780-MYY-Y13RYY1
781-MYY-113RYY1

SIZE

15 / 26 / 44 Position
15 / 26 / 44 Position
15 / 26 / 44 Position

NEW

POWER-D IP67

Cable Mount
Vertical PCB
Right Angle

SERIES

680SYWYY03LY01
681SYWYY03L001
684SYWY103L461

SIZE

3W3 / 5W1 / 5W5 / 7W2
9W4 / 11W1 / 13W3 / 13W6
17W2 / 21W1 / 21WA4

STANDARD IP66

Cable Mount
Vertical PCB
Right Angle (0.318" Footprint)
Right Angle (0.590" Footprint)

SERIES

671-YYY-103LYY1
671-YYY-113RYY1
682-YYY-113RYY1
683-YYY-113RYY1

SIZE

9 / 15 / 25 Position
9 / 15 / 25 Position
9 / 15 / 25 Position
9 / 15 / 25 Position

HIGH DENSITY IP66

Cable Mount
Vertical PCB
Vertical PCB (Low Profile)
Right Angle

SERIES

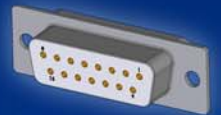
680-YYY-103LYY1
680-YYY-113RYY1
695-YYY-113LYY1
681-YYY-113RYY1

SIZE

15 / 26 / 44 Position
15 / 26 / 44 Position
15 / 26 / 44 Position
15 / 26 / 44 Position



SEAL-D®



For More Information

www.norcomp.net
800-849-4450

NORCOMP



Looking for pricing, stock, or lifecycle information?

Click below to explore more details on WIN SOURCE:

 [View 684S7W2103L461 on WIN SOURCE](#)

 [NorComp Inc. Information](#)

Optimize Your Supply Chain with WIN SOURCE Solutions

-  Global Sourcing Solution
-  Obsolete Management
-  Cost Control Management
-  Shortage Management
-  Alternative Solution
-  Excess Inventory Management