



**THE DATASHEET OF
CST-1030**



CST-1030

Description:

Triad current sense transformers are used to detect the current passing through a conductor. These transformers are very reliable and operate efficiently at 50/60 Hz.

Electrical Specifications (@25C)

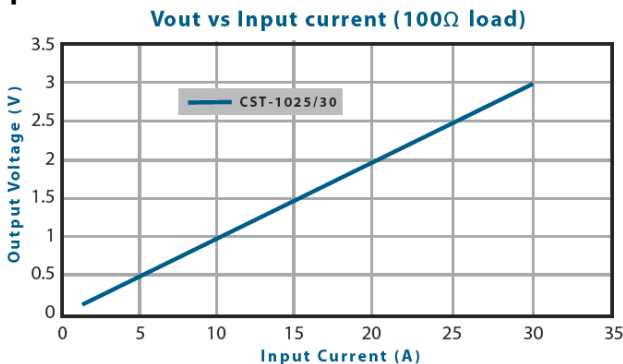
IP Amps	Turns Ratio ±3 Turns	Terminating Resistor		DCR (Ω) Nominal	Vmax (rms)		Net Weight Grams
					10V @ 50Hz	12V @ 60Hz	
30	1000:1	100Ω	.09W	46	10V @ 50Hz	12V @ 60Hz	30

Dimensions:

A	B	C	D	E	F	G
30.20	30.20	14.30	20.32	10.16	11.40	10.16

Units: In mm

Response Curve:



Technical Notes:

1. Pin3 for mechanical support only.
2. Pin diameter: 0.8±0.1 mm.
3. Pin length: 5±1mm.
4. $V_L = V_{max} - \left(\frac{I_s \times DCR}{Turns\ Ratio}\right)$, $I_s = \frac{I_p}{Turns\ Ratio}$
5. Primary to secondary isolation: 4000VAC, 60Hz
6. Operating Temperature: -10°C to +65°C
7. Storage Temperature: -25~85°C
8. Accuracy Class: 5% from 3Arms - 30Arms w/ 100Ω burden.
9. Burden value can be reduced to increase current capability up to 100A. Adjust burden value inversely proportional to input current.

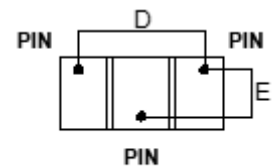
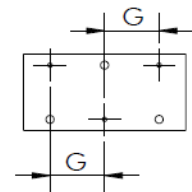
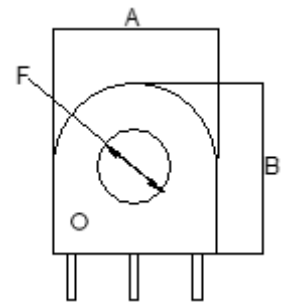
Agency Files:

UL file E205349 – Component, Instrument Transformer (XODW2)

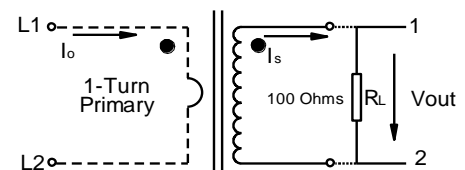


RoHS Compliance: As of manufacturing date February 2016, all standard products meet the requirements of 2015/863/EU, known as the RoHS 3 initiative.

*Upon printing, this document is considered "uncontrolled". Please contact Triad Magnetics website for the most current version. For soldering and washing information please see <http://www.triadmagnetics.com/faq.html>



BOTTOM VIEW



Looking for pricing, stock, or lifecycle information?

Click below to explore more details on WIN SOURCE:

 [View CST-1030 on WIN SOURCE](#)

 [Triad Magnetics Information](#)

Optimize Your Supply Chain with WIN SOURCE Solutions

-  Global Sourcing Solution
-  Obsolete Management
-  Cost Control Management
-  Shortage Management
-  Alternative Solution
-  Excess Inventory Management