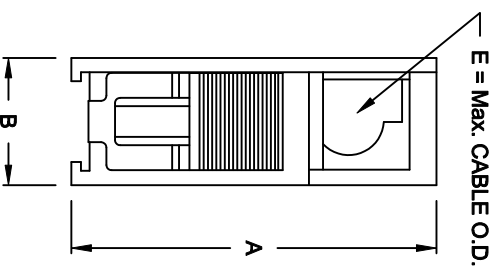
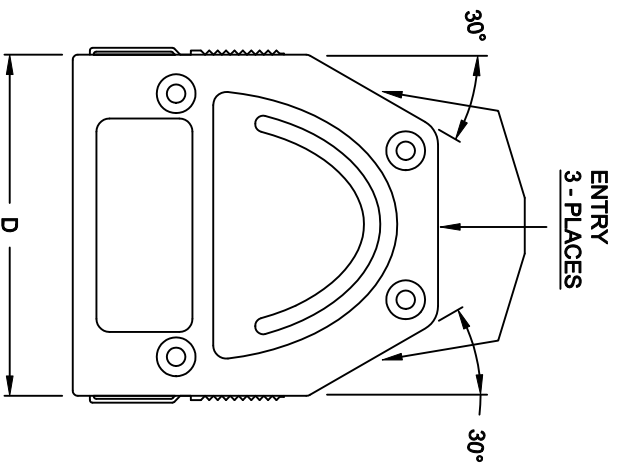
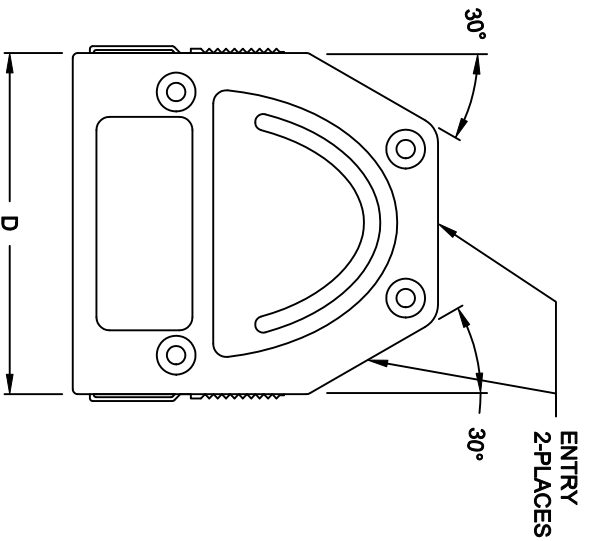




**THE DATASHEET OF**  
**955-009-020R121**



RY  
ACES  
& METALIZED PLASTIC



25 POSITION

37 POSITION

955-YYY-YYRY1

ASTIC; SICOFLEX, UL 94 V-0  
OVER COPPER PLATING  
+125°C

T INCLUDES:



SERIES \_\_\_\_\_  
POSITIONS \_\_\_\_\_  
009 \_\_\_\_\_  
015 \_\_\_\_\_  
025 \_\_\_\_\_  
037 \_\_\_\_\_  
MATERIAL \_\_\_\_\_  
010 = PLASTIC  
020 = METALIZED PLASTIC  
ROHS COMPLIANT \_\_\_\_\_  
R = HIGH TEMP. PROCESS  
COLOR \_\_\_\_\_  
01 = BLACK  
12 = METAL(IZED)  
PUT-UP \_\_\_\_\_  
1 = KIT

IONS (IN.)

C	D	E
0.984	1.299	0.364
1.312	1.626	0.394
1.852	2.165	0.433
2.500	2.815	0.433

DO NOT SCALE FROM DRAWING

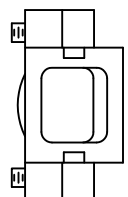
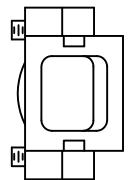
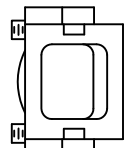
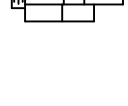
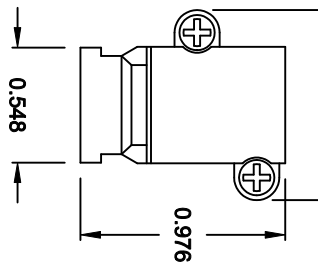
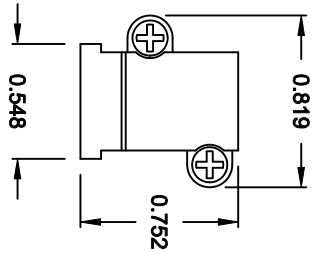
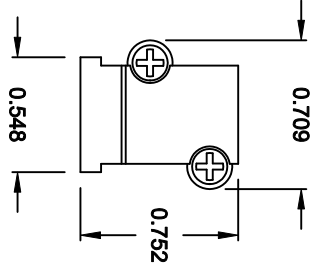
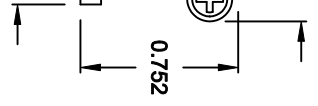
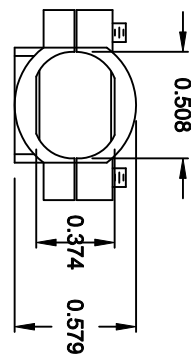
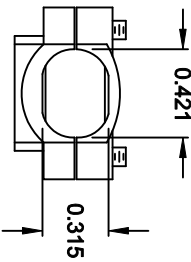
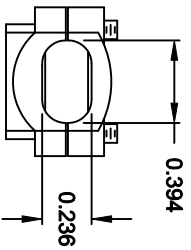
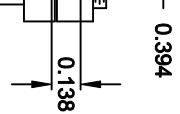
THESE DRAWINGS AND SPECIFICATIONS ARE THE PROPERTY OF NorComp AND SHALL NOT BE REPRODUCED, COPIED OR USED AS THE BASIS FOR THE MANUFACTURE OF SALE OF APPARATUS WITHOUT WRITTEN PERMISSION.

DRAWN: DATE: 04-10-07  
C. SMITH  
CHECKED: DATE:  
SCALE: 1:1 SHEET 1 OF 2 REV 3  
DWG NO. 955-YYY-YYRY1

NorComp

MP LIANT

# CABLE CLAMPS ORDERED SEPARATELY



R-4-7  
57 - 0.276

P/N 955-15-SR-7-10  
CABLE RANGE = 0.276 - 0.394

P/N 955-25-SR-9-12  
CABLE RANGE = 0.354 - 0.472

P/N 955-37-SR-11-14  
CABLE RANGE = 0.433 - 0.551

**DO NOT SCALE FROM DRAWING**

**NC**  
THESE DRAWINGS AND SPECIFICATIONS ARE THE PROPERTY OF NorComp AND SHALL NOT BE REPRODUCED, COPIED OR USED AS THE BASIS FOR THE MANUFACTURE OF SALE OF APPARATUS WITHOUT WRITTEN PERMISSION.

DRAWN: **C. SMITH** DATE: **04-10-07**  
CHECKED: DATE:

SCALE: 1:1 SHEET 2 OF 2 REV 3

## Looking for pricing, stock, or lifecycle information?

Click below to explore more details on WIN SOURCE:

 [View 955-009-020R121 on WIN SOURCE](#)

 [NorComp Inc. Information](#)

## Optimize Your Supply Chain with WIN SOURCE Solutions

-  Global Sourcing Solution
-  Obsolete Management
-  Cost Control Management
-  Shortage Management
-  Alternative Solution
-  Excess Inventory Management