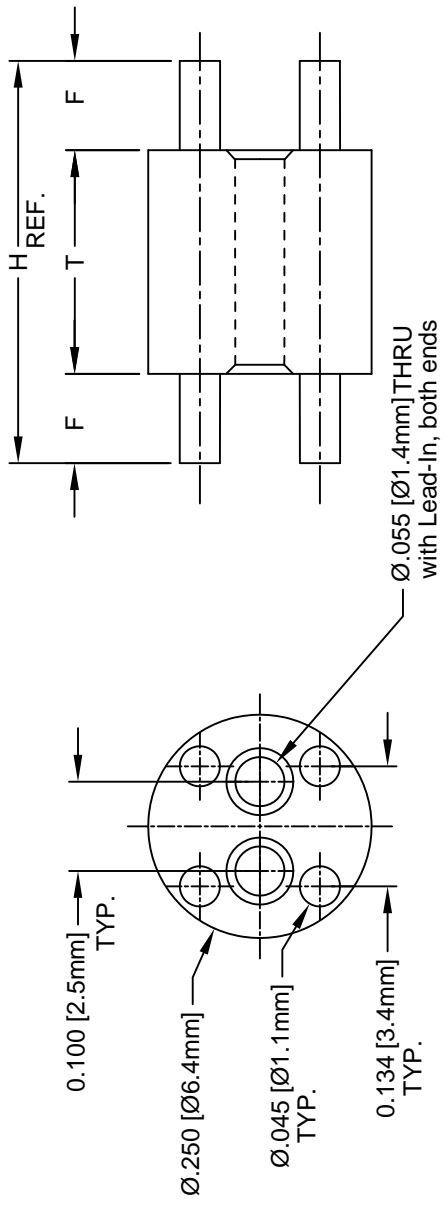




THE DATASHEET OF
450-200



REV.	E	Engineering Update
	F	Removed Material C



457 SE

PART	
457-51	
457-53	
457-55	
457-57	
457-59	
457-61	
457-63	
457-67	
457-69	

458 SE

PART	
458-70	
458-72	
458-74	
458-76	
458-78	
458-80	
458-82	
458-84	
458-86	
458-88	

459 SE

PART	
459-90	
459-92	
459-94	
459-96	
459-98	
459-100	
459-102	
459-104	
459-106	
459-108	
459-110	

450 SERIES

PART NO	H	T	F
450-050	.050 (1.3)		.010 (.25)
450-060	.060 (1.5)		.015 (.38)
450-070	.070 (1.8)		.020 (.51)
450-080	.080 (2.0)		.025 (.64)
450-090	.090 (2.3)		.030 (.76)
450-100	.100 (2.5)		.035 (.89)
450-110	.110 (2.8)		.040 (1.0)
450-120	.120 (3.0)		.045 (1.1)
450-130	.130 (3.3)	.030(.76)	.050 (1.3)
450-140	.140 (3.6)		.055 (1.4)
450-150	.150 (3.8)		.060 (1.5)
450-160	.160 (4.1)		.065 (1.7)
450-170	.170 (4.3)		.070 (1.8)
450-180	.180 (4.6)		.075 (1.9)
450-190	.190 (4.8)		.080 (2.0)
450-200	.200 (5.1)		.085 (2.2)

455 SERIES

PART NO	H	T	F
455-200	.200 (5.1)		.025 (.64)
455-210	.210 (5.3)		.030 (.76)
455-220	.220 (5.6)		.035 (.89)
455-230	.230 (5.8)		.040 (1.0)
455-240	.240 (6.1)		.045 (1.1)
455-250	.250 (6.4)		.050 (1.3)
455-260	.260 (6.6)		.055 (1.4)
455-270	.270 (6.9)		.060 (1.5)
455-280	.280 (7.1)	.150(3.8)	.065 (1.7)
455-290	.290 (7.4)		.070 (1.8)
455-300	.300 (7.6)		.075 (1.9)
455-310	.310 (7.9)		.080 (2.0)
455-320	.320 (8.1)		.085 (2.2)
455-330	.330 (8.4)		.090 (2.3)
455-340	.340 (8.6)		.095 (2.4)
455-350	.350 (8.9)		.100 (2.5)

456 SERIES

PART NO	H	T	F
456-350	.350 (8.9)		.025 (.64)
456-360	.360 (9.1)		.030 (.76)
456-370	.370 (9.4)		.035 (.89)
456-380	.380 (9.7)		.040 (1.0)
456-390	.390 (9.9)		.045 (1.1)
456-400	.400 (10.2)		.050 (1.3)
456-410	.410 (10.4)		.055 (1.4)
456-420	.420 (10.7)		.060 (1.5)
456-430	.430 (10.9)	.300(7.6)	.065 (1.7)
456-440	.440 (11.2)		.070 (1.8)
456-450	.450 (11.4)		.075 (1.9)
456-460	.460 (11.7)		.080 (2.0)
456-470	.470 (11.9)		.085 (2.2)
456-480	.480 (12.2)		.090 (2.3)
456-490	.490 (12.4)		.095 (2.4)
456-500	.500 (12.7)		.100 (2.5)

- MATERIAL: NYLON 6/6, 94V-2, WHITE.
- GENERAL SPECIFICATIONS: BIVAR MOLDED COMPONENT SPECIFICATION BV00-E101.


STANDARD TOLERAN
(UNLESS OTHERWISE SPECI
ANGU
X°
X ±.1
.XX ±.01
.XXX ±.005

DESIGNED: **M. Chen**
DATE: **02/2/20**

CHECKED: **D. Green**
DATE: **02/2/20**

Looking for pricing, stock, or lifecycle information?

Click below to explore more details on WIN SOURCE:

 [View 450-200 on WIN SOURCE](#)

 [Bivar Inc. Information](#)

Optimize Your Supply Chain with WIN SOURCE Solutions

-  Global Sourcing Solution
-  Obsolete Management
-  Cost Control Management
-  Shortage Management
-  Alternative Solution
-  Excess Inventory Management