



**THE DATASHEET OF  
LPA-C041301S-7.5**

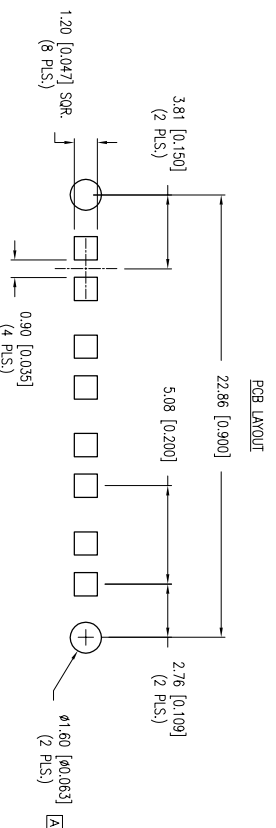
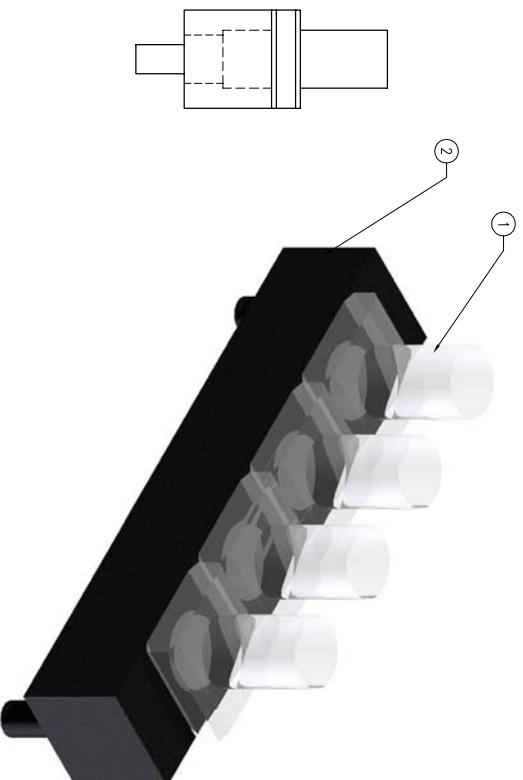
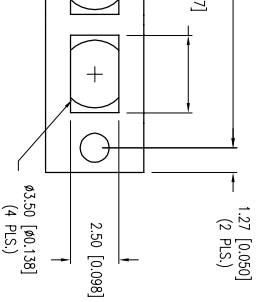
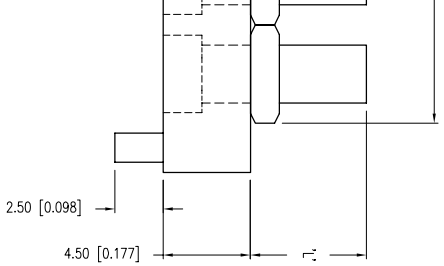
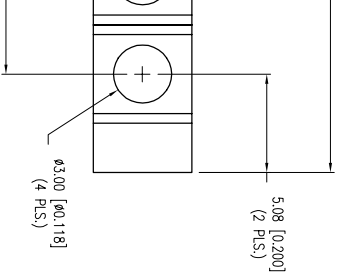


PART NUMBER	LPA-C041301S-X	REV.	A
DATE	10.06.06	REV.	A
E.C.N. NUMBER AND REVISION COMMENTS	E.C.N. #11355.		

DIM T	SURF	TOL
3mm	-Z	-0.1
4mm	-Z	-0.1
7.5mm	-Z	-0.1
10mm	-Z	-0.1
15mm	-Z	-0.1
20mm	-Z	-0.1
25mm	-Z	-0.1
30mm	-Z	-0.1
40mm	-Z	-0.1
50mm	-Z	-0.1
CUSTOM	YOUR LENGTH	

NOTES:

1. MATERIAL: CLEAR POLYCARBONATE, UL94V-0 (LIGHT PIPE)
2. MATERIAL: BLACK NITRILE, UL 94V-0, (HOLDER)
3. DIMENSIONS ARE IN MILLIMETERS UNLESS OTHERWISE SPECIFIED.
4. RECOMMENDED LED: SML-L10805xx SERIES.



HELEN ROAD  
E, IL 60067-6976  
+1.847.359.2790  
WWW.LUMEX.COM

3mm, QUAD UNIT, VERTICAL SMT LIGHT PIPE.

\*\*THE SPECIFICATIONS MAY CHANGE AT ANY TIME WITHOUT NOTICE DUE TO NEW MATERIALS OR PRODUCT IMPROVEMENT\*\*

CONFIDENTIAL INFORMATION  
THE INFORMATION CONTAINED IN THIS DOCUMENT IS THE PROPERTY OF LUMEX INC. EXCEPT AS SPECIFICALLY AUTHORIZED IN WRITING BY LUMEX INC., THE HOLDER OF THIS DOCUMENT SHALL KEEP ALL INFORMATION CONTAINED HEREIN CONFIDENTIAL AND SHALL PROTECT SAME IN WHOLE OR IN PART FROM DISCLOSURE AND DISSEMINATION TO ALL THIRD PARTIES.



DATE:	04.27.11	DRAWN BY:	AB
PAGE:	1 OF 1	CHKD BY:	BC
SCALE:	NTS	APRVD BY:	BC
UNIT:	mm [INCH]		

UNCONTROLLED DOCUMENT



## Looking for pricing, stock, or lifecycle information?

Click below to explore more details on WIN SOURCE:

-  [View LPA-C041301S-7.5 on WIN SOURCE](#)
-  [Lumex Opto/Components Inc. Information](#)

## Optimize Your Supply Chain with WIN SOURCE Solutions

-  Global Sourcing Solution
-  Obsolete Management
-  Cost Control Management
-  Shortage Management
-  Alternative Solution
-  Excess Inventory Management