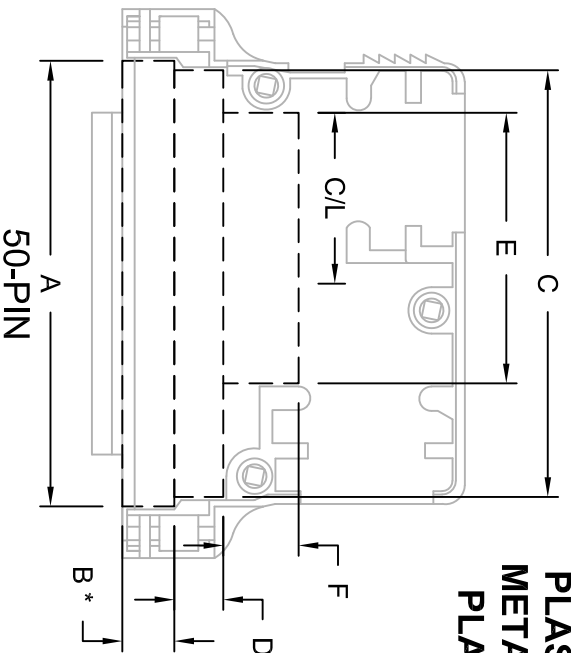
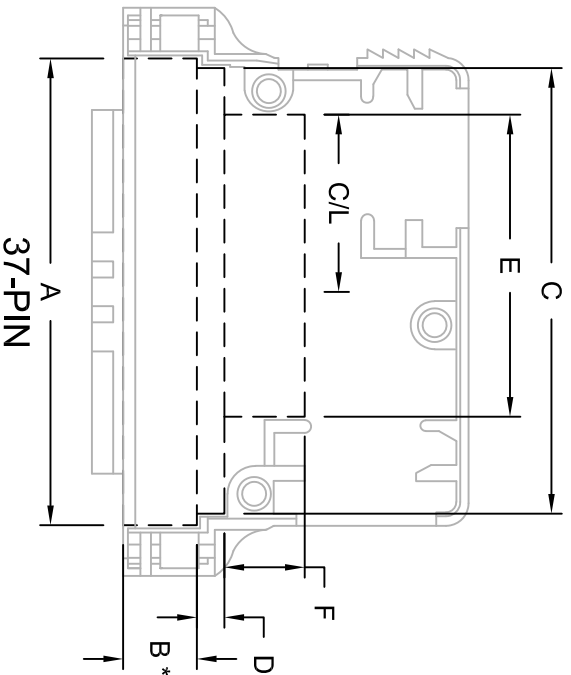
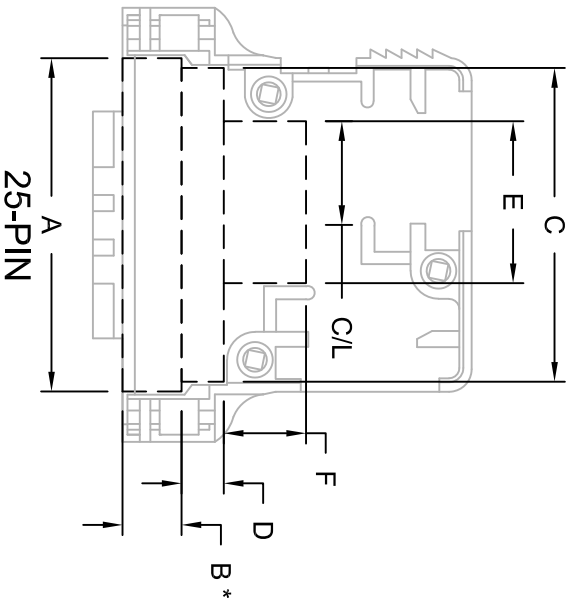




THE DATASHEET OF
982-037-020R121



PLASTIC & METALIZED PLASTIC



**PLASTIC &
METALIZED
PLASTIC**

	DIMENSIONS (IN.)				
	9	15	25	37	50
A	0.737	1.069	1.604	2.160	2.166
B *	0.364	0.364	0.237	0.367	0.367
C	0.644	0.987	1.515	2.066	2.071
D	0.190	0.184	0.235	0.119	0.119
E			0.782	1.290	1.295
F			0.353	0.319	0.324
C/L			0.500	0.855	0.824
PCB	0.436	0.436	0.421	0.552	0.552

SEE NOTE 1.

NOTE:

1. "B" DIMENSION MEASURED FROM BACK SIDE OF CONNECTOR FLANGE
2. MIN. SAFE SPACING BETWEEN BACK SHELLS FOR PCB AND MOUNTED COMPONENTS
3. THESE DIMENSIONS ARE GOOD FOR THE PLASTIC AND METALIZED PLASTIC BACK SHELLS

NC
THESE DRAWINGS AND SPECIFICATIONS ARE THE PROPERTY OF NorComp AND SHALL NOT BE REPRODUCED, COPIED OR USED AS THE BASIS FOR THE MANUFACTURE OF SALE OF APPARATUS WITHOUT WRITTEN PERMISSION.

DRAWN: C. SMITH
DATE: 07-12-06

SCALE: N.T.S.
SHEET 1 OF 1
REV 2

NorComp

DWG NO. ID - 982 SERIES

IMPLIANT

Looking for pricing, stock, or lifecycle information?

Click below to explore more details on WIN SOURCE:

 [View 982-037-020R121 on WIN SOURCE](#)

 [NorComp Inc. Information](#)

Optimize Your Supply Chain with WIN SOURCE Solutions

-  Global Sourcing Solution
-  Obsolete Management
-  Cost Control Management
-  Shortage Management
-  Alternative Solution
-  Excess Inventory Management