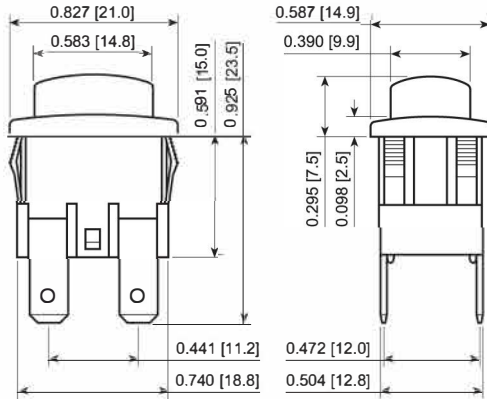


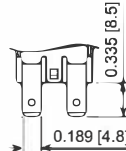


**THE DATASHEET OF
PA412C1000-136**

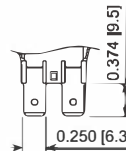




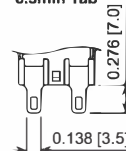
Terminal Options



4.8mm Tab

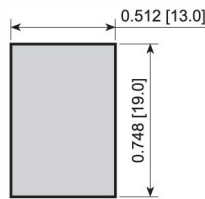


6.3mm Tab



Solder

Mounting Options



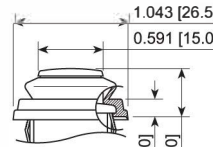
Panel Cutout

Illumination Options



Full

Water Protection Options



Rubber Cap

FEATURES:

- Durable, Robust and Economical
- Popular 13mm x 19mm Cutout
- High Power Ratings
- Standard and Water-resistant Versions
- Illuminated Versions

SPECIFICATIONS:

RATING: RATING OPTION C:
16A 125/250VAC [UR, cUR]

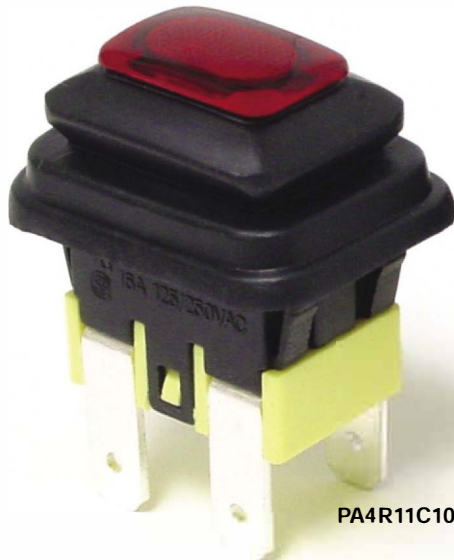
TEMPERATURE: -20°C to 65°C [UR, cUR]

ELECTRICAL LIFE: 6,000 Cycles [UR, cUR]
CONTACT RESISTANCE: 20mΩ Min. at 1A 5VDC
INSULATION RESISTANCE: 100MΩ Min. at 500VDC
DIELECTRIC STRENGTH: 1,000VAC for 1 Minute

PUSHBUTTON



PA421C4000-124



PA4R11C1000-116



PA411C1100



PA411C1900

SPECIFICATIONS SUBJECT TO CHANGE WITHOUT NOTICE 12.1.2025

Series	Terminal	Function	Rating	Body Color	Actuator Color	Marking Color	Marking Type	Lens Style	Lens Color	Lamp Voltage
PA4 - Std. Version	1 - 4.8mm Tab	1 Pole:	C - 16A 125/250VAC	1 - Black	0 - Full Illum.	0 - None	0 - None	1 - Full	0 - Clear	3 - 6V
PA4R - Rubber Cap	2 - Solder	1 - Off-On		2 - White	1 - Black	1 - Black	1 - Power Symbol Vert.	1 - Red	1 - Red	4 - 12V
	6 - 6.3mm Tab	4 - Off-(On)		4 - Grey	2 - White	2 - White	2 - Power Symbol Horz.	2 - Amber	5 - 24V	5 - 24V
		2 Pole:		5 - Orange	4 - Grey	8 - Red	3 - Reset Symbol Vert.	3 - Green	6 - 125V	6 - 125V
		2 - Off-On		7 - Blue	5 - Orange		4 - Reset Symbol Horz.	4 - Blue	7 - 250V	7 - 250V
		E-Off-(On)		8 - Green	7 - Blue		5 - POWER Vert.	5 - Yellow		
				9 - Red	8 - Green		6 - POWER Horz.			
					9 - Red		7 - RESET Vert.			
							8 - RESET Horz.			

Custom Colors and Markings Available Upon Request For Illuminated Switches Only

EXAMPLE PART NUMBERS:

PA411C1100 1P Off-On
Black Body/Actuator, 4.8mm Tab

PA414C1100 1P Off-(On)
Black Body/Actuator, 4.8mm Tab

PA412C1100-116 2P Off-On
Black Body, Red Actuator, 125V, 4.8mm Tab

PA421C1100 1P Off-On
Black Body/Actuator, Solder Tab



Looking for pricing, stock, or lifecycle information?

Click below to explore more details on WIN SOURCE:

 [View PA412C1000-136](#) on WIN SOURCE

 [E-SWITCH](#) Information

Optimize Your Supply Chain with WIN SOURCE Solutions

-  Global Sourcing Solution
-  Obsolete Management
-  Cost Control Management
-  Shortage Management
-  Alternative Solution
-  Excess Inventory Management