

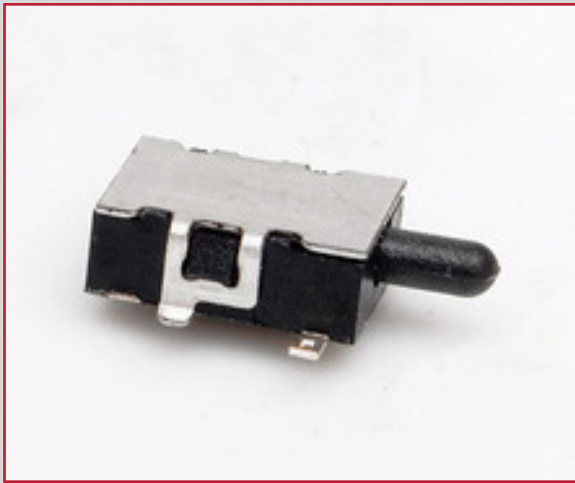


THE DATASHEET OF
900AGQ

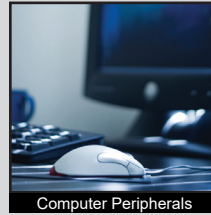


900 SERIES DETECTOR SWITCH

ANTI-VANDAL SWITCHES
 DETECTOR SWITCHES
 DIP SWITCHES
 KEYLOCK SWITCHES
 NAVIGATION SWITCHES
 PUSHBUTTON SWITCHES
 ROCKER SWITCHES
 ROTARY SWITCHES
 SLIDE SWITCHES
 SNAP ACTION SWITCHES
 TACTILE SWITCHES
 TOGGLE SWITCHES
 CAP OPTIONS



APPLICATIONS / MARKETS



RoHS

SPECIFICATIONS

Contact Rating: 100mA @ 50 VDC
Life Expectancy: 50,000 cycles typical
Contact Resistance: 80mΩ max. typical @ 2-4 VDC 100mA
Insulation Resistance: 100MΩ min.
Dielectric Strength: >1,000 Vrms at sea level
Actuation Force: 50 gf max.
Operating Temperature: -40°C to +105°C
Travel: 2.0mm

FEATURES & BENEFITS

- Right angle SMT detector switch
- Tape & reel packaging
- SPST-NO or SPST-NC; momentary

PART NUMBER CONFIGURATOR

Series



900

Mounting Boss



A - Without Bosses
 B - With Bosses

Circuit



G - Normally Open
 H - Normally Closed

Contact Material



Q - Silver

Specifications subject to change without notice 3.16.2026



E-SWITCH®

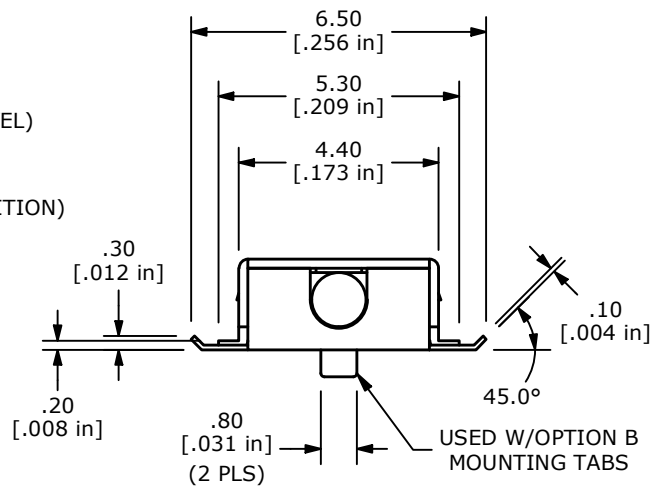
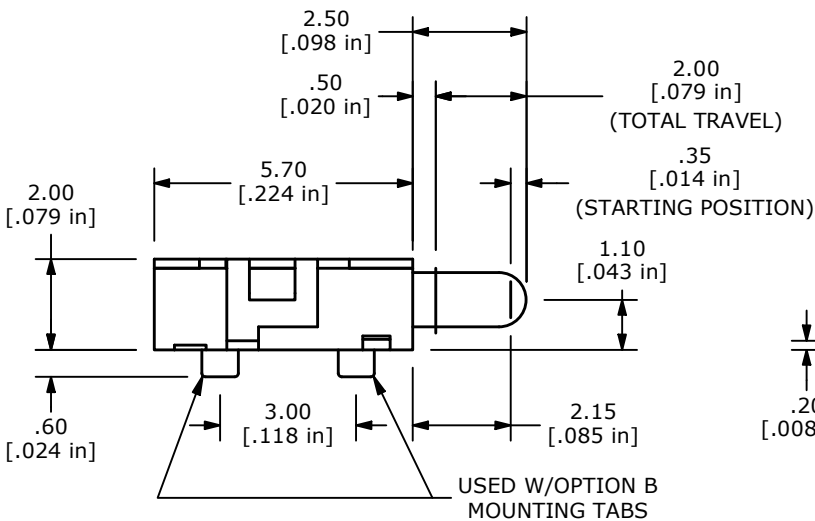
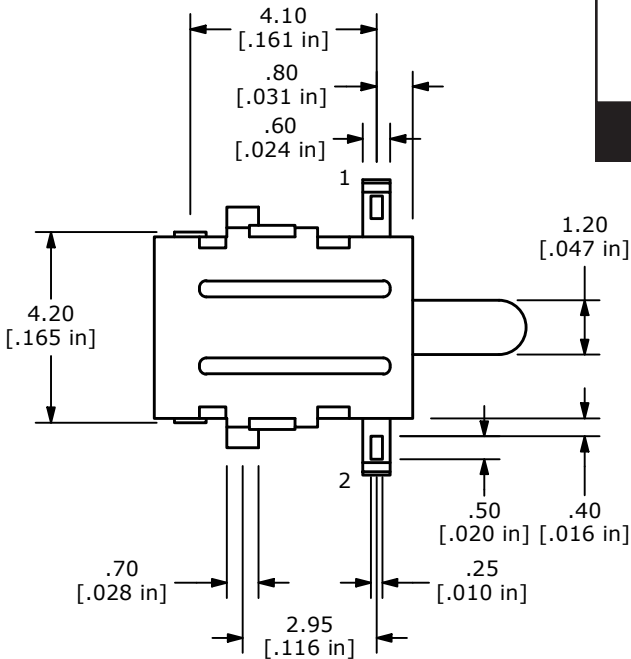
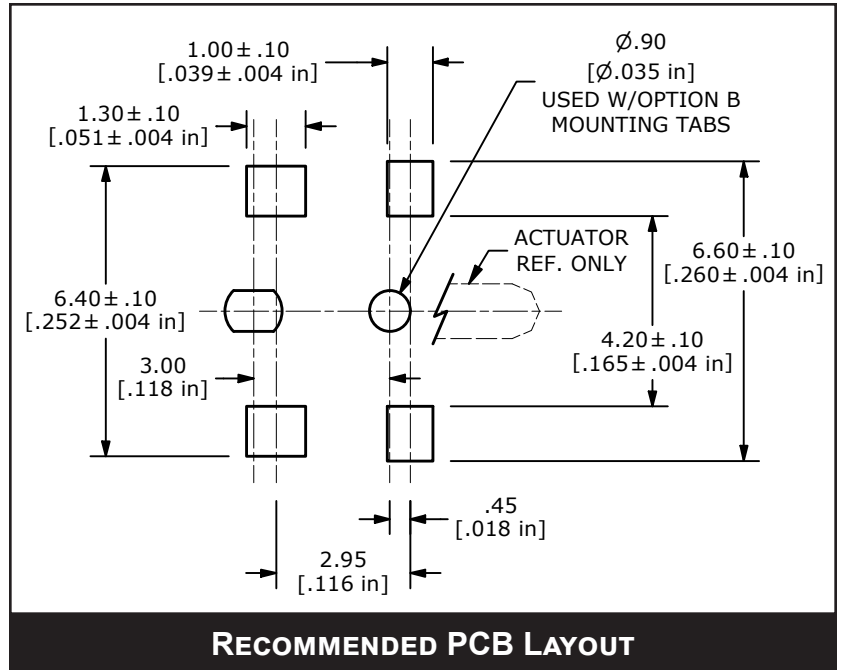
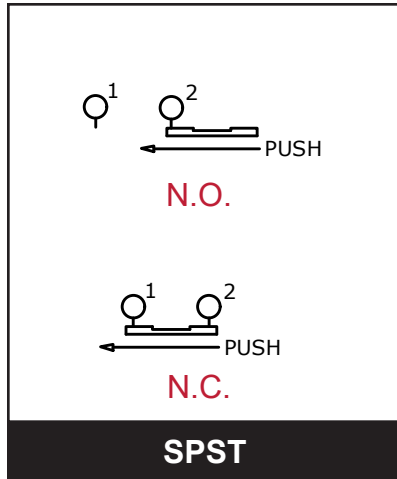
www.e-switch.com

800.867.2717

1

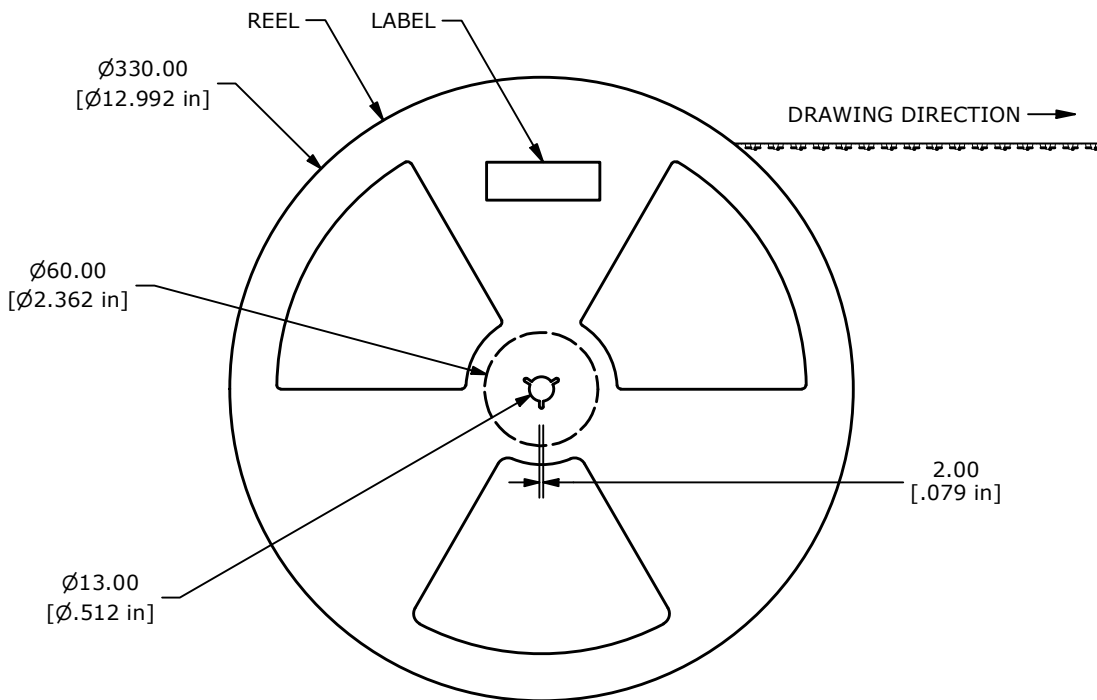
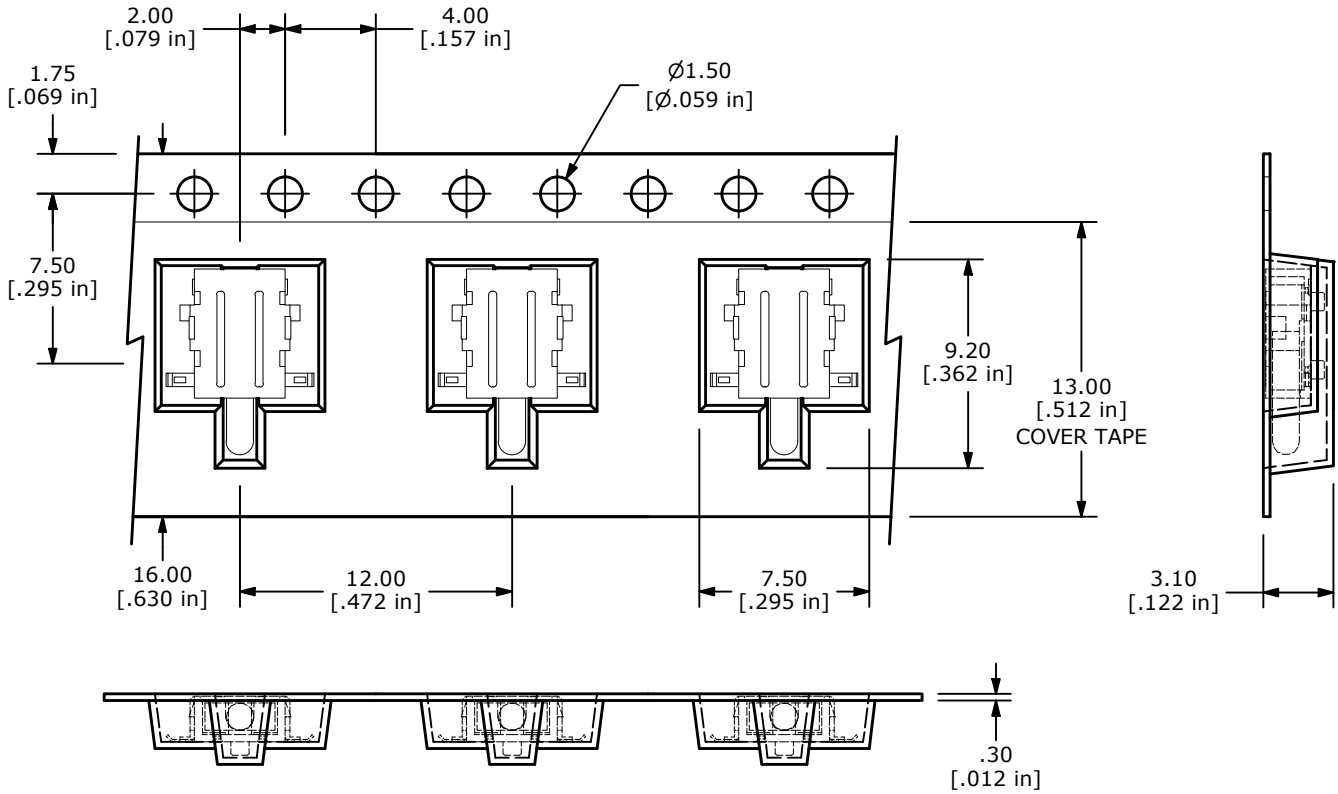
900 SERIES DETECTOR SWITCH

BODY DIMENSIONS



900 SERIES DETECTOR SWITCH

BODY DIMENSIONS TAPE AND REEL



900 SERIES DETECTOR SWITCH

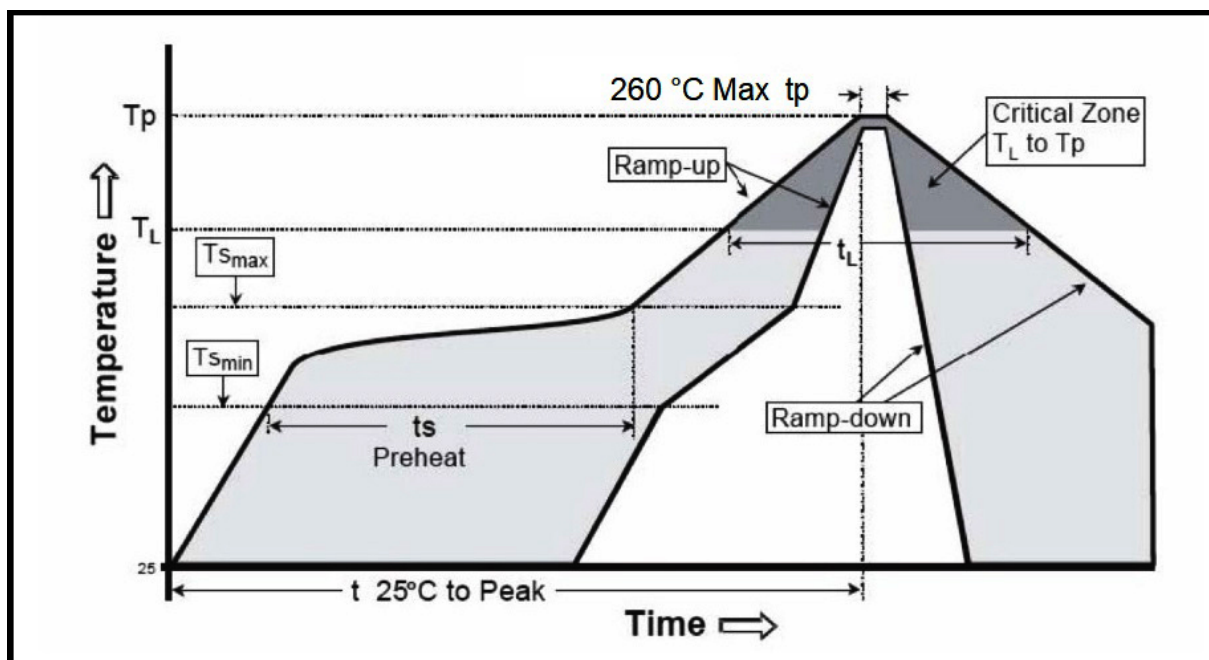
RECOMMENDED SOLDER PROCESS

Most contamination problems can be prevented by exercising care during the cleaning and soldering process. Care should be taken not to immerse or spray unsealed switches during flux removal. Contact E-Switch for specific soldering recommendations and specifications not shown. Generalized soldering procedures are outlined below.

“TYPICAL” SMT REFLOW (Pb and Pb-Free)

Profile Feature	Sn-Pb Eutectic Assembly	Pb-Free Assembly
Average Ramp-Up Rate (T _{smax} to T _p)	3 °C/second max.	3 °C/second max.
Preheat -Temperature Min (T _{smin}) -Temperature Max (T _{smax}) -Time (t _{smin} to t _{smax})	100 °C 150 °C 60-120 seconds	150 °C 200 °C 60-180 seconds
Time Maintained above: -Temperature (T _L) -Time (t _L)	183 °C 60-150 seconds	217 °C 60-150 seconds
Time within 5 °C of actual Peak Temperature (t _p)	10-30 seconds	20-40 seconds
Ramp-Down Rate	6 °C/second max.	6 °C/second max.
Time 25 °C to Peak Temperature	6 minutes max.	8 minutes max.

Note 1: All temperatures refer to topside of the package, measured on the package surface.



Looking for pricing, stock, or lifecycle information?

Click below to explore more details on WIN SOURCE:

 [View 900AGQ on WIN SOURCE](#)

 [E-SWITCH](#) Information

Optimize Your Supply Chain with WIN SOURCE Solutions

-  Global Sourcing Solution
-  Obsolete Management
-  Cost Control Management
-  Shortage Management
-  Alternative Solution
-  Excess Inventory Management