



THE DATASHEET OF
5217



SPRING & BUTTON CONTACTS

- Economical and reliable contacts are ideal for molded cases with self contained battery compartments
- "Solder tab" design for either wire lead or PC mounting
- Unique spring contacts adjust to variations in battery lengths
- Reliable spring contacts assure low contact resistance and a dependable connection
- Space saving, economical, excellent mechanical construction



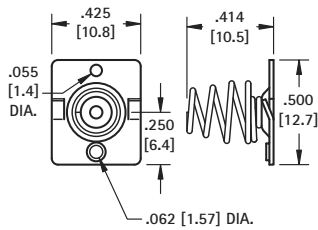
MATERIAL:

Plate: .020 (.51) Steel, Nickel Plate **Spring:** Spring Steel, Nickel Plate

Refer to page 37 for Battery Contact Layout & Mounting Details

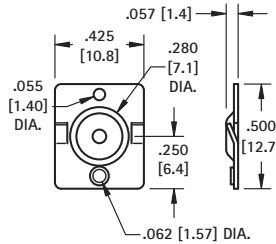
"AA" · "CR2" · "A" · 17-19mm

(-) NEGATIVE SPRING



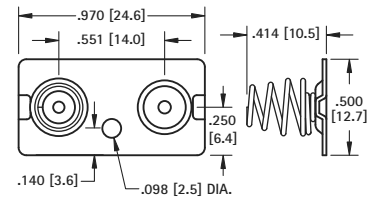
CAT. NO. 5222

(+) POSITIVE BUTTON



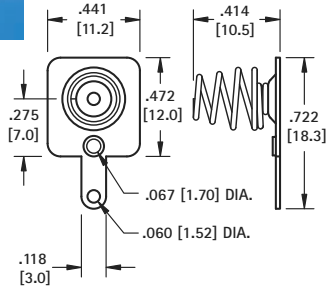
CAT. NO. 5221

DUAL CONTACT ("AA" ONLY)



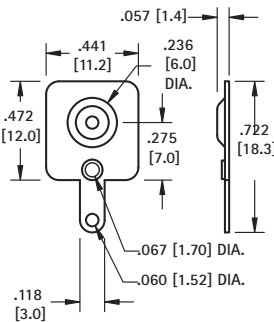
CAT. NO. 5212 Left or Right

(-) NEGATIVE SPRING WITH TAB



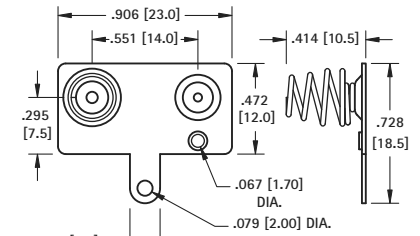
CAT. NO. 5201

(+) POSITIVE BUTTON WITH TAB



CAT. NO. 5223

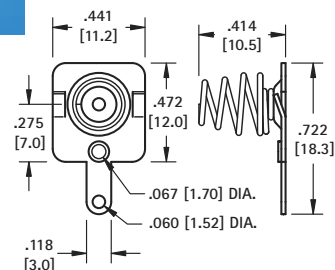
DUAL CONTACT ("AA" ONLY)



CAT. NO. 5210 Left

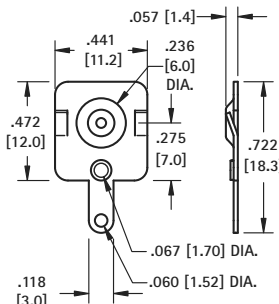
CAT. NO. 5211 Right (Shown)

(-) NEGATIVE SPRING WITH TAB/LANCE



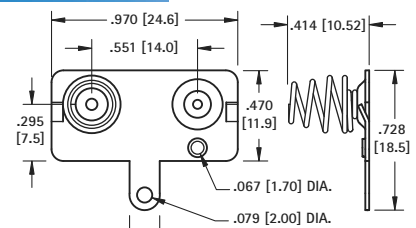
CAT. NO. 5220

(+) POSITIVE BUTTON WITH TAB/LANCE



CAT. NO. 5219

DUAL CONTACT WITH TAB ("AA" ONLY)



CAT. NO. 5218 Left

CAT. NO. 5217 Right (Shown)

Looking for pricing, stock, or lifecycle information?

Click below to explore more details on WIN SOURCE:

- ⊖ [View 5217 on WIN SOURCE](#)
- ⊖ [Keystone Electronics Information](#)

Optimize Your Supply Chain with WIN SOURCE Solutions

- ✓ Global Sourcing Solution
- ✓ Obsolete Management
- ✓ Cost Control Management
- ✓ Shortage Management
- ✓ Alternative Solution
- ✓ Excess Inventory Management