



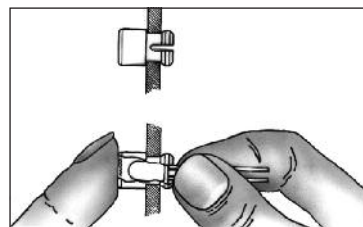
# LED LENS CAPS

Designed for use with T-1 or T-1 3/4 LEDs, these Lens Caps are available in round or square configurations. They snap-mount through the front panel for easy, light-finger pressure, installation. The LED is inserted into the cap from behind the panel and held securely in place.

The Lens Cap protects the LED from physical damage while guarding the components from electrostatic discharge (ESD), up to 16KV. More economical than indicator light assemblies, the caps feature striated lines and fresnel rings which permit up to 180 viewing angles with either diffused or non-diffused LED's. They provide exceptionally high contrast and visibility.



**MATERIAL:** Polycarbonate  
Available in Red, Green, Yellow and Clear



## ROUND CAPS

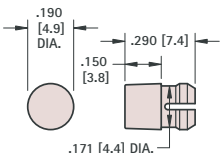


FIG. 1 T-1

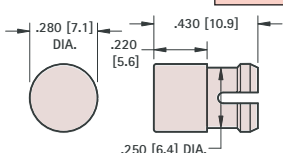


FIG. 2 T-1 3/4

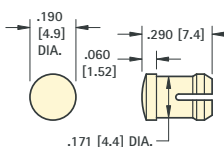


FIG. 3 T-1

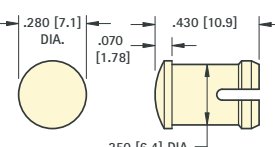


FIG. 4 T-1 3/4

### STANDARD HEIGHT

| CAT. NO. | COLOR  | FIG. NO. | LED SIZE | MTG. HOLE SIZE | MIN. MTG. CENTERS | PANEL THICKNESS         |
|----------|--------|----------|----------|----------------|-------------------|-------------------------|
| 8650     | RED    | 1        | T-1      | .171 (4.3)     | .250 (6.4)        | .031 - .062 (.79/1.57)  |
| 8651     | GREEN  |          |          |                |                   |                         |
| 8652     | YELLOW |          |          |                |                   |                         |
| 8653     | CLEAR  | 2        | T-1 3/4  | .250 (6.4)     | .375 (9.5)        | .062 - .125 (1.57/3.18) |
| 8662     | RED    |          |          |                |                   |                         |
| 8663     | GREEN  |          |          |                |                   |                         |
| 8664     | YELLOW |          |          |                |                   |                         |
| 8665     | CLEAR  |          |          |                |                   |                         |

### LOW PROFILE

| CAT. NO. | COLOR  | FIG. NO. | LED SIZE | MTG. HOLE SIZE | MIN. MTG. CENTERS | PANEL THICKNESS                     |
|----------|--------|----------|----------|----------------|-------------------|-------------------------------------|
| 8656     | RED    | 3        | T-1      | .171 (4.3)     | .250 (6.4)        | .062 - .125 (1.57/3.18)             |
| 8657     | GREEN  |          |          |                |                   |                                     |
| 8658     | YELLOW |          |          |                |                   |                                     |
| 8659     | CLEAR  | 4        | T-1 3/4  | .250 (6.4)     | .375 (9.5)        | .031 - .250 (.79/6.4)<br>(See Note) |
| 8668     | RED    |          |          |                |                   |                                     |
| 8669     | GREEN  |          |          |                |                   |                                     |
| 8670     | YELLOW |          |          |                |                   |                                     |
| 8671     | CLEAR  |          |          |                |                   |                                     |

## SQUARE CAPS

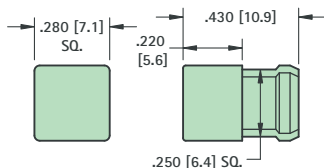


FIG. 5 T-1 3/4

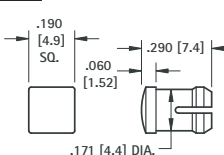


FIG. 6 T-1

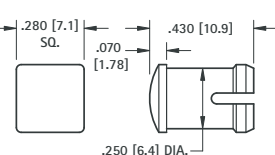


FIG. 7 T-1 3/4

### STANDARD HEIGHT

| CAT. NO. | COLOR  | FIG. NO. | LED SIZE | MTG. HOLE SIZE    | MIN. MTG. CENTERS | PANEL THICKNESS         |
|----------|--------|----------|----------|-------------------|-------------------|-------------------------|
| 8680     | RED    | 5        | T-1 3/4  | .250 (6.4) SQUARE | .375 (9.5)        | .062 - .125 (1.57/3.18) |
| 8681     | GREEN  |          |          |                   |                   |                         |
| 8682     | YELLOW |          |          |                   |                   |                         |
| 8683     | CLEAR  |          |          |                   |                   |                         |

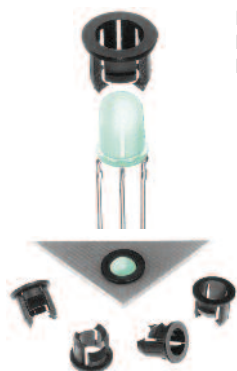
### LOW PROFILE

| CAT. NO. | COLOR  | FIG. NO. | LED SIZE | MTG. HOLE SIZE | MIN. MTG. CENTERS | PANEL THICKNESS                     |
|----------|--------|----------|----------|----------------|-------------------|-------------------------------------|
| 8674     | RED    | 6        | T-1      | .171 (4.3)     | .250 (6.4)        | .062 - .125 (1.57/3.18)             |
| 8675     | GREEN  |          |          |                |                   |                                     |
| 8676     | YELLOW |          |          |                |                   |                                     |
| 8677     | CLEAR  | 7        | T-1 3/4  | .250 (6.4)     | .375 (9.5)        | .031 - .250 (.79/6.4)<br>(See Note) |
| 8686     | RED    |          |          |                |                   |                                     |
| 8687     | GREEN  |          |          |                |                   |                                     |
| 8688     | YELLOW |          |          |                |                   |                                     |
| 8689     | CLEAR  |          |          |                |                   |                                     |

Note: When mounting T-1 3/4 Low Profile Caps (Fig. 4 or Fig. 7) in panels .125 (3.2) thick or less a spacer must be used. **Spacer CAT. NO. 8692 MATERIAL:** White Nylon .360 (9.1) O.D. x 1/4 I.D. x 1/8 Lg.

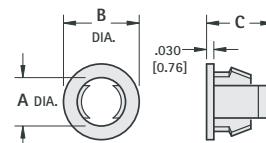
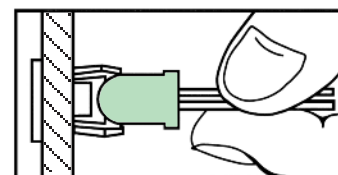
## "SNAP-IN" T-1 & T-1 3/4 LED HOLDERS

Designed for use with T-1 or T-1 3/4 LED's in .060 (1.52) - .070 (1.78) thick panels. The holder snaps into the front panel with easy, light-finger pressure. The LED snaps into the holder from behind the panel and is held securely in place.





**MATERIAL:** Nylon 6/6, Black

| CAT. NO. | LED SIZE | A          | B          | C          | MTG. HOLE SIZE |
|----------|----------|------------|------------|------------|----------------|
| 8309     | T-1      | .114 (2.9) | .232 (5.9) | .188 (4.8) | .171 (4.3)     |
| 8310     | T-1 3/4  | .200 (5.0) | .315 (8.0) | .274 (6.9) | .250 (6.4)     |



## Looking for pricing, stock, or lifecycle information?

Click below to explore more details on WIN SOURCE:

-  [View 8651 on WIN SOURCE](#)
-  [Keystone Electronics](#) Information

## Optimize Your Supply Chain with WIN SOURCE Solutions

-  Global Sourcing Solution
-  Obsolete Management
-  Cost Control Management
-  Shortage Management
-  Alternative Solution
-  Excess Inventory Management