

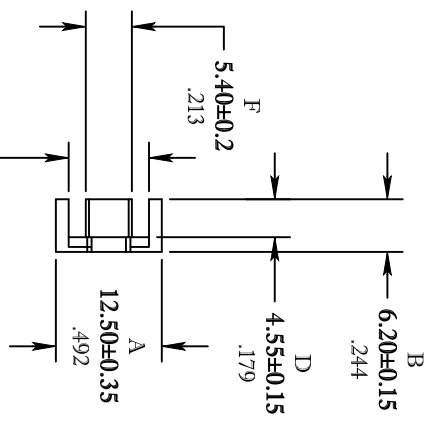


**THE DATASHEET OF**  
**8998121221**



UNCONTROLLED ~ CATALOG ~ DRAWING

SIZE	PART NO.	REV.
B	8998121221	~



DIMENSIONS  
 IN MILLIMETERS  
 DIMENSIONS ARE IN INCHES

ELECTRICAL SPECIFICATIONS					
$\Sigma l/A(\text{mm}^{-1})$	$l_e$ (mm)	$A_e$ (mm <sup>2</sup> )	$V_e$ (mm <sup>3</sup> )	$A_{MIN}$ (mm <sup>2</sup> )	$A_L$ (nH) @ 1 KHz <10 gauss
2.59	28.4	11	311	10.8	730 ± 25%

MATE PAIR: CLAMPING FORCE = 10 lbs.

POWER LOSS @ 100°C  
 $f=100\text{kHz}$ , 2000g P.L. <0.18 Watts

TITLE: EFD CORE					
DRAWN BY	DATE	SIZE	PART NO.	REV.	
J.SERENOSICS	07-13-2018	B	8998121221	~	
CHKD BY		SCALE	NONE	SHEET	1 of 1
APPRVD BY					

FR# 98

## Looking for pricing, stock, or lifecycle information?

Click below to explore more details on WIN SOURCE:

 [View 8998121221 on WIN SOURCE](#)

 [FAIR-RITE PRODUCTS](#) Information

## Optimize Your Supply Chain with WIN SOURCE Solutions

-  Global Sourcing Solution
-  Obsolete Management
-  Cost Control Management
-  Shortage Management
-  Alternative Solution
-  Excess Inventory Management