



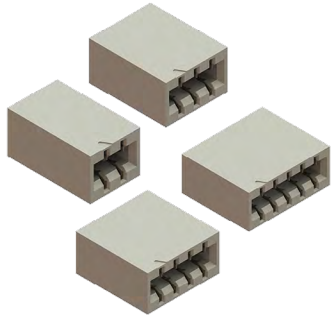
THE DATASHEET OF
009159002001106



STANDARD CARD EDGE: 9159-000



General Information



The 9159 Series Board-to-Board Interconnect System allows two PCBs to be mated end-to-end to create LED lighting strips. Designed specifically for the unique Solid State Lighting (SSL) market that requires coplanar (horizontal-to-horizontal) PCB mating. The 1-Piece Card Edge Connector is designed to provide a reliable, cost effective and simple means of connecting multiple PCB's together. The single stamped contact has dual contact beams to provide high contact force on standard 1.6mm PCBs. These connectors are available in 2 to 5 positions and are centered on a 2.0mm pitch to provide a 3 amp continuous rating.

APPLICATIONS

- Coplanar PCB mating in SSL products
- LED linear lighting strips
- Product Specification: Refer to 201-01-118
- Application Notes: Refer to 201-01-147

FEATURES AND BENEFITS

- Dual contacts provide positive contact force for enhanced reliability
- Mates with standard 1.6 ± 0.15 mm PCB on 2.0mm pad pitch
- 3 amp current rating for high current applications
- Available in white: supports SSL market preferences

ELECTRICAL

- Current Rating: 3 Amps / Contact
- Voltage Rating: 300 VAC (RMS) or DC equivalent


ENVIRONMENTAL

- Operating Temperature: -40°C to +125°C
- Storage Temperature: -40°C to +80°C

MECHANICAL

- Insulator Material: Nylon 46: UL94HB
- Contact Material: Phosphor Bronze
- Plating: Tin over Nickel
- Durability: 5 Cycles

HOW TO ORDER

00	9159	00X	0	01	X	1	X	
Prefix	Series	Number of Ways 002 = 2 003 = 3 004 = 4 005 = 5	Single Part PCB Strip Connector	PCB Thickness 01 = 1.60 ± 0.15	Color Options 8 = UL Black 9 = UL White	Packaging Options 1 = Bag (std) 0 = Tape And Reel	Plating Option 1 = Gold Flash 6 = Pure Tin all over	

SALES DRAWINGS
CLICK TO DOWNLOAD

Safety Standards: UL 1977-File #E90723, CSA C22.2 NO. 182.3



Looking for pricing, stock, or lifecycle information?

Click below to explore more details on WIN SOURCE:

 [View 009159002001106 on WIN SOURCE](#)

 [AVX Corp/Kyocera Corp](#) Information

Optimize Your Supply Chain with WIN SOURCE Solutions

-  Global Sourcing Solution
-  Obsolete Management
-  Cost Control Management
-  Shortage Management
-  Alternative Solution
-  Excess Inventory Management