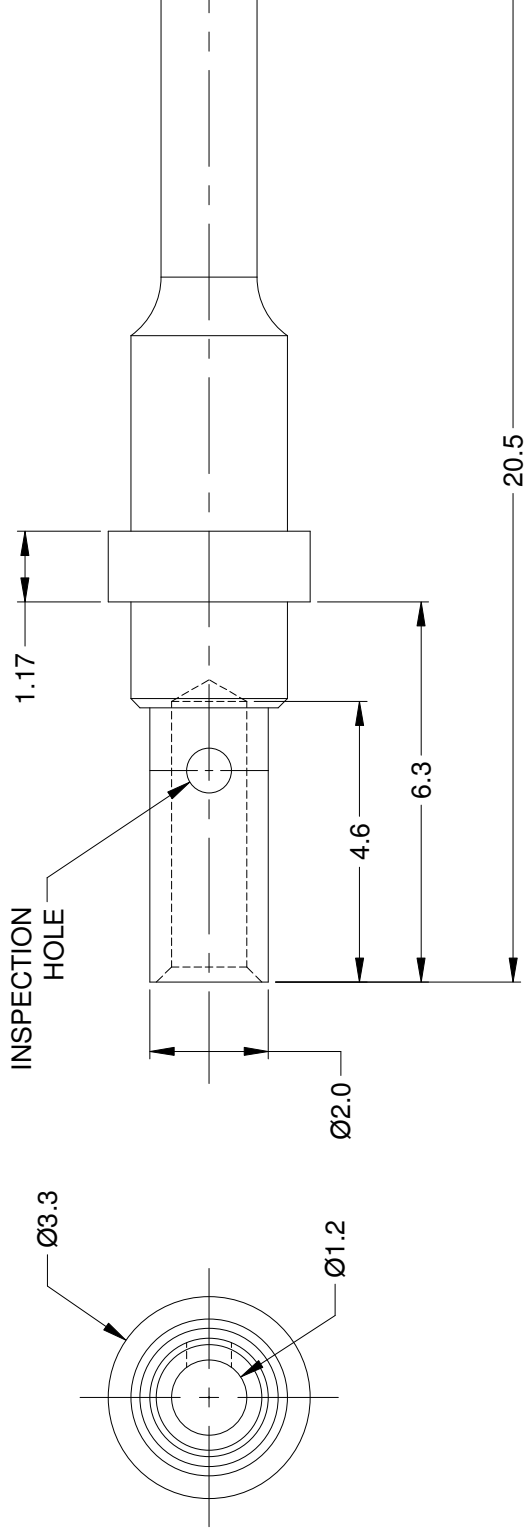




THE DATASHEET OF
65-54756



| REV | ECO | DESCRIPTION |
|-----|-----|----------------------|
| A1 | - | RELEASE NEW DWG FORM |



NOTES: UNLESS OTHERWISE SPECIFIED



1. MATERIAL: COPPER ALLOY
2. PLATING: GOLD OVER NICKEL
3. CONTACT SIZE: 16
4. SPECIFICATIONS:
 - 4.1 CURRENT RATING: 13 AMPS
 - 4.2 CONTACT MILLIVOLT DROP: 60 MILLIVOLT DROP @ 13 AMP TEST CURRENT.
 - 4.3 RoHS COMPLIANT
5. RECOMMENDED WIRE RANGE: 20 AWG
6. ALL DIMENSIONS ARE FOR REFERENCE USE ONLY

| QUANTITY | PART NUMBER | SIGNATURES | DATE | DE |
|--------------------------------------|-------------|--------------------------|------|----|
| | 65-54756 | | | |
| MATERIALS LIST | | | | |
| UNLESS OTHERWISE SPECIFIED | | A | | |
| 1) All dimensions are in metric(mm). | | Sir | | |
| 2) Tolerances are as follows: | | | | |
| 1 PL DEC ±0.30 Fractions ± 1/64 | | DRAWN: J. HEAD 08FEB2017 | | |
| 2 PL DEC ±0.15 Angles ±1° | | CHECKED: | | |
| 3 PL DEC ±0.08 | | ENGINEER: | | |
| 3) Note reference = $\triangle X$ | | APPROVAL: | | |
| MATERIAL SPECIFICATIONS: | | CUSTOMER: | | |
| PROCESS SPECIFICATIONS: | | COIL 20 | | |
| NEXT ASSY: | | SIZE TYPE | | |
| | | A C- | | |
| | | SCALE: NONE | | |

THIS DRAWING IS SUPPLIED FOR INFORMATION ONLY. DESIGN FEATURES, SPECIFICATIONS AND PERFORMANCE DATA SHOWN HEREON ARE THE PROPERTY OF THE ORIGINAL CONTRACTOR. NO RIGHTS OF INVENTION OR PATENT ARE IMPLIED. DIMENSIONS ARE SUBJECT TO NORMAL MANUFACTURING VARIATIONS.

Looking for pricing, stock, or lifecycle information?

Click below to explore more details on WIN SOURCE:

-  [View 65-54756 on WIN SOURCE](#)
-  [Amphenol Sine Systems Corp Information](#)

Optimize Your Supply Chain with WIN SOURCE Solutions

-  Global Sourcing Solution
-  Obsolete Management
-  Cost Control Management
-  Shortage Management
-  Alternative Solution
-  Excess Inventory Management