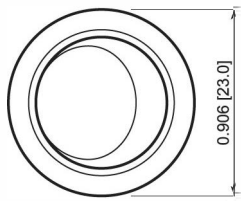




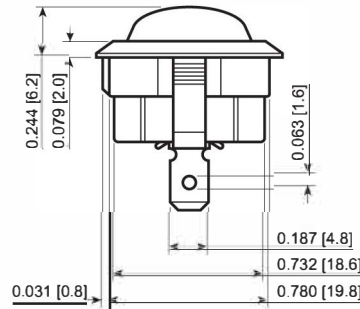
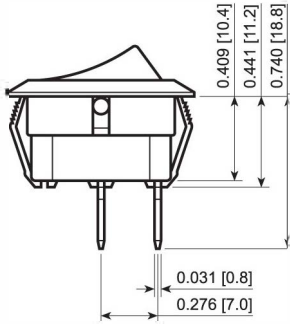
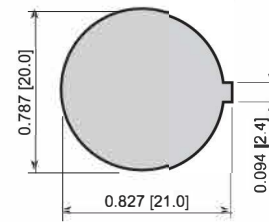
**THE DATASHEET OF
RR511D1100**



ROCKER



Suggested Panel Cutout



FEATURES:

- Aesthetically Designed
- High Ratings with UL Approval
- Single Pole With Various Functions
- Short Body for Low Clearance Applications

SPECIFICATIONS:

RATING: RATING OPTION D:
 20A 125VAC T65 [UL, cUL]
 12A 250VAC T65 [UL, cUL]

TEMPERATURE: -20°C to 65°C [UL, cUL]

ELECTRICAL LIFE: 10,000 Cycles

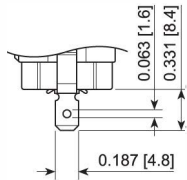
CONTACT RESISTANCE: 35mΩ Max. at 50VAC

INSULATION RESISTANCE: 100MΩ Min. at 500VAC

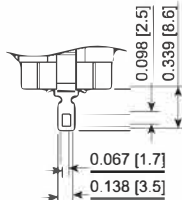
DIELECTRIC STRENGTH: 1,500VAC for 1 Minute

Panel Thickness: 1-2mm

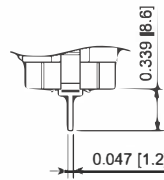
Terminal Options



4.8mm Tab



Solder



PCB Pin



RR51D1123

Series	Terminal	Function	Rating	Body Color	Actuator Color	Marking Color	Marking Type
RR5	1 - 4.8mm Tab (Small Hole) 3 - PCB Pins 5 - Solder	1 - Off-On 4 - Off-(On)	D - 20A 125VAC	1 - Black 2 - White 4 - Grey 9 - Red	1 - Black 2 - White 4 - Grey 5 - Orange 7 - Blue 8 - Green 9 - Red	0 - None 1 - Black 2 - White 8 - Red	0 - None 1 - I/O Vert. 3 - ON/OFF Vert. 4 - ON/OFF Horiz. R - I/O Horiz.

Custom Colors and Markings Available Upon Request

EXAMPLE PART NUMBERS:

RR51D1100 1P Off-On
 Black Body/Actuator, No Marking

RR51D1121 1P Off-On
 Black Body/Actuator, I/O Vert.

Looking for pricing, stock, or lifecycle information?

Click below to explore more details on WIN SOURCE:

 [View RR511D1100 on WIN SOURCE](#)

 [E-SWITCH Information](#)

Optimize Your Supply Chain with WIN SOURCE Solutions

-  Global Sourcing Solution
-  Obsolete Management
-  Cost Control Management
-  Shortage Management
-  Alternative Solution
-  Excess Inventory Management