

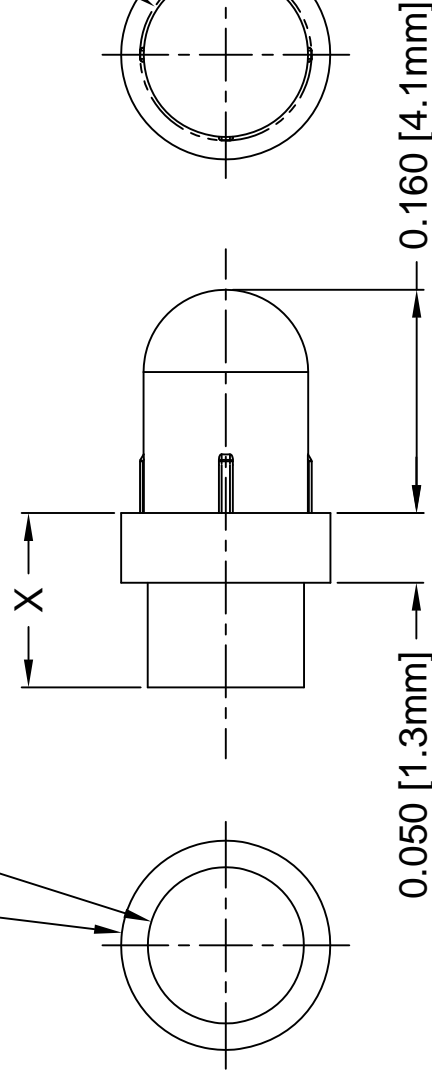


THE DATASHEET OF PLP1-750

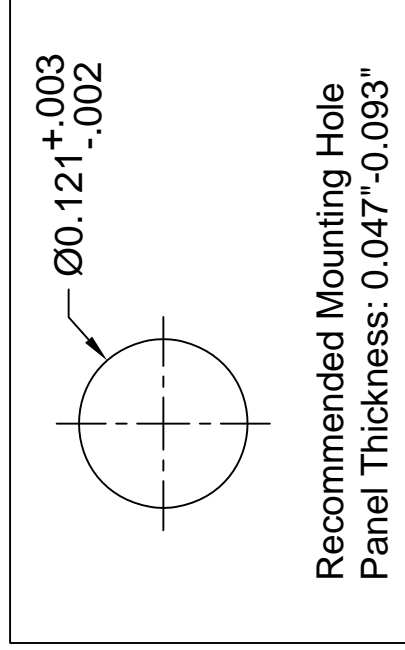


Part No.	X = Body Length
PLP1-100	0.100 (2.5mm)
PLP1-125	0.125 (3.2mm)
PLP1-175	0.175 (4.4mm)
PLP1-188	0.188 (4.8mm)
PLP1-200	0.200 (5.1mm)
PLP1-250	0.250 (6.4mm)
PLP1-313	0.313 (7.9mm)
PLP1-350	0.350 (8.9mm)
PLP1-375	0.375 (9.5mm)
PLP1-460	0.460 (11.7mm)
PLP1-500	0.500 (12.7mm)
PLP1-625	0.625 (15.9mm)
PLP1-750	0.750 (19.0mm)
PLP1-3MM	3mm (0.118")
PLP1-4MM	4mm (0.157")
PLP1-5MM	5mm (0.197")
PLP1-6MM	6mm (0.236")
PLP1-7MM	7mm (0.276")
PLP1-8MM	8mm (0.315")
PLP1-9MM	9mm (0.354")
PLP1-10MM	10mm (0.394")

Ø0.150 [Ø3.8mm]
FLANGE
Ø0.112 [Ø2.8mm]



**BODY LENGTHS FOR CLEAR
LIGHT PIPES.**



**Recommended Mounting Hole
Panel Thickness: 0.047"-0.093"**

2. MATERIAL: POLYCARBONATE, 94V-0, CLEAR.

**1. GENERAL SPECIFICATIONS: BIVAR MOLDED COMPONENT SPECIFICATION BV00-E101
and BS5MC-1001.**

REV.	DESCRIPTION
P	Added Panel Thickness
Q	Added .100", .188", .31
R	Added Metric Lengths
T	Added Color Options.
U	Updated Color Options

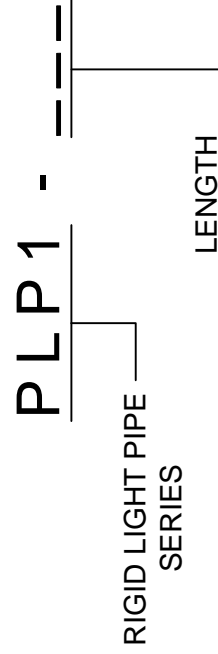
STANDARD TOLERANCES (UNLESS OTHERWISE SPECIFIED)		ANGULAR	X°
DECIMALS			
.X	±.1		
.XX	±.01		
.XXX	±.005		
DESIGNED:	M. CHEN	DATE:	01/1/11
REVISION:	K. BARON	DATE:	07/07/11
CHECKED:	TD. NGUYEN	DATE:	07/07/11

OTHER AVAILABLE COLORS

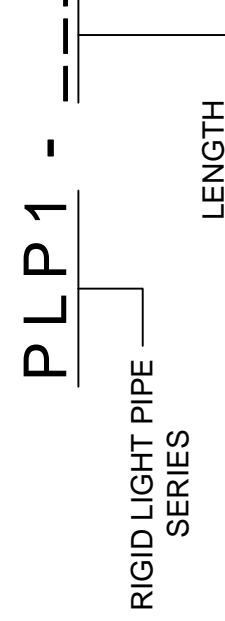
* SEE TABLE FOR ORDERING INFORMATION

REV.	SEE SHEET #1

AVAILABLE COLOR OPTIONS



PART NUMBER	BODY LENGTH
PLP1-100	0.100" (2.5mm)
PLP1-125	0.125" (3.2mm)
PLP1-2.5mm	2.5mm (0.100")
PLP1-3mm	3mm (0.118")



COLOR	Order Code
TINTED BLUE	BE
TINTED GREEN	GN
TINTED RED	RD
TINTED YELLOW	YW

PART NUMBER	BODY LENGTH
PLP1-100	0.100" (2.5mm)
PLP1-125	0.125" (3.2mm)
PLP1-2.5mm	2.5mm (0.100")
PLP1-3mm	3mm (0.118")

Looking for pricing, stock, or lifecycle information?

Click below to explore more details on WIN SOURCE:

 [View PLP1-750 on WIN SOURCE](#)

 [Bivar Inc. Information](#)

Optimize Your Supply Chain with WIN SOURCE Solutions

-  Global Sourcing Solution
-  Obsolete Management
-  Cost Control Management
-  Shortage Management
-  Alternative Solution
-  Excess Inventory Management