

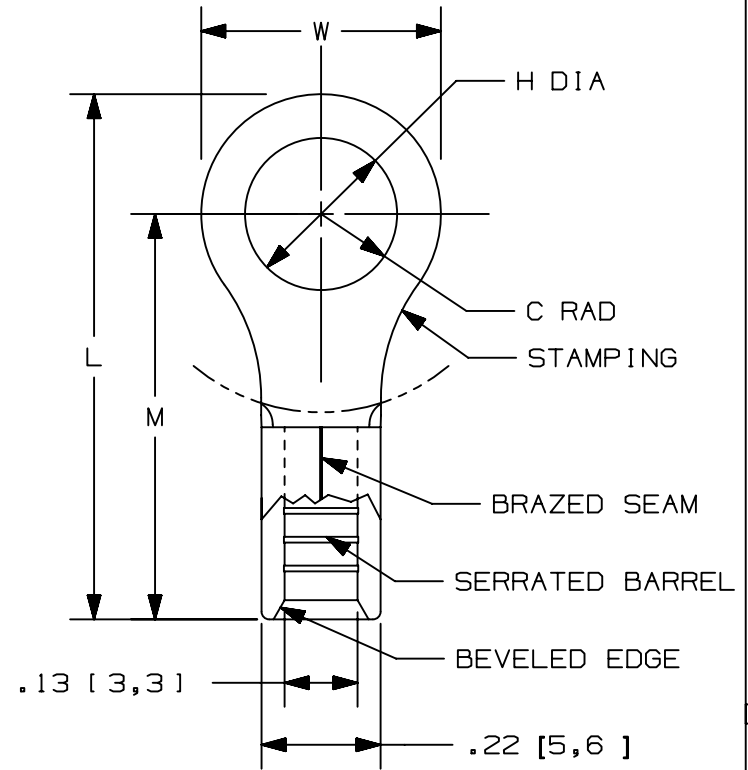


**THE DATASHEET OF
P10-10R-D**



THIS COPY IS PROVIDED ON A RESTRICTED BASIS AND IS NOT TO BE USED IN ANY WAY DETRIMENTAL TO THE INTERESTS OF PANDUIT CORP.

PANDUIT PART #	MILITARY PART NO. AND CLASS	STUD SIZE		DIMENSIONS in. [mm]				
		ENGLISH	METRIC	L ± .03 [0,76]	W ± .01 [0,25]	C ± .02 [0,51]	M ± .03 [0,76]	H ± .01 [0,25]
PM6-3R	-----	--	M3	.76 [19,2]	.23 [5,8]	.31 [7,9]	.62 [15,8]	.13 [3,3]
P10-6R	MS20659-165 CLASS 1 & 2	#6	M3,5	.78 [19,8]	.31 [7,9]	.31 [7,9]	.62 [15,8]	.15 [3,8]
P10-8R	-----	#8	M4	.78 [19,8]	.31 [7,9]	.31 [7,9]	.62 [15,8]	.17 [4,3]
P10-10R	MS20659-105 CLASS 1 & 2	#10	--	.81 [20,6]	.38 [9,7]	.31 [7,9]	.62 [15,8]	.20 [5,1]
PM6-5R	-----	--	M5	.81 [20,6]	.37 [9,50]	.31 [7,9]	.62 [15,8]	.21 [5,3]
P10-14R	-----	1/4"	M6	.96 [24,4]	.52 [13,2]	.38 [9,7]	.70 [17,8]	.27 [6,9]
P10-56R	MS20659-106 CLASS 1 & 2	5/16"	M6	.95 [24,1]	.52 [13,2]	.38 [9,7]	.70 [17,8]	.33 [8,4]
P10-38R	MS20659-128 CLASS 1 & 2	3/8"	M8	1.05 [26,7]	.58 [14,7]	.44 [11,2]	.75 [19,1]	.39 [9,9]
P10-12R	-----	1/2"	--	1.20 [30,5]	.72 [18,3]	.53 [13,5]	.84 [21,3]	.52 [13,2]



- NOTES:
- USED FOR:
 - A. 14-10 AWG [2,5-6,0 mm²] SOILD OR STRANDED COPPER WIRE
 - B. 302°F [150°C] MAX. TEMP. RATING
 - INSTALLATION TOOLS:
 - A. UL LISTED AND CSA CERTIFIED:
 - CT-100A, CT-200, CT-600-A (CT-570CH)
 - CT-1570, CT-1701, CT-2500 (CT-2570CH)
 - B. PANDUIT APPROVED: CT-160, CT-260
 - WIRE STRIP LENGTH: 9/32 ^{+1/32} [7,1 ^{+0,8}]
 - MATERIAL:
 - A. STAMPING: .04" [1,0] THK COPPER, TIN PLATED
 - SEE www.panduit.com FOR PACKAGE QUANTITIES INDICATED BY PART NUMBER SUFFIX
 - DIMENSIONS IN BRACKETS ARE METRIC EQUIVALENT



LISTED
587H
E52164



CERTIFIED
LR31212

REV	DATE	BY	CHK	APR	DESCRIPTION	ECN
11	12-15-17	JEH	SKB	JADE	CORRECTED NOTE 1 WAS 12-10 AWG [4.0-6,0 mm ²]	019893
10	08.30.12	JBN	LCA	VMB	REVISED NOTE #6A. REVISED INSTALLATION TOOLS NOTE. UPDATED DRAWING TO CURRENT STANDARD. ADDED METRIC EQUIVALENTS.	A41188

TITLE		RING TERMINALS, NON-INSULATED, #12-10	
ITEM REVISION NAME		CUSTOMER DRAWING	
DATASET FILE NAME		N41188BB/11	
MATERIAL:		SEE NOTES	
DRAWING NUMBER:		A41188	
UNLESS OTHERWISE SPECIFIED, DIMENSIONAL TOLERANCES ARE: IN [mm]	DRAWING NUMBER:		
.x ± .1 [2.54]	DRAWING NUMBER:		
.xxx ± .005 [.13]	DRAWING NUMBER:		
.xx ± .01 [.25]	DRAWING NUMBER:		
ANGLES ± 5 °	DRAWING NUMBER:		
THIRD ANGLE PROJECTION	DRAWING NUMBER:		
DRAWN BY	DATE	CHK	SCALE
FES	-	LCA	N.T.S.
SHEET 1 OF 1		A	

Looking for pricing, stock, or lifecycle information?

Click below to explore more details on WIN SOURCE:

 [View P10-10R-D on WIN SOURCE](#)

 [Panduit Corp](#) Information

Optimize Your Supply Chain with WIN SOURCE Solutions

-  Global Sourcing Solution
-  Obsolete Management
-  Cost Control Management
-  Shortage Management
-  Alternative Solution
-  Excess Inventory Management