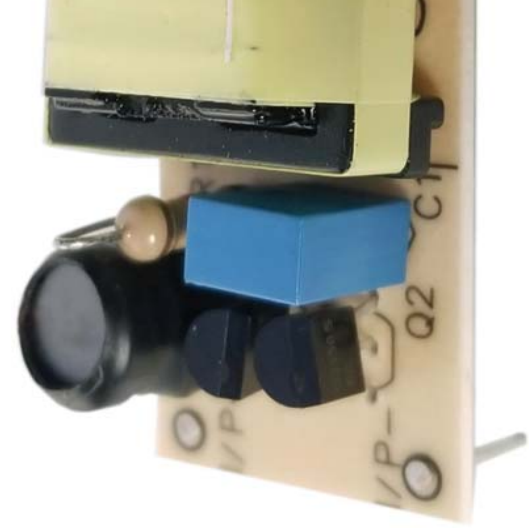
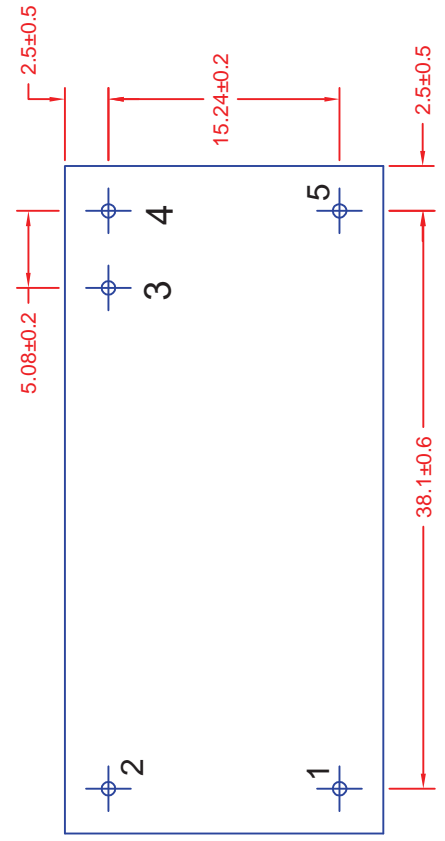
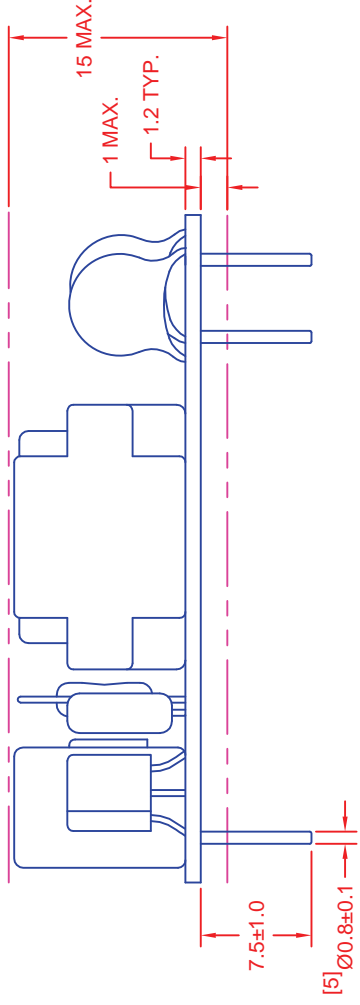
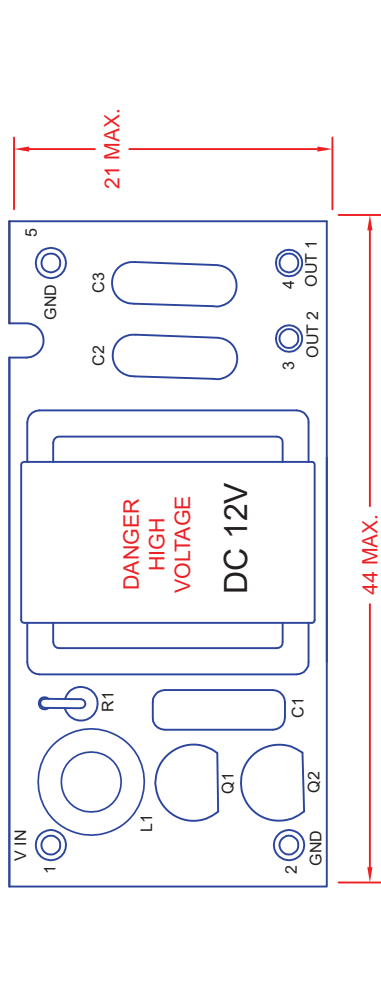




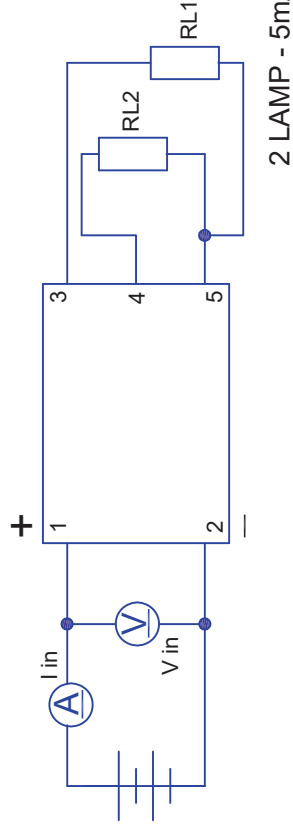
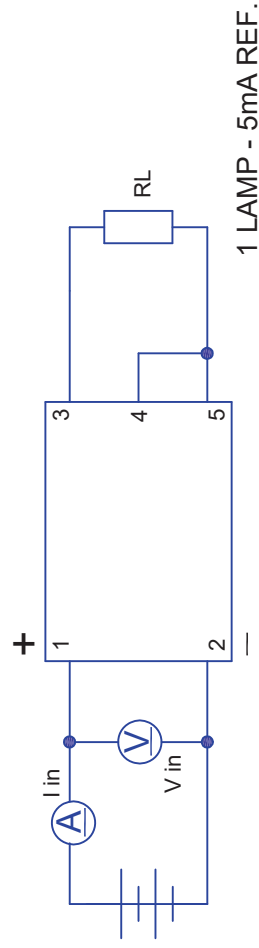
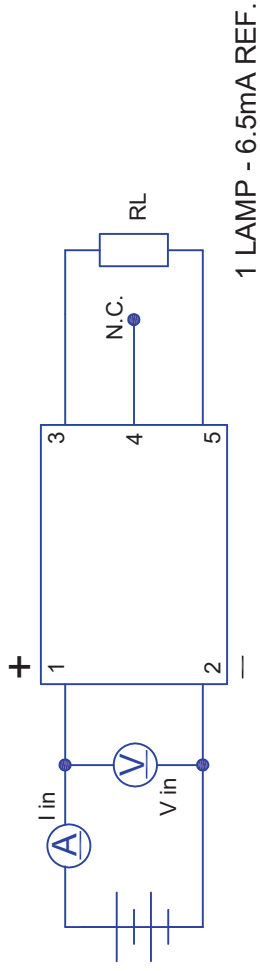
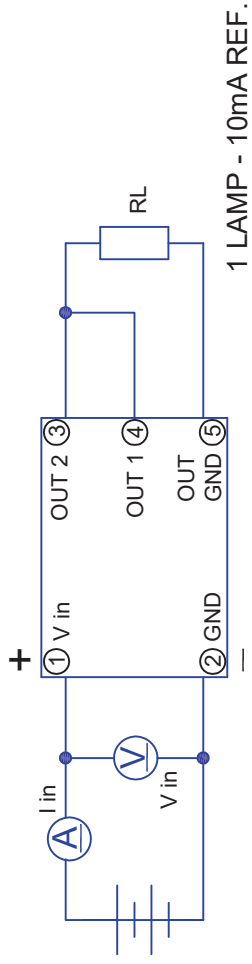
REV.	RE
A	DM
B	Ro
C	CH
D	AD
E	AD



JKL PART NO.: BXA-12529  
 \*RoHS COMPLIANCE

<b>METRIC</b>  DIMENSIONS ARE IN MILLIMETERS TOLERANCE UNLESS OTHERWISE SPECIFIED 1. PL +/- 0.3 2. PL +/- ANGLE +/- 0	DRAWN BY <b>L. WENGSTROM</b>	APP'D BY <b>S.N. 1/15/21</b>	DATE <b>1/15/21</b>
	TITLE <b>12 V DUAL</b>	FSCM NO. <b>55335</b>	DRAWING NO. <b>55335</b>
SCALE <b>A</b>		MANUAL REVISIONS NOT PERMITTED	

**JKL COM**



BOARD PIN #	INPUT
1	+V (V in)
2	V (GND)
3	OUT2
4	OUT 1
5	OUT (GND)

### CHARACTERISTICS

INPUT VOLTAGE: (Vdc)  
 INPUT CURRENT: (mA)  
 OUTPUT VOLTAGE: (Vrms)  
 OUTPUT CURRENT (mA) x 2  
 OUTPUT FREQUENCY: (kHz)  
 OPERATING TEMP: (CELSIUS)

METRIC



DRAWN BY  
L. WENGSTROM

APPROVED BY  
S.N. 1/15/21

DATE

DRAWING NO.  
55335

RELEASED DATE

SCALE

FSCM NO.

SIZE  
A

OPERATING TEMP  
NONE

DIMENSIONS ARE IN MILLIMETERS

TOLERANCE UNLESS OTHERWISE SPECIFIED

1 PL +/- 0.3

2 PL +/- 0

ANGLE +/- 0

TITLE

JKL COM

12 V DUAL C

MANUAL REVISIONS NOT PERMITTED

3

## Looking for pricing, stock, or lifecycle information?

Click below to explore more details on WIN SOURCE:

- ⊖ [View BXA-12529 on WIN SOURCE](#)
- ⊖ [JKL Components Corp. Information](#)

## Optimize Your Supply Chain with WIN SOURCE Solutions

- ✓ Global Sourcing Solution
- ✓ Obsolete Management
- ✓ Cost Control Management
- ✓ Shortage Management
- ✓ Alternative Solution
- ✓ Excess Inventory Management