



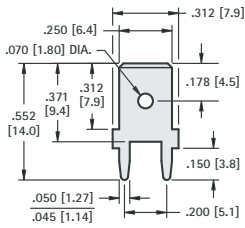
THE DATASHEET OF
4914



.250 (6.4) PC QUICK-FIT MALE TABS



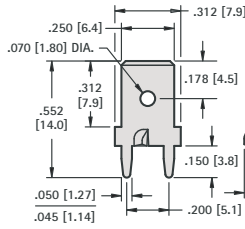
.250 (6.4) TAB



CAT. NO.	MATERIAL	MTG. HOLES
1287	.032 (.80) Brass, Tin Plate	.052 (1.3) Dia.

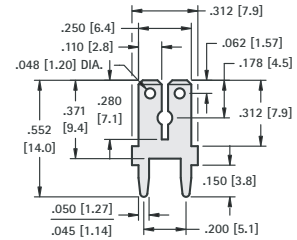
.250 (6.4) TAB

STURDI-MOUNT



CAT. NO.	MATERIAL	MTG. HOLES
1287-ST	.032 (.80) Brass, Tin Plate	.052 (1.3) Dia.

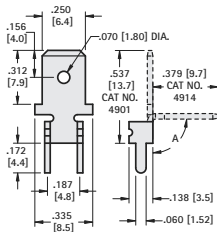
DUAL .110 (2.8)/.250 (6.4) TAB



CAT. NO.	MATERIAL	MTG. HOLES
1282	.032 (.80) Brass, Tin Plate	.052 (1.3) Dia.

.250 (6.4) TAB

STURDI-MOUNT

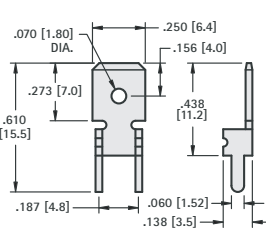


MATERIAL: .032 (.80) Brass, Matte Tin Plate

CAT. NO.	ANGLE A	MTG. HOLES
4901	0°	.067 (1.7) Dia.
4914*	90°	

.250 (6.4) TAB

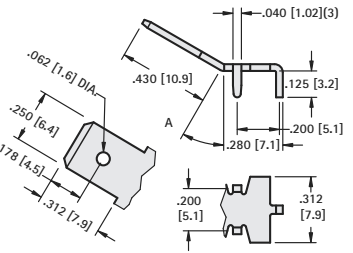
STURDI-MOUNT



CAT. NO.	MATERIAL	MTG. HOLES
4902	.032 (.80) Brass, Tin Plate	.067 (1.7) Dia.

.250 (6.4) TAB

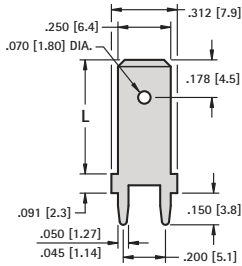
STURDI-MOUNT



MATERIAL: .032 (.80) Brass, Matte Tin Plate

CAT. NO.	ANGLE A	MTG. HOLES
4910	0°	.052 (1.3) Dia.
4908	30°	
4912	60°	

.250 (6.4) TAB

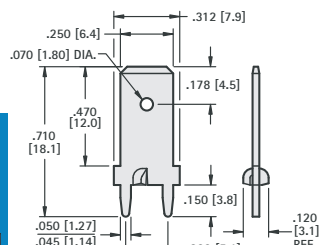


MATERIAL: .032 (.80) Brass, Matte Tin Plate

CAT. NO.	"L"	MTG. HOLES
1289	.540 (13.7)	.052 (1.3) Dia.
1203	.657 (16.7)	
1292	.710 (18.0)	
1225	1.039 (26.4)	

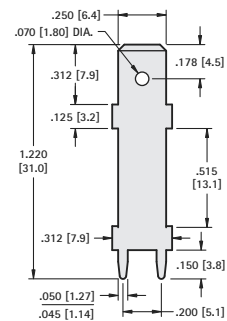
.250 (6.4) TAB

STURDI-MOUNT



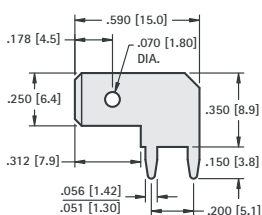
CAT. NO.	MATERIAL	MTG. HOLES
1289-ST	.032 (.80) Brass, Tin Plate	.052 (1.3) Dia.

.250 (6.4) TAB



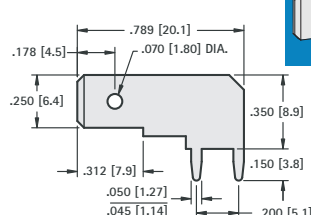
CAT. NO.	MATERIAL	MTG. HOLES
1281	.032 (.80) Brass, Tin Plate	.052 (1.3) Dia.

.250 (6.4) TAB



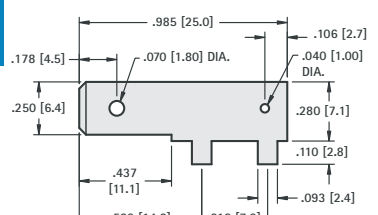
CAT. NO.	MATERIAL	MTG. HOLES
4966	.032 (.80) Brass, Tin Plate	.056 (1.4) Dia.

.250 (6.4) TAB



CAT. NO.	MATERIAL	MTG. HOLES
1266	.032 (.80) Brass, Tin Plate	.052 (1.3) Dia.

.250 (6.4) TAB





CAT. NO.	MATERIAL	MTG. HOLES
1265*	.032 (.80) Brass, Tin Plate	.106 (2.7) Dia.

* Not UL Recognized

Looking for pricing, stock, or lifecycle information?

Click below to explore more details on WIN SOURCE:

-  [View 4914 on WIN SOURCE](#)
-  [Keystone Electronics Information](#)

Optimize Your Supply Chain with WIN SOURCE Solutions

-  Global Sourcing Solution
-  Obsolete Management
-  Cost Control Management
-  Shortage Management
-  Alternative Solution
-  Excess Inventory Management