



**THE DATASHEET OF**  
**1241.1618.23**



Print and SMD Switch Short Stroke 11.4 mm



SMS with Gullwing lead, IP40



SMS with adapter and elongated button, J-lead

See below:

**Approvals and Compliances**

**Description**

- Switches are possible with different heights
- High-quality gold and silver contacts
- Solder terminals

**Unique Selling Proposition**

- Reliable tactile feedback on input
- Simple assembly
- Long life time

**Weblinks**

[pdf data sheet](#), [html datasheet](#), [General Product Information](#), [CAD-Drawings](#), [Product News](#), [Detailed request for product](#)

**Technical Data**

**Electrical Data**

|                          |  |
|--------------------------|--|
| Switching Voltage        | 30 VAC/ 42 VDC                                     |
| Switching current        | 50 mA  |
| Rated Switching Capacity | 0.12 W   |
| Lifetime                 | > 1 million actuations at Rated Switching Capacity |
| Contact Resistance       | < 50 mΩ<br>< 150 mΩ after lifetime                 |
| Insulation Resistance    | > 100 MΩ   |
| Duration of Bounce       | typ. 0.15 ms                                       |

**Mechanical Data**

|                   |  |
|-------------------|--|
| Actuating Force   | IP40 : 1.8 ± 0.4 N<br>IP67 : 2.2 ± 0.4 N |
| Actuating Travel  | 0.35 ± 0.1 mm                            |
| End Stop Strength | > 100 N                                  |
| Lifetime          | > 1 million actuations                   |

**Climatical Data**

|                       |                 |
|-----------------------|-----------------|
| Operating Temperature | -40 °C to 85 °C |
| Storage Temperature   | -40 °C to 85 °C |
| IP-Protection         | IP40 / IP67     |

**Soldering Data**

|                              |  |
|------------------------------|--|
| Soldering Methods            | Reflow                                   |
| Solderability                | 245 °C / 5 sec (IEC 60068-2-58 Test Td)  |
| Resistance to Soldering Heat | 260 °C / 10 sec (IEC 60068-2-58 Test Td) |

**Material**

|                       |                            |
|-----------------------|----------------------------|
| Sealing membrane IP67 | VMQ                        |
| Contact Material Gold | CuZn37 1.5 μm Ni 0.5 μm Au |
| Terminals             | CuZn37 SnNi                |
| Socket                | Thermoplastic (PA 4.6)     |
| Actuator              | PA4                        |
| Cover of Actuator     | X 12 CrNi 17 7             |
| Elongated Button      | Thermoplastic (PC)         |

**Approvals and Compliances**

Detailed information on product approvals, code requirements, usage instructions and detailed test conditions can be looked up in [Details about Approvals](#)

SCHURTER products are designed for use in industrial environments. They have approvals from independent testing bodies according to national and international standards. Products with specific characteristics and requirements such as required in the automotive sector according to IATF 16949, medical technology according to ISO 13485 or in the aerospace industry can be offered exclusively with customer-specific, individual agreements by SCHURTER.




**Application standards**

Application standards where the product can be used

| Organization | Design                         | Standard       | Description   |
|--------------|--------------------------------|----------------|---|
|              | Suitable for applications acc. | IEC/UL 62368-1 | Audio/video, information and communication technology equipment - Part 1: Safety requirements |

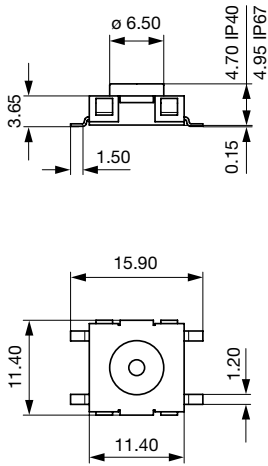
**Compliances**

The product complies with following Guide Lines

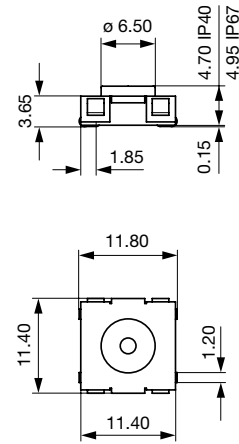
| Identification   | Details    | Initiator   | Description   |
|--|------------|-------------|---|
|  | RoHS       | SCHURTER AG | Directive RoHS 2011/65/EU, Amendment (EU) 2015/863  |
|  | China RoHS | SCHURTER AG | The law SJ / T 11363-2006 (China RoHS) has been in force since 1 March 2007. It is similar to the EU directive RoHS.  |
|  | REACH      | SCHURTER AG | On 1 June 2007, Regulation (EC) No 1907/2006 on the Registration, Evaluation, Authorization and Restriction of Chemicals 1 (abbreviated as "REACH") entered into force. |

**Dimension [mm]**

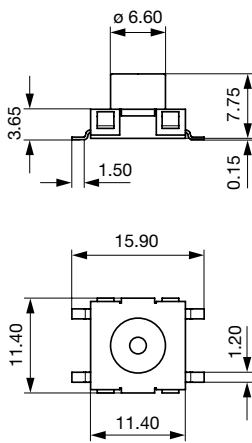
SMS Gullwing Base module



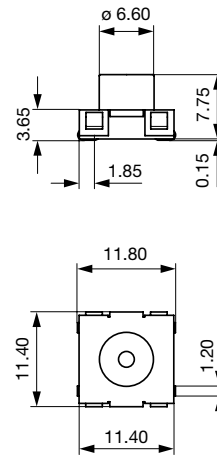
SMS J-lead Base module



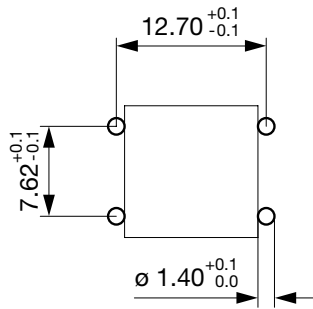
SMS Gullwing Variable height



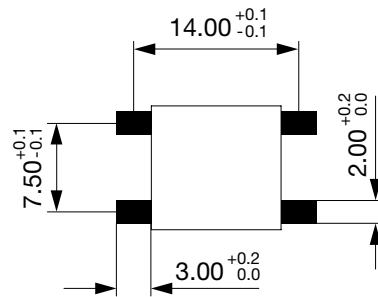
SMS J-lead Variable height



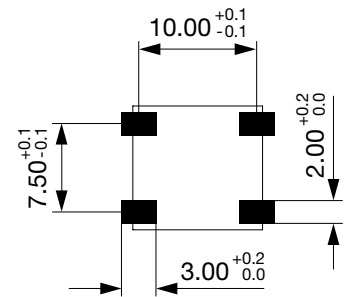
PCP Lead



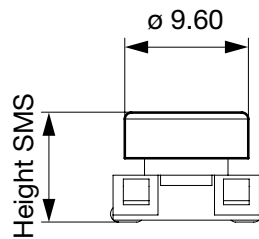
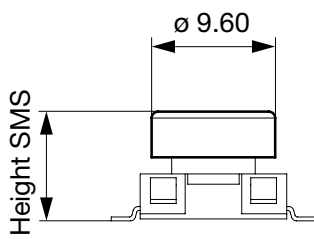
Gullwing Lead



J-Lead

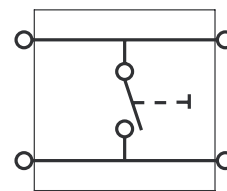
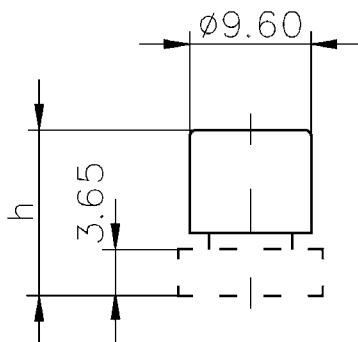


SMS Gullwing with elongated button    SMS J lead with elongated button




Diagrams

Circuit Diagram SMS/PMS



## Order number key

|   |   |   |   |     |   |     |   |    |   |   |   |   |   |   |   |   |
|---|---|---|---|-----|---|-----|---|----|---|---|---|---|---|---|---|---|
| S | M | S | - | H07 | - | D09 | - | AG | - | B | - | S | - | A | - | 0 |
| 1 |   |   |   | 2   |   | 3   |   | 4  |   | 5 |   | 6 |   | 7 |   | 8 |

|                          |  |  |  |  |  |  |   |  |  |  |  |  |  |  |  |  |  |  |
|--------------------------|--|--|--|--|--|--|---|--|--|--|--|--|--|--|--|--|--|--|
| <b>Type</b>              |  |  |  |  |  |  |   |  |  |  |  |  |  |  |  |  |  <b>1</b> |  |
| PMS                      |  |  |  |  |  |  | = |  |  |  |  |  |  |  |  |  | PMS  |  |
| SMS                      |  |  |  |  |  |  | = |  |  |  |  |  |  |  |  |  | SMS  |  |
| <b>Switch height</b>     |  |  |  |  |  |  |   |  |  |  |  |  |  |  |  |  |  |  <b>2</b>   |
| 4.55 mm                  |  |  |  |  |  |  | = |  |  |  |  |  |  |  |  |  | H06  |  |
| 4.7 mm                   |  |  |  |  |  |  | = |  |  |  |  |  |  |  |  |  | H07  |  |
| 7.6 mm                   |  |  |  |  |  |  | = |  |  |  |  |  |  |  |  |  | H14  |  |
| 7.75mm                   |  |  |  |  |  |  | = |  |  |  |  |  |  |  |  |  | H15  |  |
| 8.35 mm                  |  |  |  |  |  |  | = |  |  |  |  |  |  |  |  |  | H18  |  |
| 9.1 mm                   |  |  |  |  |  |  | = |  |  |  |  |  |  |  |  |  | H20  |  |
| 9.85 mm                  |  |  |  |  |  |  | = |  |  |  |  |  |  |  |  |  | H24  |  |
| 10.6 mm                  |  |  |  |  |  |  | = |  |  |  |  |  |  |  |  |  | H26  |  |
| 11.35 mm                 |  |  |  |  |  |  | = |  |  |  |  |  |  |  |  |  | H28  |  |
| 12.1 mm                  |  |  |  |  |  |  | = |  |  |  |  |  |  |  |  |  | H30  |  |
| 12.4 mm                  |  |  |  |  |  |  | = |  |  |  |  |  |  |  |  |  | H32  |  |
| 12.85 mm                 |  |  |  |  |  |  | = |  |  |  |  |  |  |  |  |  | H34  |  |
| 13.6 mm                  |  |  |  |  |  |  | = |  |  |  |  |  |  |  |  |  | H36  |  |
| 14.35 mm                 |  |  |  |  |  |  | = |  |  |  |  |  |  |  |  |  | H39  |  |
| 15.1 mm                  |  |  |  |  |  |  | = |  |  |  |  |  |  |  |  |  | H41  |  |
| 15.85 mm                 |  |  |  |  |  |  | = |  |  |  |  |  |  |  |  |  | H44  |  |
| 16.6 mm                  |  |  |  |  |  |  | = |  |  |  |  |  |  |  |  |  | H46  |  |
| 17.35 mm                 |  |  |  |  |  |  | = |  |  |  |  |  |  |  |  |  | H48  |  |
| 18.1 mm                  |  |  |  |  |  |  | = |  |  |  |  |  |  |  |  |  | H50  |  |
| 18.85 mm                 |  |  |  |  |  |  | = |  |  |  |  |  |  |  |  |  | H52  |  |
| 19.6 mm                  |  |  |  |  |  |  | = |  |  |  |  |  |  |  |  |  | H55  |  |
| 22.6 mm                  |  |  |  |  |  |  | = |  |  |  |  |  |  |  |  |  | H57  |  |
| <b>Actuator diameter</b> |  |  |  |  |  |  |   |  |  |  |  |  |  |  |  |  |  |  <b>3</b> |
| 6.5 mm                   |  |  |  |  |  |  | = |  |  |  |  |  |  |  |  |  |  | D09  |
| 6.6 mm                   |  |  |  |  |  |  | = |  |  |  |  |  |  |  |  |  |  | D10  |
| 9.6 mm                   |  |  |  |  |  |  | = |  |  |  |  |  |  |  |  |  |  | D11  |
| <b>Contact material</b>  |  |  |  |  |  |  |   |  |  |  |  |  |  |  |  |  |  |  <b>4</b> |
| Silver                   |  |  |  |  |  |  | = |  |  |  |  |  |  |  |  |  |  | AG   |
| Gold                     |  |  |  |  |  |  | = |  |  |  |  |  |  |  |  |  |  | AU   |
| SnNi                     |  |  |  |  |  |  | = |  |  |  |  |  |  |  |  |  |  | SN   |
| <b>IP specification</b>  |  |  |  |  |  |  |   |  |  |  |  |  |  |  |  |  |  |  <b>5</b> |
| IP40                     |  |  |  |  |  |  | = |  |  |  |  |  |  |  |  |  |  | A  |
| IP67                     |  |  |  |  |  |  | = |  |  |  |  |  |  |  |  |  |  | B  |
| <b>Soldering type</b>    |  |  |  |  |  |  |   |  |  |  |  |  |  |  |  |  |  |  <b>6</b> |
| THT                      |  |  |  |  |  |  | = |  |  |  |  |  |  |  |  |  |  | T  |
| SMD                      |  |  |  |  |  |  | = |  |  |  |  |  |  |  |  |  |  | S  |
| <b>Terminal type</b>     |  |  |  |  |  |  |   |  |  |  |  |  |  |  |  |  |  |  <b>7</b> |
| Straight                 |  |  |  |  |  |  | = |  |  |  |  |  |  |  |  |  |  | 1  |
| J-Connector              |  |  |  |  |  |  | = |  |  |  |  |  |  |  |  |  |  | 3  |
| Gullwing                 |  |  |  |  |  |  | = |  |  |  |  |  |  |  |  |  |  | 4  |
| <b>Packaging</b>         |  |  |  |  |  |  |   |  |  |  |  |  |  |  |  |  |  |  <b>8</b> |
| None                     |  |  |  |  |  |  | = |  |  |  |  |  |  |  |  |  |  | 0  |
| Blister                  |  |  |  |  |  |  | = |  |  |  |  |  |  |  |  |  |  | A  |
| Bulk material            |  |  |  |  |  |  | = |  |  |  |  |  |  |  |  |  |  | B  |

**Variants**

| IP Protection Class Front Side | Terminal | Type                    | Overall height / Color | Order Number |
|--------------------------------|----------|-------------------------|------------------------|--------------|
| IP40                           | Gullwing | Short actuator          | -                      | 1241.1600.23 |
| IP40                           | J-Lead   | Short actuator          | -                      | 1241.1601.23 |
| IP40                           | Gullwing | Short actuator          | -                      | 1241.1600.11 |
| IP40                           | Gullwing | Short actuator          | -                      | 1241.1600.23 |
| IP40                           | Gullwing | Long actuator           | -                      | 1241.1612.11 |
| IP40                           | Gullwing | Long actuator           | -                      | 1241.1612.23 |
| IP40                           | J-Lead   | Short actuator          | -                      | 1241.1601.11 |
| IP40                           | J-Lead   | Short actuator          | -                      | 1241.1601.23 |
| IP40                           | J-Lead   | Long actuator           | -                      | 1241.1613.11 |
| IP40                           | J-Lead   | Long actuator           | -                      | 1241.1613.23 |
| IP67                           | Gullwing | Short actuator          | -                      | 1241.1606.11 |
| IP67                           | Gullwing | Short actuator          | -                      | 1241.1606.23 |
| IP67                           | Gullwing | Long actuator           | -                      | 1241.1618.11 |
| IP67                           | Gullwing | Long actuator           | -                      | 1241.1618.23 |
| IP67                           | J-Lead   | Short actuator          | -                      | 1241.1607.11 |
| IP67                           | J-Lead   | Short actuator          | -                      | 1241.1607.23 |
| IP67                           | J-Lead   | Long actuator           | -                      | 1241.1619.11 |
| IP67                           | J-Lead   | Long actuator           | -                      | 1241.1619.23 |
| -                              | -        | Elongated button        | 8.50 mm / yellow       | 0862.8101    |
| -                              | -        | Elongated button        | 9.25 mm / orange       | 0862.8102    |
| -                              | -        | Elongated button        | 10.00 mm / red         | 0862.8103    |
| -                              | -        | Elongated button        | 10.75 mm / blue        | 0862.8104    |
| -                              | -        | Elongated button        | 11.50 mm / green       | 0862.8105    |
| -                              | -        | Elongated button        | 12.25 mm /grey         | 0862.8106    |
| -                              | -        | Elongated button        | 13.00 mm / black       | 0862.8107    |
| -                              | -        | Elongated button        | 13.75 mm / white       | 0862.8108    |
| -                              | -        | Second elongated button | -                      | 0862.8226    |

Availability for all products can be searched real-time: <https://www.schurter.com/en/info-center/support-tools/stock-check-distributors>

Additional elongated button for long actuators must be ordered separately

From 14:50 mm an additional (second) elongated button for intermediate sizes (h + 6 mm) is required. This must be ordered separately

| Packaging unit |                       |
|----------------|-----------------------|
|                | .xxxx.11 = (100 pcs.) |
|                | .xx1x.23 = (450 pcs.) |
|                | .xx0x.23 = (700 pcs.) |

## Looking for pricing, stock, or lifecycle information?

Click below to explore more details on WIN SOURCE:

 [View 1241.1618.23 on WIN SOURCE](#)

 [Schurter Inc. Information](#)

## Optimize Your Supply Chain with WIN SOURCE Solutions

-  Global Sourcing Solution
-  Obsolete Management
-  Cost Control Management
-  Shortage Management
-  Alternative Solution
-  Excess Inventory Management