



THE DATASHEET OF
1JS11





MEC's exclusive snap-on keycap in 10.4 mm total height. Optimized for use with foil overlays.

The 1JS keycaps are available in nine standard colours: 00 blue/02 green/03 grey/04 yellow/06 white/08 red/09 black/11 transparent/16 frosted white.

In combination with the switch the 1JS becomes the lowest illuminated keycap possible; especially designed for foil overlays and featuring soft edges for extended foil overlay lifetime. The 1JS 11 transparent/16 frosted white has superior illumination potential when combined with the newest Multimec 5G switch. Illumination can be either surface mount or through-hole. Cap retention is optimized with an innovative "snap-on" system.



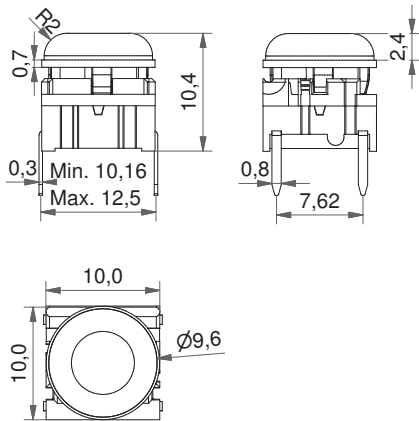
Distributor:

Technical Data:

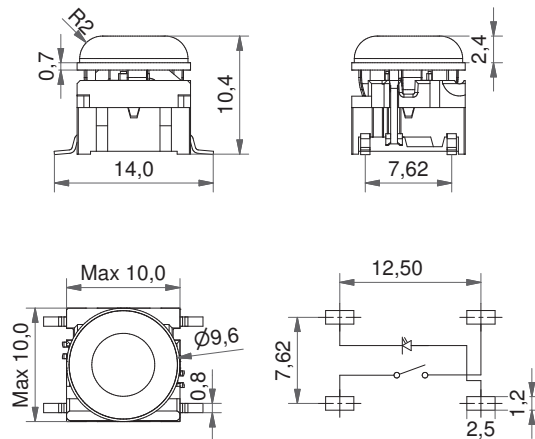
- through-hole or SMD
- 50mA/24VDC
- single pole/momentary
- 10.000.000 operations lifetime
- IP67 sealing
- temperature range:
LED: -40/+85°C
high temp: -40/+160°C
keycap: -40/+65°C
- actuation force: 2,0, 3,5, 6,5 N



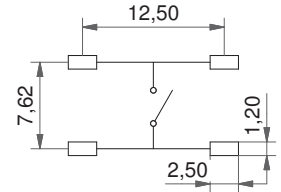
Dimensions (through-hole)



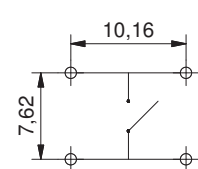
Dimensions (SMD w/LED)



PCB Layout SMD



PCB Layout TH



HOW TO ORDER

| | | | | | | | |
|---------------|-------------------|------------------------|-------------------|---|--------------|--|--------------------|
| 5 G | | | | + | 1 J S | | |
| Switch | Mounting | Actuation force | LED | | Cap | | Colour code |
| | TH9 through-hole | 20 | 01 blue | | | | 11 transparent |
| | SH9 surface mount | 35 | 22 green | | | | 16 frosted white |
| | | 65 | 42 yellow | | | | |
| | | | 61 white | | | | |
| | | | 82 red | | | | |
| | | | 2242 green/yellow | | | | |
| | | | 8222 red/green | | | | |

| | | | | | | |
|---------------|-------------------|------------------------|---|------------------|--|--------------------|
| 5 G | | | + | 1 J S | | |
| Switch | Mounting | Actuation force | | Cap | | Colour code |
| | TH9 through-hole | 20 | | 1JS solid colour | | 00 blue |
| | SH9 surface mount | 35 | | | | 02 green |
| | | 65 | | | | 03 grey |
| | | | | | | 04 yellow |
| | | | | | | 06 white |
| | | | | | | 08 red |
| | | | | | | 09 black |

Dimensions (mm) Unless otherwise specified, all tolerances +/- 0,2


Ordering example: 5GTH935+1JS08 without illumination
5GTH93501+1JS16 with illumination

See colour codes on our website: www.mec.dk

For product updates and/or changes of specifications please see www.mec.dk

Looking for pricing, stock, or lifecycle information?

Click below to explore more details on WIN SOURCE:

 [View 1JS11](#) on WIN SOURCE

 [MEC Switches](#) Information

Optimize Your Supply Chain with WIN SOURCE Solutions

-  Global Sourcing Solution
-  Obsolete Management
-  Cost Control Management
-  Shortage Management
-  Alternative Solution
-  Excess Inventory Management