



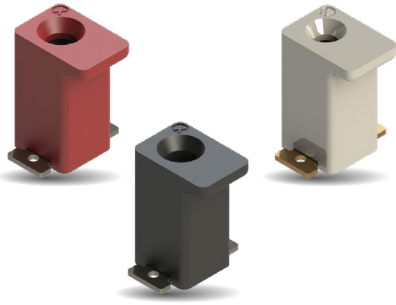
THE DATASHEET OF
009296001603506



POKE-HOME - 1 WAY VERTICAL TOP ENTRY 18-22 AWG: 9296-600



General Information



Vertical poke-home connectors were introduced to the market several years ago to provide a reliable, yet cost-effective, discrete wire-to-board termination in vertical applications. They were designed to bridge the gap between inconsistent and difficult hand soldering of wires and costly 2-piece connector systems in low pin count applications.

The 9296-600 connector is specifically designed to support 18 to 22 AWG solid or stranded wire terminations used in power supplies, LED drivers and industrial control products where board space is limited. This connector offers a rugged single-beam contact that securely grips and holds the wire in a package size that is 23% smaller than previous versions.

APPLICATIONS

- Replace inconsistent hand soldered perpendicular wire terminations onto PCB's in:
 - ▶ Power Supplies
 - ▶ LED Drivers
 - ▶ Industrial/Motor Controls
- Offer a simple and cost reduced solution to existing 2-Piece connector systems
- Application Notes: Refer to 201-01-211
- Product Specification: Refer to 201-01-210

FEATURES AND BENEFITS

- Pre-Plated phosphor bronze contact material provides excellent spring performance with high fatigue and corrosion resistance
- The single stamped and formed box contact maximizes board attachment and wire capture strength
- Integral molded in flange provides a generous vacuum pick-up point for automated SMT placement
- UL approved color range to match individual wires for easy and accurate final product assembly

ELECTRICAL

- Current Rating: See Below
- Voltage Rating: 600 VAC (RMS) or DC Equivalent

ENVIRONMENTAL

- Operating Temperature: -40°C to +130°C
- Storage Temperature: -40°C to +70°C

MECHANICAL

- Insulator Material: Glass-Filled Nylon 46, UL94 V0
- Contact Material: Phosphor Bronze
- Plating: Lead-Free Tin Over Nickel
- Durability: 3 Cycles

HOW TO ORDER

| | | | | | |
|-------------------------|-------------|-------------|-----------------------------------|---|------------------|
| 00 | 9296 | 001 | 603 | X | 06 |
| Prefix | Series | No. of Ways | Description | Plating | Plating |
| Wire to Board Connector | | 001 = 1 | 603 = 18-22 AWG Solid or Stranded | 2 = Brown 3 = Blue 4 = Yellow 5 = Red 6 = Green 7 = Orange 8 = Black 9 = White | 006 = Tin Plated |



SALES DRAWINGS
CLICK TO DOWNLOAD

589296001000014: Only for 18 AWG Solid

CURRENT RATING

| 18 AWG | 20 AWG | 22 AWG |
|--------|--------|--------|
| 8A | 7A | 6A |

Safety Standards: UL 1977-File #E90723, CSA C22.2 NO. 182.3



Looking for pricing, stock, or lifecycle information?

Click below to explore more details on WIN SOURCE:

 [View 009296001603506 on WIN SOURCE](#)

 [AVX Corp/Kyocera Corp](#) Information

Optimize Your Supply Chain with WIN SOURCE Solutions

-  Global Sourcing Solution
-  Obsolete Management
-  Cost Control Management
-  Shortage Management
-  Alternative Solution
-  Excess Inventory Management