



**THE DATASHEET OF  
Y1011U2C203NQ**



# Y Series

## 4, 5 & 6 Tumbler Switchlocks



Patent No. 4,639,562

### Agency Approvals

| Agency         | Agency File Number |
|----------------|--------------------|
| c <b>UL</b> us | E42363             |

### Specifications

|                           |  |
|---------------------------|--|
| <b>Contact Ratings</b>    | Q contact material: 4 amps @ 125 V AC or 28 V DC; 2 amps @ 250 V AC (UL/CSA). See page 8 for additional ratings. |
| <b>Contact Resistance</b> | Below 10 m Ω typ. initial @ 2-4 V DC, 100 mA, for both silver and gold plated contacts.                          |

### Electrical Characteristics

|                              |   |
|------------------------------|---|
| <b>Electrical Life</b>       | 10,000 make-and-break cycles at full load.  |
| <b>Insulation Resistance</b> | 10 <sup>9</sup> Ω min.  |
| <b>Dielectric Strength</b>   | 1,000 Vrms min. @ sea level.  |
| <b>Indexing</b>              | 45° or 90°, 2-4 positions (4&5 tumbler switchlocks). 45°, 3 positions; or 90°, 2 positions (6 tumbler tubular switchlocks). Other functions available, consult Customer Service Center. |
| <b>Static Resistance</b>     | Anti-static models exceed 20 KV DC static resistance @ sea level, lock body to terminals.   |
| <b>Mounting Torque</b>       | 10 in./lbs.; 14 in./lbs max.  |
| <b>Operating Temperature</b> | -30°C to 85°C   |

### Description

The Y series 4, 5 & 6 tumbler switchlock is an anti-static switch, exceeding 20 KV DC static resistance. Typically used in cash registers, point-of-sale terminals and computers, the high-performing Y series is also available in momentary models and with wire leads and/or harnesses.

### Features & Benefits

- Anti-static switch—exceeds 20 KV DC static resistance
- Wire leads and harnesses available
- Momentary models available

### Applications

- Point-of-sale terminals
- Computers
- Cash registers

### Materials

|                               |   |
|-------------------------------|---|
| <b>Lock</b>                   | Zinc alloy with stainless steel facing, std. (4 & 5 tumbler lock and 6 tumbler tubular lock).   |
| <b>Keys</b>                   | Two nickel plated brass keys, with code number, std. (4 and 5 tumbler lock). Two die cast chrome plated zinc alloy keys, std. (6 tumbler lock). |
| <b>Switch Housing</b>         | Glass filled polyester (UL 94V-0).  |
| <b>Contacts and Terminals</b> | Q contact material: Copper, silver plated. See page 8 for additional contact materials.   |
| <b>Mounting Nut</b>           | Zinc Alloy  |
| <b>Mounting Clip</b>          | Steel, zinc plated  |
| <b>Dress Nut</b>              | Brass, nickel plated  |
| <b>Terminal Seal</b>          | Epoxy   |

#### Notes:

Any models supplied with Q, B or G contact material are RoHS compliant. Specifications and materials listed above are for switchlocks with standard options. For information on specific and custom switchlocks, consult Customer Service Center.

# Y Series

## 4, 5 & 6 Tumbler Switchlocks



### Ordering Number

To order, simply select desired option from each category and place in the appropriate box. For additional options not shown in catalog, consult Customer Service Center.

**YXXXXX - X - X - X - XX - X - X - X**

|   |  |  |   |
|---|--|--|---|
| <p><b>Switch and Lock Function</b></p> <p><b>Y10013:</b> SP, 45°, keypull pos. 1<br/> <b>Y1011U:</b> SP, 90°, keypull pos. 1 &amp; 2<br/> <b>Y1001U:</b> SP, 45°, keypull pos. 1 &amp; 3<br/> <b>Y2001U:</b> DP, 45°, keypull pos. 1 &amp; 3<br/> <b>Y10082:</b> SP, 45°, keypull pos. 1<br/> <b>Y20082:</b> DP, 45°, keypull pos. 1<br/> <b>Y100AA:</b> SP, 45°, keypull pos. 1, 2 &amp; 3<br/> <b>Y200AA:</b> DP, 45°, keypull pos. 1, 2 &amp; 3<br/> <b>Y100AB:</b> SP, 45°, keypull pos. 1, 2, 3 &amp; 4<br/> <b>Y200AB:</b> DP, 45°, keypull pos. 1, 2, 3 &amp; 4<br/> <b>Y10113:</b> SP, 90°, keypull pos. 1<br/> <b>Y20113:</b> DP, 90°, keypull pos. 1<br/> <b>Y1011C:</b> SP, 90°, keypull pos.2<br/> <b>Y2011C:</b> DP, 90°, keypull pos. 2<br/> <b>Y2011U:</b> DP, 90°, keypull pos. 1 &amp; 2<br/> <b>Y14173:</b> SP, 90°, keypull pos. 1<br/> <b>Y1417U:</b> SP, 90°, keypull pos. 1,2 &amp; 3<br/> <b>Y10812:</b> SP, 45°, mom., keypull pos. 1<br/> <b>Y20812:</b> DP, 45°, mom., keypull pos. 1<br/> <b>Y19073:</b> SP w/common, 90°, keypull pos. 1<br/> <b>Y1907U:</b> SP w/common, 90°, keypull pos. 1, 2 &amp; 3<br/> <b>Y1900S:</b> SP w/common, 90°, keypull pos. 1, 2, 3 &amp; 4</p> <p><b>Keying</b></p> <p><b>2:</b> Two nickel plated brass keys (4 &amp;5 tumbler) or two die cast zinc alloy keys withchrome plating (6 tumbler)<br/> <b>6:</b> Two nickel plated brass keys with code on lock face</p> | <p><b>Lock Finish</b></p> <p><b>2:</b> Stainless steel facing<br/> <b>8:</b> Gloss black facing<br/> <b>F:</b> Polished nickel facing</p> <p><b>Lock Type</b></p> <p><b>A:</b> 4 Tumbler lock (YX08 models)<br/> <b>C:</b> 4 Tumbler lock with detent<br/> <b>V:</b> 6 Tumbler tubular lock<br/> <b>B:</b> 5 Tumbler lock<br/> <b>R:</b> 4 Tumbler lock with detent and anti-Static switch<br/> <b>W:</b> 6 Tumbler tubular lock with anti-Static switch</p> | <p><b>Mounting/Lock Style</b></p> <p><b>N:</b> With nut<br/> <b>D:</b> With clip<br/> <b>L:</b> With removable dress nut and latch pawl<br/> <b>R:</b> With removable dress nut</p> <p><b>Terminations</b></p> <p><b>03:</b> Solder lug with hole<br/> <b>01:</b> Solder lug with notch<br/> <b>02:</b> PC Thru-hole<br/> <b>07:</b> Solder lug with hole (Y190XX models only)<br/> <b>WC:</b> Wire lead</p> | <p><b>Contact Material</b></p> <p><b>Q:</b> Silver<br/> <b>B:</b> Gold<br/> <b>G:</b> Gold or silver</p> <p><b>Seal</b></p> <p><b>None:</b> No seal<br/> <b>E:</b> Epoxy seal</p> |
|---|--|--|---|

# Y Series

## 4, 5 & 6 Tumbler Switchlocks



### Switch and Lock Function Single & Double Pole Switches

| No. Tumblers | No. Poles | Model No.         | Connected Terminals |                 |                 |                 | Key Pull Positions   | Lock Configuration | Indexing |     |
|--------------|-----------|-------------------|---------------------|-----------------|-----------------|-----------------|----------------------|--------------------|----------|-----|
|              |           |                   | POS. 1              | POS. 2          | POS. 3          | POS. 4          |                      |                    |          |     |
| 4, 5 & 6     | SP        | Y10013            | 8-1                 | 1-2             | 2-3             | -               | Position 1           |                    | 45°      |     |
| 4, 5 & 6     | SP, DP    | Y10001U<br>Y2001U | 8-1<br>8-1, 4-5     | 1-2<br>1-2, 5-6 | 2-3<br>2-3, 6-7 | -               | Position 1 & 3       |                    |          |     |
| 4 & 5        | SP, DP    | Y10082<br>Y20082  | 8-1<br>8-1, 4-5     | 1-2<br>1-2, 5-6 | 7-8<br>7-8, 3-4 | -               | Position 1           |                    |          |     |
| 4            | SP, DP    | Y100AA<br>Y200AA  | 8-1<br>8-1, 4-5     | 1-2<br>1-2, 5-6 | 7-8<br>7-8, 3-4 | -               | Position 1, 2 & 3    |                    |          |     |
| 4            | SP, DP    | Y100AB<br>Y200AB  | 8-1<br>8-1, 4-5     | 1-2<br>1-2, 5-6 | 2-3<br>2-3, 6-7 | 3-4<br>3-4, 7-8 | Position 1, 2, 3 & 4 |                    |          |     |
| 4, 5 & 6     | SP, DP    | Y10113<br>Y20113  | 8-1<br>8-1, 4-5     | 1-3<br>1-3, 5-7 | -               | -               | Position 1           |                    |          |     |
| 4 & 5        | SP, DP    | Y1011C<br>Y2011C  | 8-1<br>8-1, 4-5     | 1-3<br>1-3, 5-7 | -               | -               | Position 2           |                    |          |     |
| 4, 5 & 6     | SP, DP    | Y1011U<br>Y2011U  | 8-1<br>8-1, 4-5     | 1-3<br>1-3, 5-7 | -               | -               | Position 1 & 2       |                    |          | 90° |
| 4            | SP        | Y14173            | 7-1                 | 1-3             | 6-7             | -               | Position 1           |                    |          |     |
| 4            | SP        | Y1417U            | 7-1                 | 1-3             | 6-7             | -               | Position 1, 2 & 3    |                    |          |     |

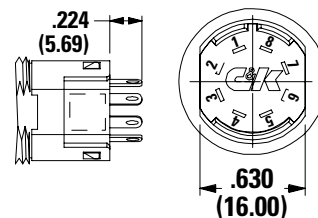
### Single & Double Pole Momentary Switches

| No. Tumblers | No. Poles | Model No.        | Connected Terminals |                 |        |        | Key Pull Positions | Lock Configuration | Indexing |
|--------------|-----------|------------------|---------------------|-----------------|--------|--------|--------------------|--------------------|----------|
|              |           |                  | POS. 1              | POS. 2          | POS. 3 | POS. 4 |                    |                    |          |
| 4            | SP, DP    | Y10812<br>Y20812 | 8-1<br>8-1, 4-5     | 1-2<br>1-2, 5-6 | -      | -      | Position 1         |                    | 45° Mom. |

#### Legend

- ▲ = Momentary Positions (45°)
- = Detent Positions (45° or 90°)
- ⊙ = Key pull possible in these positions.
- ↑ = Stop Positions

#### Terminal Numbers inches (mm)



Notes: Terminal numbers molded on bottom of housing. All models with all options when ordered with 'G' or 'Q' contact material.

# Y Series

## 4, 5 & 6 Tumbler Switchlocks



### Single Pole Switches with Common

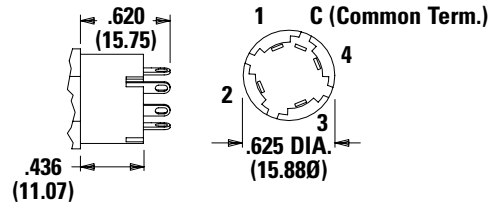
| No. Tumblers | No. Poles | Model No. | Connected Terminals |        |        |        | Key Pull Positions   | Lock Configuration | Indexing |
|--------------|-----------|-----------|---------------------|--------|--------|--------|----------------------|--------------------|----------|
|              |           |           | POS. 1              | POS. 2 | POS. 3 | POS. 4 |                      |                    |          |
| 4            | SP        | Y19073    | C-1                 | C-2    | C-4    | -      | Position 1           | POS. 1<br>         | 90°      |
|              |           | Y1907U    | C-1                 | C-2    | C-4    | -      | Position 1, 2 & 3    | POS. 1<br>         |          |
|              |           | Y1900S    | C-1                 | C-2    | C-3    | C-4    | Position 1, 2, 3 & 4 | POS. 1<br>         |          |

### Legend

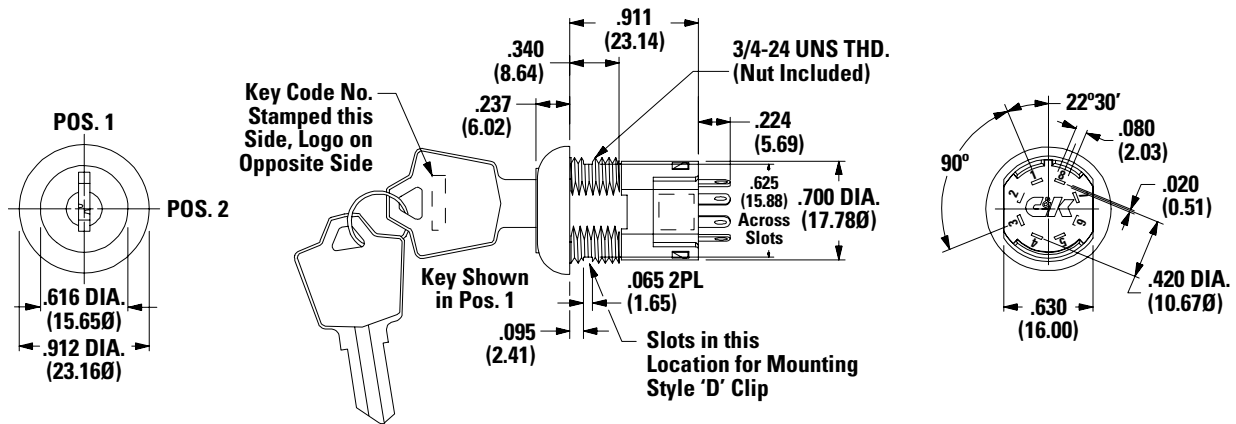
- = Detent Positions (45° or 90°)
- ⊙ = Key pull possible in these positions.
- ⦿ = Stop Positions

Note: Terminal numbers marked on insulator. All models C&K® us with all options when ordered with 'G' or 'Q' contact material. Epoxy seal not available. Removable dress nut not available with any Y190XX models.

### Terminal Numbers inches (mm)

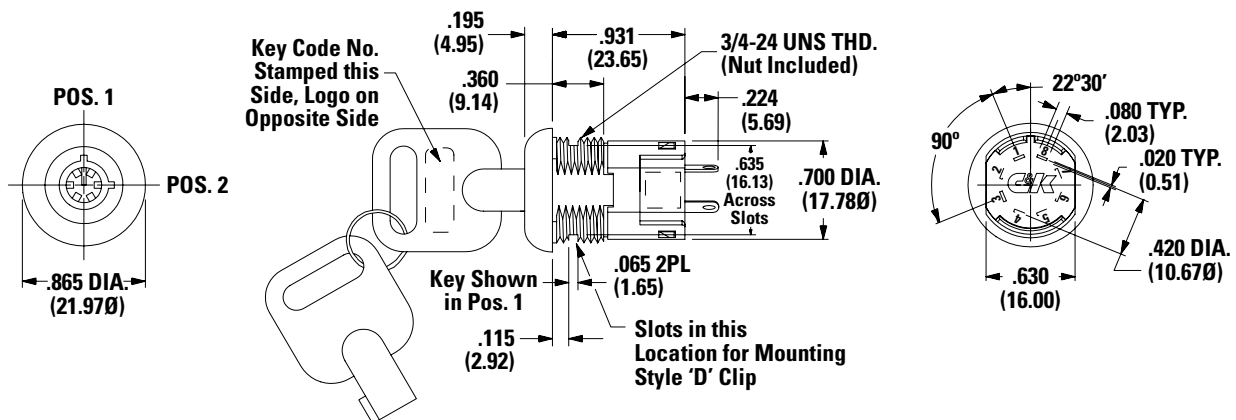


### 4 & 5 Tumbler inches (mm)



Part number shown: Y100132C203NQ

### 6 Tumbler inches (mm)



Part number shown: Y1011U2V203NQ

# Y Series

## 4, 5 & 6 Tumbler Switchlocks



### Available Option Combinations

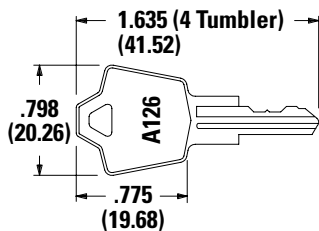
| Models | Lock Types |   |   |   |   |   | Terminations |    |    |    |    | Mounting / Lock Styles |   |   |   |
|--------|------------|---|---|---|---|---|--------------|----|----|----|----|------------------------|---|---|---|
|        | A          | B | C | R | V | W | 01           | 02 | 03 | 07 | WC | D                      | L | N | R |
| YX0013 |            | • | • |   | • | • | •            | •  | •  |    | •  | •                      |   | • | • |
| YX001U |            | • | • | • | • | • | •            | •  | •  |    | •  | •                      | • | • | • |
| YX0082 |            | • | • | • |   |   | •            | •  | •  |    | •  | •                      |   | • |   |
| YX00AX |            |   | • | • |   |   | •            | •  | •  |    | •  | •                      |   | • | • |
| YX0113 |            | • | • | • | • | • | •            | •  | •  |    | •  | •                      |   | • | • |
| YX011C |            | • | • | • |   |   | •            | •  | •  |    | •  | •                      |   | • | • |
| YX011U |            | • | • | • | • | • | •            | •  | •  |    | •  | •                      | • | • | • |
| Y141XX |            |   | • | • |   |   | •            | •  | •  |    | •  | •                      |   | • | • |
| YX0812 | •          |   |   |   |   |   | •            | •  | •  |    | •  | •                      |   | • |   |
| Y190XX |            |   | • | • |   |   |              | •  |    | •  | •  | •                      |   | • |   |

### Keying

| Option Code | Lock Types   | Code No. on Key | Code No. on Lock |
|-------------|--|-----------------|------------------|
| 2           | 2 nickel plated brass keys (4 & 5 tumbler) or 2 die cast chrome plated zinc alloy keys (6 tumbler) | Yes             | No               |
| 6           | 2 nickel plated brass keys, 4 & 5 tumbler only   | Yes             | Yes              |

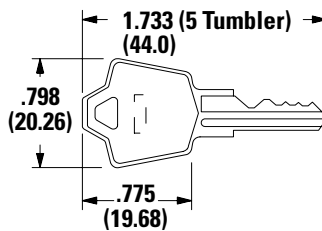
**Notes:**  
All orders keyed alike, standard. For more than one key code, master keying, replacement keys, or other special features, consult Customer Service Center.

#### Nickel Plated Brass Key inches (mm)



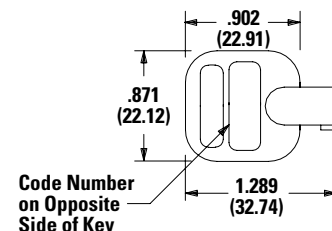
Keys Part Number: 115140126

#### Nickel Plated Brass Key inches (mm)



Keys Part Number: 115441001

#### Chrome Plated Zinc Alloy Key inches (mm)

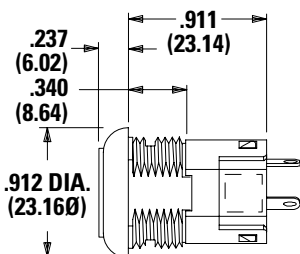


Keys Part Number: 363C1AAAA

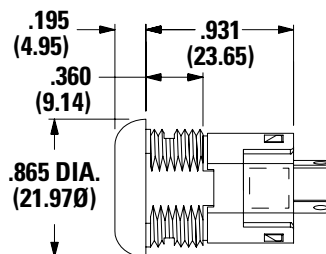
**Notes:**  
Keys are available separately, see page 9. Key head shape subject to change without notice.

### Short Anti-Static Lock Types

#### C 4 Tumbler Lock with Detent B 5 Tumbler Lock

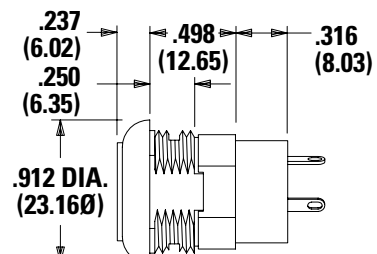


#### V 6 Tumbler Tubular Lock



Available with Lock Finish 'Z' only

#### A 4 Tumbler Lock (Momentary Modules Only)



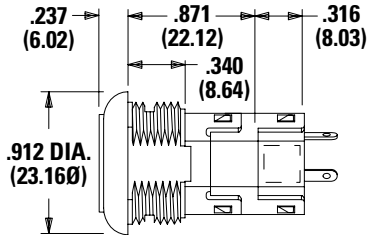
# Y Series

## 4, 5 & 6 Tumbler Switchlocks

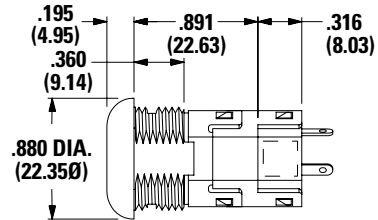


### Lock Type

#### R 4 Tumbler Lock with Detent and Short Anti-Static Switch



#### W 6 Tumbler Tubular Lock with Anti-Static Switch



Available with Lock Finish 'Z' only

**Notes:**

For available option combinations, see page 8. U.S. Pat. No. 4,639,562 Exceeds 20 KV DC static resistance @ sea level, lock body to terminals.

### Lock Finish

#### 2 Stainless Steel

#### 8 Gloss Black

#### F Polished Nickel



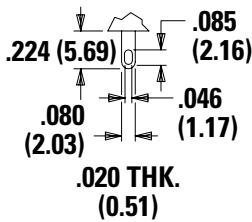
Available with Lock Types 'V' & 'W' only.

**Notes:**

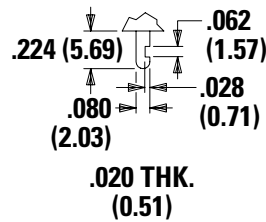
For available option combinations, see page 8.

### Terminations

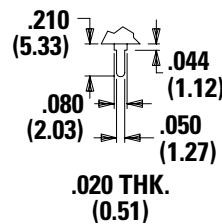
#### 03 Solder Lug with Hole



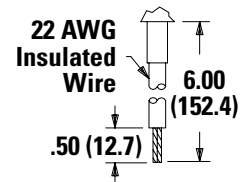
#### 01 Solder Lug with Notch



#### 02 PC Thru-hole



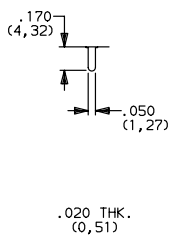
#### WC Wire Lead



Black wire standard. other colors and lengths available, consult Customer Service Center. UL style 1015.

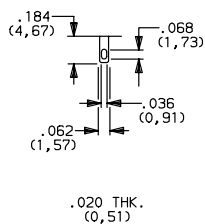
All Models Except Y190

#### 02 PC Thru-hole

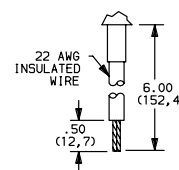


Y190 Model Only

#### 07 Solder Lug with Hole

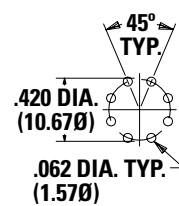


#### WC Wire Lead



Black wire standard. other colors and lengths available, consult Customer Service Center. UL style 1015.

#### PC Mounting



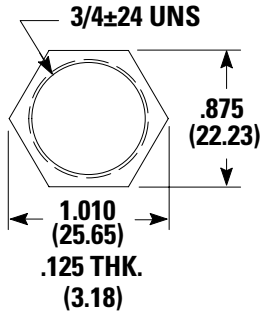
# Y Series

## 4, 5 & 6 Tumbler Switchlocks

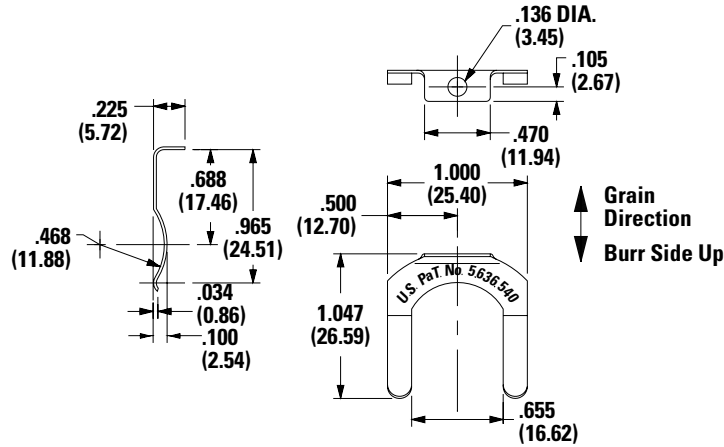


### Mounting/Lock Style

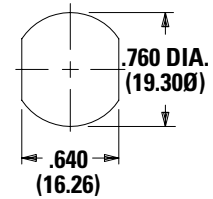
**N With Nut**  
Nut part number: 937C00000



**D With Clip**  
Clip Part Number: 906B00000

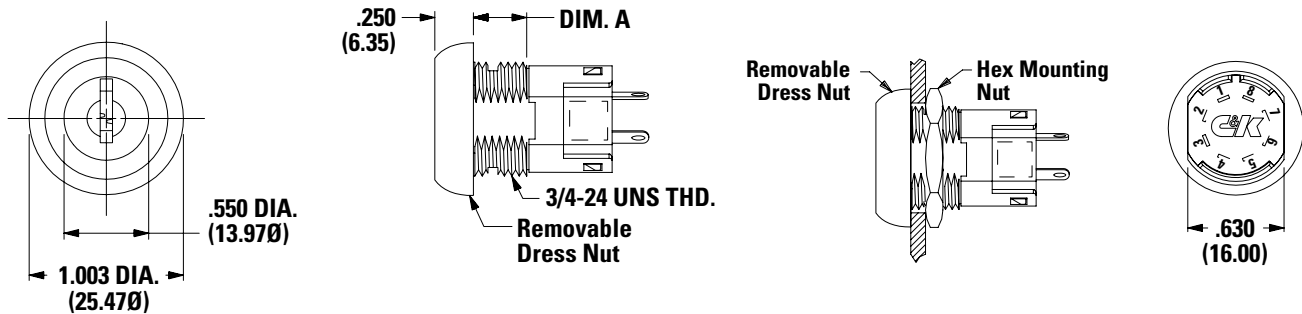


**Panel Mounting**



| Option Code | Mounting Style | Panel Thickness |
|-------------|----------------|-----------------|
| N           | With nut       | 0.085 - 0.105   |
| D           | With clip      | (2.16 - 2.67)   |

### R Removable Dress Nut

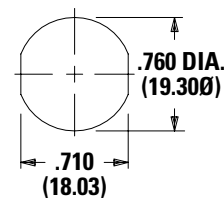


### Typical Installation

Install hex nut with enough clearance to allow for dress nut and panel. Place switch through cutout in rear of panel. Install and tighten dress nut by hand, then tighten hex nut. Always tighten assembly with back of panel hex nut to avoid damaging front of panel.

**Note:** Removable dress nut not available with Y1900A or Y100AA model options.

### Panel Mounting



### Lock Dimensions

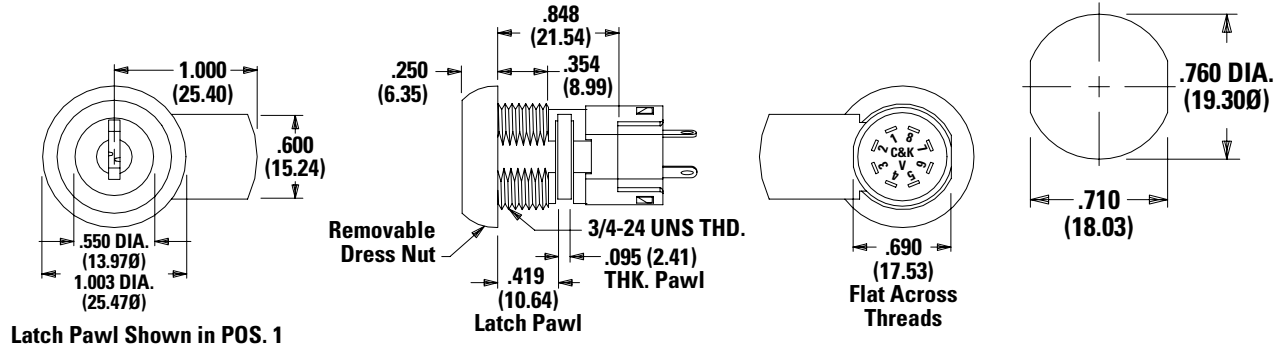
| Lock Types | 'A'          |
|------------|--------------|
| A, N       | 0.270 (6.68) |
| C, R       | 0.360 (9.14) |

# Y Series

## 4, 5 & 6 Tumbler Switchlocks



### L Removable Dress Nut with Latch Pawl



Latch Pawl Shown in POS. 1

### Mounting Information (All Models)

#### Panel Thickness

| Mounting Styles | A, B Lock Types             | C, R Lock Types   | V, W Lock Types             |
|-----------------|-----------------------------|-------------------|-----------------------------|
| D               | 0.065 - 0.085 (1.65 - 2.16) |                   | 0.085 - 0.105 (2.16 - 2.67) |
| N               | 0.105 (2.67) max.           | 0.195 (4.95) max. | 0.215 (5.46) max.           |
| L               | 0.215 (5.46) max.           |                   | -                           |
| R               | 0.125 (3.18) max.           | 0.215 (5.46) max. | -                           |

#### Available Option Combinations

| Mounting Styles | Lock Finishes |   |   | Lock Types |   |   |   |   |   |
|-----------------|---------------|---|---|------------|---|---|---|---|---|
|                 | 2             | 8 | F | A          | B | C | R | V | W |
| D               | •             | • | • | •          | • | • | • | • | • |
| N               | •             | • | • | •          | • | • | • | • | • |
| L               |               | • | • | •          |   | • | • |   |   |
| R               |               | • | • |            |   | • | • |   |   |

### Contact Material

| Option Code | RoHS Compliant <sup>1</sup> | RoHS Compatible <sup>1</sup> | Contact and Terminal Material |                                  | Rating   |
|-------------|-----------------------------|------------------------------|-------------------------------|----------------------------------|--|
| Q           | Yes                         | Yes                          | Silver <sup>2</sup>           | Power                            | 4 amps @ 125 V AC or 28 V DC; 2 amps @ 250 V AC (UL/CSA).                                    |
| B           | Yes                         | Yes                          | Gold <sup>1</sup>             | Low Level / Dry Circuit          | 0.4 VA max. @ 20 V AC or DC max.   |
| G           | Yes                         | Yes                          | Gold Silver <sup>3</sup>      | Low Level / Dry Circuit or Power | 0.4 VA max. @ 20 V AC or DC max. or 4 amps @ 125 V AC or 28 V DC; 2 amps @ 250 V AC (UL/CSA) |

Note: See Technical Data section of this catalog for RoHS compliant and compatible definitions and specifications.

<sup>1</sup> Contacts & Terminals: Copper, with gold plate over nickel plate.

<sup>2</sup> Contacts & Terminals: Copper, silver plated (std. with all termination options).

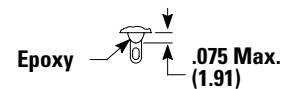
<sup>3</sup> Contacts & Terminals: Copper, with gold plate over silver plate.

All models with all options when ordered with 'G' or 'Q' contact material.

### Seal

#### None No Seal

#### E Epoxy Seal



# Y Series

## 4, 5 & 6 Tumbler Switchlocks



### Available Hardware



**Key Code:** A126  
**4 Tumbler**  
**Part Number:** (One Key) 115140126  
**Material:** Brass  
**Finish:** Nickel plate

**Key Code:** D001  
**5 Tumbler**  
**Part Number:** (One Key) 115441001  
**Material:** Brass  
**Finish:** Nickel plate





**Key Code:** AAAA  
**Part Number:** (One Key) 363C1AAAA  
**Material:** Zinc alloy  
**Finish:** Chrome plate

**Disclaimer Notice** - Information furnished is believed to be accurate and reliable. However, users should independently evaluate the suitability of and test each product selected for their own applications. Littelfuse products are not designed for, and may not be used in, all applications. Read complete Disclaimer Notice at <http://www.littelfuse.com/disclaimer-electronics>.

## Looking for pricing, stock, or lifecycle information?

Click below to explore more details on WIN SOURCE:

-  [View Y1011U2C203NQ on WIN SOURCE](#)
-  [C&K Components Information](#)

## Optimize Your Supply Chain with WIN SOURCE Solutions

-  Global Sourcing Solution
-  Obsolete Management
-  Cost Control Management
-  Shortage Management
-  Alternative Solution
-  Excess Inventory Management