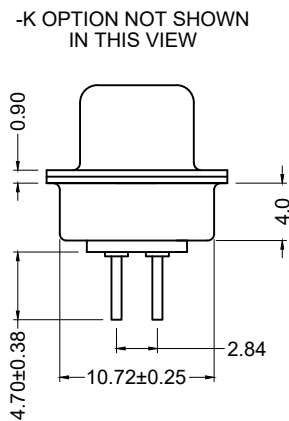
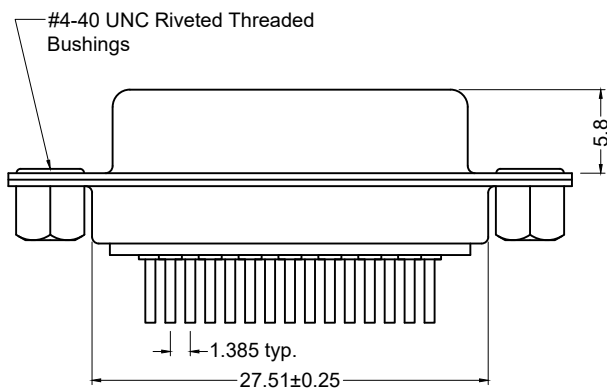
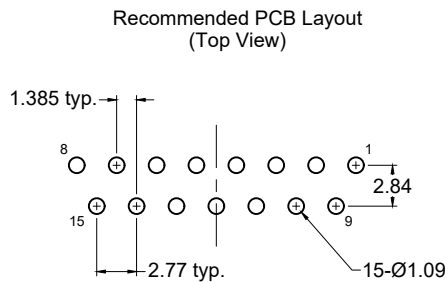
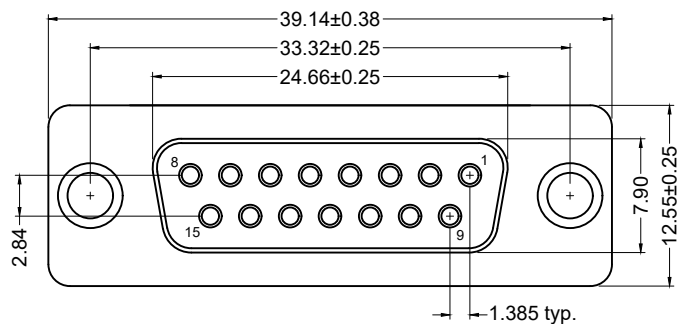




**THE DATASHEET OF  
K85X-AD-15S-K**





**Material And Finish**

Shell: Steel Material, Nickel Plated  
 Insert: PBT Thermoplastic,  
 Black Color, 30%  
 Glass Filled, UL 94V-0 Rated

Contact Material:  
 Socket - brass

Contact Plating:  
 Standard:  
 Gold flash on mating end,  
 tin on termination end, with  
 entire contact nickel underplated

-15 Option:  
 15u" gold on mating end,  
 tin on termination end, with  
 entire contact nickel underplated

-30 Option:  
 30u" gold on mating end,  
 tin on termination end, with  
 entire contact nickel underplated

**Electrical Specifications**

Contact Current Rating: 2A

Rated Voltage: 30V RMS

Dielectric Withstanding Voltage:  
 1000V (rms) AC for 1 minute

Insulation Resistance:  
 more than 1000 Megohm  
 at 500V DC

Dielectric Withstanding Voltage-  
 1000 VAC rms for 1 minute

Contact Resistance:  
 13 milliohm max.

Operating Temperature  
 -55°C to +105°C

**Ordering Information**

Part Number	Contact Area Plating Finish
K85X-AD-15S-K	Gold Flash (standard)
K85X-AD-15S-K15	15u" Gold (15 option)
K85X-AD-15S-K30	30u" Gold (30 option)

**Tolerances**

X.X ± 0.25  
 X.XX ± 0.15  
 Unless Stated  
 Otherwise



REV.	DATE	DESCRIPTION	REV. BY	CHK. BY	DRAWN BY	DATE
A1	08/13/07	New Drawing	A. Frederick	H. MA	A. Frederick	08/01/07
A2	1/8/08	ECO # 07-052	WILL H.	H. MA		
A3	12/31/17	ECO #17-030	J. Elbanna	C. Furumasu		
A4	09/22/25	ECO #25-061	K.Wang	C.Kelleher		

**K85X-AD-15S-K**

Vertical PCB Mount D-Sub, RoHS Compliant

15 Pin Female with Riveted Threaded Bushings



## Looking for pricing, stock, or lifecycle information?

Click below to explore more details on WIN SOURCE:

 [View K85X-AD-15S-K on WIN SOURCE](#)

 [Kycon, Inc. Information](#)

## Optimize Your Supply Chain with WIN SOURCE Solutions

-  Global Sourcing Solution
-  Obsolete Management
-  Cost Control Management
-  Shortage Management
-  Alternative Solution
-  Excess Inventory Management