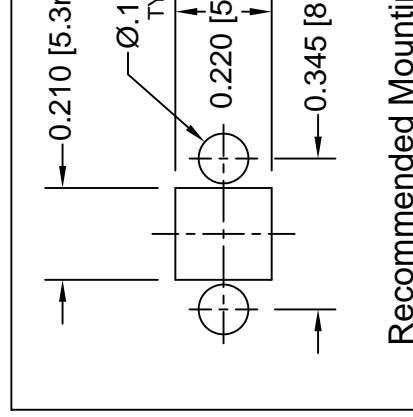
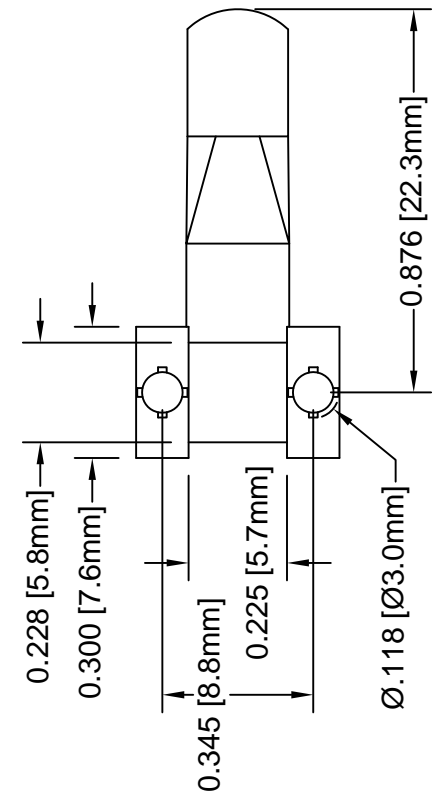
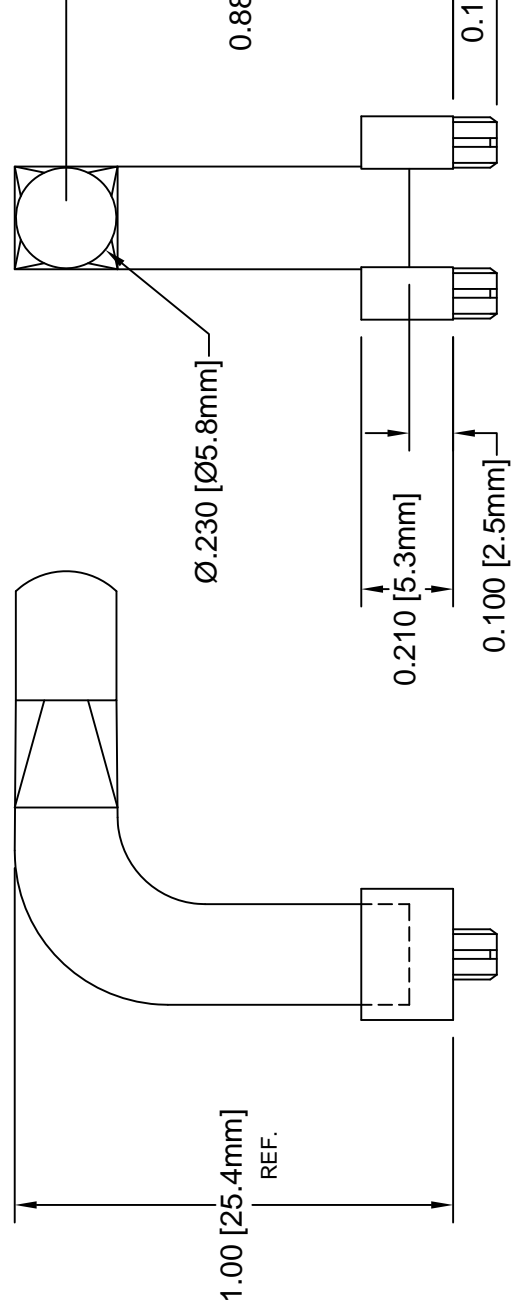




# THE DATASHEET OF LP5-1000



REV.	
C	Engineering Update
D	Added Color Options



Recommended Mounting

STANDARD TOLERANCES (UNLESS OTHERWISE SPECIFIED)		ANGULAR		SURFACE	
DECIMALS	±.1	X°		X°	
.X	±.1				
.XX	±.01				
.XXX	±.005				
DESIGNED BY:	DATE: 06/1				
Shane Irving	DATE: 07/2				
CHECKED BY:	DATE:				
M. Chen					

2. MATERIAL: POLYCARBONATE 94V-0 CLEAR.
1. GENERAL SPECIFICATIONS: BIVAR MOLDED COMPONENT SPECIFICATION BV00-E101.

OTHER AVAILABLE COLORS  
 \* SEE TABLE FOR ORDERING INFORMATION

**LP5-1000**

RIGID LIGHT PIPE  
 SERIES

COLOR	Order Code
BLUE	BE
BLACK	BK
GREEN	GN
GRAY	GY
RED	RD
YELLOW	YW

NOTE: LEAVE ORDER CODE BLANK  
 IF NO COLOR IS DESIRED.

STANDARD TOLERANCES  
 ( UNLESS OTHERWISE SPECIFIED )

DECIMALS

ANGU



DESIGNED:

**K. Aukshunas**

CHECKED:

**J. Chiang**

DATE:

**01/2**

DATE:

**01/2**



3. PARTS ARE DYED TO COLOR UPON REQUEST.

REV.

SEE SHEET #1

## Looking for pricing, stock, or lifecycle information?

Click below to explore more details on WIN SOURCE:

-  [View LP5-1000 on WIN SOURCE](#)
-  [Bivar Inc. Information](#)

## Optimize Your Supply Chain with WIN SOURCE Solutions

-  Global Sourcing Solution
-  Obsolete Management
-  Cost Control Management
-  Shortage Management
-  Alternative Solution
-  Excess Inventory Management