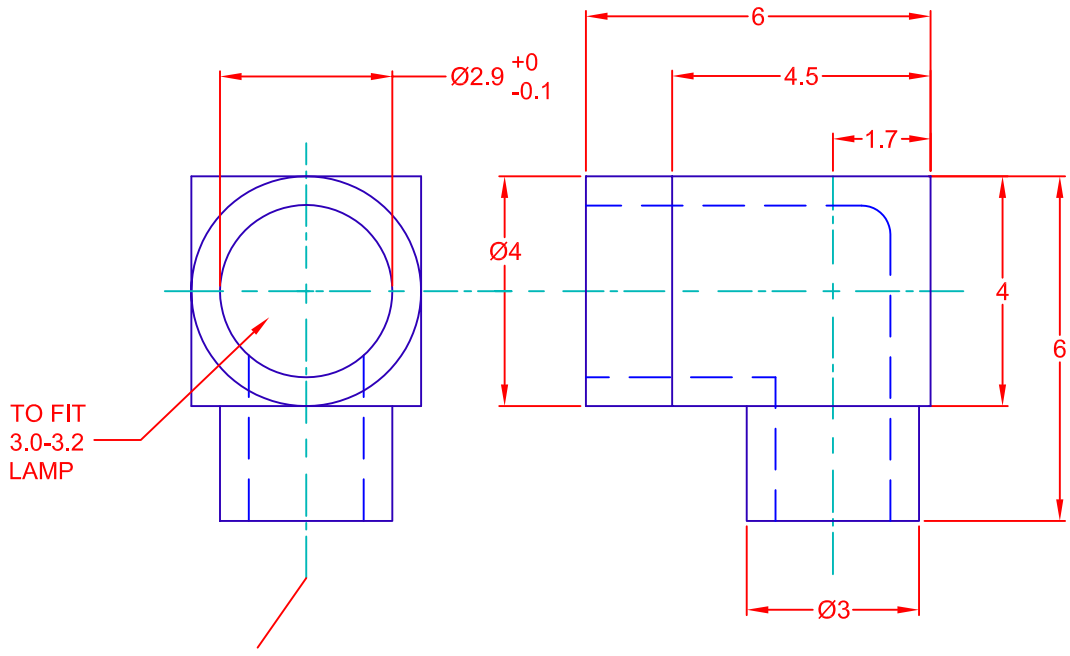


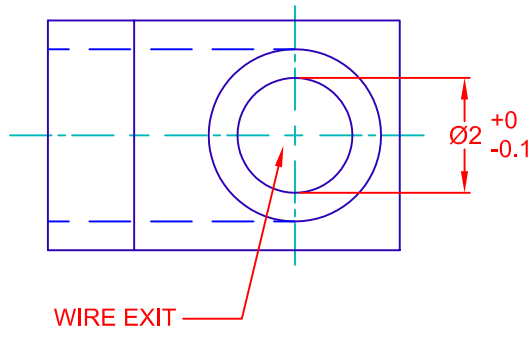


THE DATASHEET OF BF3/RC



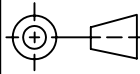



PARTING LINE 0.20 MAX.
FLASH ALLOWED



ALL DIMENSIONS APPLY AS MOLDED.
MATERIAL: SILICONE RUBBER/UL94V-0
COLOR: GRAY

REV. NO.	DESCRIPTION/ECO NUMBER	APPV'D DATE
A	ADD DIMENSIONS & HIDDEN LINES	3/9/06
	RELEASED TO CAD	7/16/03

METRIC  THIRD ANGLE PROJECTION		DIMENSIONS ARE IN MILLIMETERS TOLERANCE UNLESS OTHERWISE SPECIFIED 1 PL +/- 0.2 2 PL +/- 0 ANGLE +/- 0
DRAWN BY L. WENGSTROM	APPV'D BY DATE J.K. 3/9/06	- CAD DRAWING - MANUAL REVISIONS NOT PERMITTED

 JKL COMPONENTS CORPORATION		
TITLE 3mm FLUORESCENT RIGHT ANGLE END CAP		
SIZE A	FSCM NO. 55335	DRAWING NO. BF3/RC
SCALE NONE	RELEASED DATE 7/16/03	REVISION DATE 3/9/06
	REV. NO. A	SHEET 1 OF 1

Looking for pricing, stock, or lifecycle information?

Click below to explore more details on WIN SOURCE:

-  [View BF3/RC on WIN SOURCE](#)
-  [JKL Components Corp. Information](#)

Optimize Your Supply Chain with WIN SOURCE Solutions

-  Global Sourcing Solution
-  Obsolete Management
-  Cost Control Management
-  Shortage Management
-  Alternative Solution
-  Excess Inventory Management