



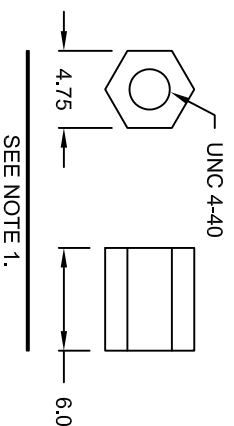
THE DATASHEET OF
957-025-010R031



HER - BLACK, GRAY, & METALIZED PLASTIC

SPECIFICATIONS:

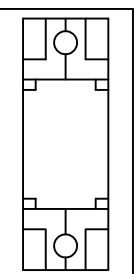
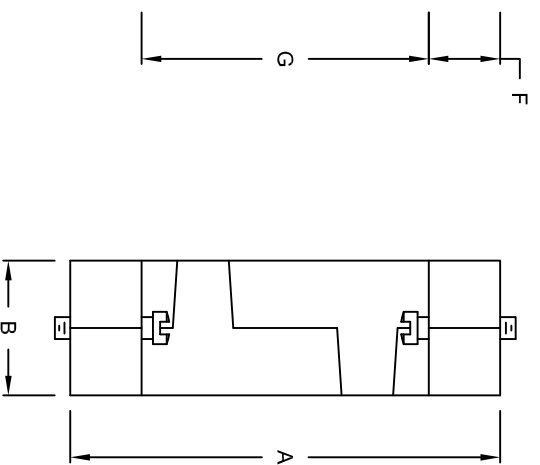
MATERIAL: A.B.S. UL94+HB
 FOR METALIZED PLATING: NICKEL OVER COPPER



BACKSHELL KIT INCLUDES:
 (2) BACKSHELL HALVES
 (4) JACKSCREWS

NOTE:

1. IF REQUIRED, COUPLING FOR FEMALE CONNECTOR, P/N 160-000-006R032, MUST BE ORDERED SEPARATELY



TYPICAL BOTH ENDS

DIMENSIONS (mm)						
C	D	E	F	G		
24.99	33.3	19.8	8.8	35.3		
33.3	41.2	27.6	9.1	33.8		
47.1	55.3	42.0	9.0	35.2		

TOLERANCE
 ±0.5
 X ±0.3
 XX ±0.2

DO NOT SCALE FROM DRAWING



THESE DRAWINGS AND SPECIFICATIONS ARE THE PROPERTY OF NorComp AND SHALL NOT BE REPRODUCED, COPIED OR USED AS THE BASIS FOR THE MANUFACTURE OF SALE OF APPARATUS WITHOUT WRITTEN PERMISSION.

NorComp

957-YYY-0Y0RYY1

SERIES _____
 POSITIONS _____
 009 _____
 015 _____
 025 _____
 MATERIAL _____
 010 = PLASTIC
 020 = METALIZED PLASTIC
 ROHS COMPLIANT _____
 COLOR _____
 01 = BLACK *ONLY FOR 010 PLASTIC OPTION
 03 = GRAY *ONLY FOR 010 PLASTIC OPTION
 12 = METALIZED
 PUT-UP _____
 1 = KIT

DRAWN: C. SMITH DATE: 05-09-07

SCALE: NTS SHEET 1 OF 1 REV 2

DWG NO. 957-YYY-0Y0RYY1

COMPLIANT

Looking for pricing, stock, or lifecycle information?

Click below to explore more details on WIN SOURCE:

 [View 957-025-010R031 on WIN SOURCE](#)

 [NorComp Inc. Information](#)

Optimize Your Supply Chain with WIN SOURCE Solutions

-  Global Sourcing Solution
-  Obsolete Management
-  Cost Control Management
-  Shortage Management
-  Alternative Solution
-  Excess Inventory Management