



**THE DATASHEET OF
DW22-10-10K**



REV.	BY	DATE	PART NO.
A	BT	1-16-93	ADDED SPECIFICA
B	AT	2-20-02	ADDED 1 TURN PO

SPECIFICATIONS

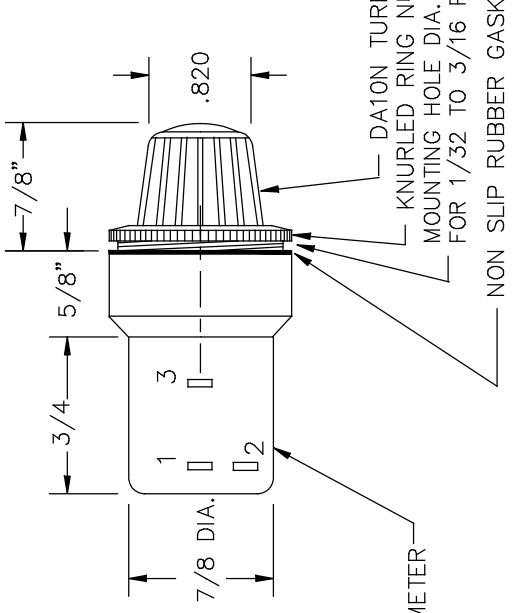
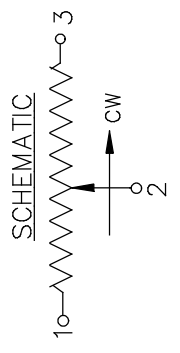
RESISTANCE RANGE ----- 100 TO 100K OHMS
 RESISTANCE TOLERANCE ----- ±5%
 ACCURACY ----- ±0.35% OF VOLTAGE RATIO
 REPEATABILITY ----- ±0.02% OR RESOLUTION OF POT
 RESOLUTION ----- SEE POT SPECIFICATIONS
 POWER RATING ----- 2 WATTS
 OPERATING TEMPERATURE ----- -30°C TO +85°C
 TEMPERATURE COEFFICIENT ----- ±20 PPM/°C
 TURNS ----- 10 (000 TO 999 COUNTS)
 TERMINALS ----- GOLD PLATED LUGS

HOUSING MATERIAL ----- HIGH TEMP. BLACK PLASTIC

NOTES:

1. USE ETI SYSTEMS POTENTIOMETERS MODEL MW22B.
2. POTENTIOMETERS MAY BE 1,3,5,10 TURNS.
ALSO MULTIPLE GANGS.
3. DIAL AVAILABLE WITHOUT POT, ASK FOR DA10N
4. THREADS WILL ACCEPT PANEL THICKNESS OF 3/16 MAX.
5. SEE POTENTIOMETER CATALOG FOR ADDITIONAL SPECIFICATIONS.

*MODEL WITH MW20B IS DW20.





MW22 POTENTIOMETER

<p>THIS DOCUMENT CONTAINS PROPRIETARY DATA OF POLARIS INDUSTRIAL ENTERPRISES, INC. NO DISCLOSURE, REPRODUCTION, OR USE OF ANY PART THERE OF MAY BE MADE EXCEPT BY WRITTEN PERMISSION.</p>		SCALE	NONE	<p>ETI SYSTEMS PART N</p>
		DATE:	5-8-87	
<p>TOLERANCES XX = +/- .010" FRACT. = +/- 1/64" XXX= +/- .005" ANGLES = +/- 1/2°</p> <p>ALL SPECIFICATIONS SUBJECT TO CHANGE WITHOUT NOTICE.</p>		BY		<p>POT/DIAL COMBINATION</p>
		APPR'VD	BT	
		CODE IDENT:	19477	

Looking for pricing, stock, or lifecycle information?

Click below to explore more details on WIN SOURCE:

-  [View DW22-10-10K on WIN SOURCE](#)
-  [Manufacturer Information](#)

Optimize Your Supply Chain with WIN SOURCE Solutions

-  Global Sourcing Solution
-  Obsolete Management
-  Cost Control Management
-  Shortage Management
-  Alternative Solution
-  Excess Inventory Management