

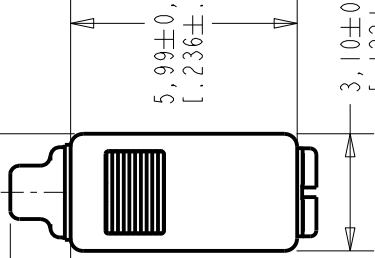


**THE DATASHEET OF
GD-31288-000**



1,59±0,05
[.063±.002]

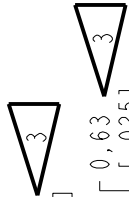
1,55±0,10
[.061±.004]



5,99±0,05
[.236±.002]

3,10±0,07
[.122±.003]

0,85
[.033]



0,63
[.025]



TERMINAL 2
(POSITIVE)

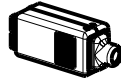


0,63
[.025]



TERMINAL 1
(NEGATIVE)

0,51
[.020]
MAXIMUM
SOLDER BUILDUP



SCALE 2:1
0.16 GRAMS

DIMENSIONS IN MILLIMETERS [INCHES]

KNOWLES ELECTRONICS
ITASCA, ILLINOIS U.S.A.

NOTES:



A POSITIVE GOING VOLT
RELATIVE TO TERMINAL
IN PRESSURE AT THE SO



LOCATED FROM TWO SURF
CONVENIENCE. ONLY AP
SURFACE, NOT TO BE US



DIMENSION TO APPROXIM
TERMINAL PAD.

∅ 1,41±0,04
[.0555±.0015]
OUTER DIAMETER

1,30±0,10
[.051±.004]



2,59±0,07
[.102±.003]

2,59±0,07
[.102±.003]

1,30±0,10
[.051±.004]



Revision	C.O. #	Implementation Date	RELEASE
C	C10113289	3-30-12	Act
B	C10112587	6-28-11	
A	C10111748	10-18-10	

SCALE:

5:1

DO NOT SCALE DRAWING

TITLE:

RECEIVER

OUTLINE DRAWING

GD-31288-

SHT 1.

KNOWLES ELECTRONICS ITASCA, ILLINOIS U.S.A.

RECEIVER

CD-31288-000

SHT 2.1

PERFORMANCE SPECIFICATION

TITLE:

WHEN TEST LIMITS ARE USED TO ESTABLISH INCOMING INSPECTION ACCEPTANCE/REJECTION CRITERIA, CORRELATION OF TEST EQUIPMENT WITH KNOWLES IS ALSO REQUIRED FOR ELIMINATION OF EQUIPMENT AND TEST METHOD VARIATION

DR. BY	DATE	10-18-10
LSY	DATE	11-1-10
CK. BY	DATE	11-1-10
GJP	DATE	11-1-10
APP. BY	DATE	11-1-10
GJP	DATE	11-1-10

Revision	C.O. #	Implementation Date	RELEASE LEVEL
A	C10111748	10-18-10	Active
B	C10112587	6-28-11	
C	C10113289	3-30-12	
REVISION			

TEST CONDITIONS

NOMINAL SOURCE VOLTAGE	0.289 Vrms, 0 mA DC BIAS
SOURCE IMPEDANCE	< 1 Ohm
TUBING	10 mm [.394"] LONG X 1 mm [.039"] I.D. ("ITE")
COUPLER CAVITY	2 CM ³ , SIMULATED ANSI S3.7 TYPE HA-3 (IEC 60318-5)

TABLE 4

TABLE 3

POWER (mW)	500 Hz SPL (dB)	REQUIRED VOLTAGE (Vrms)	Peak SPL (dB)	REQUIRED VOLTAGE (Vrms)
50	117.4	3.3	127.9	4.5
10	114.1	1.5	123.8	2.2

MAXIMUM OUTPUT LEVEL (TYPICAL)

TABLE 2

FREQUENCY (Hz)	AC DRIVE (Vrms)	DC BIAS (V)	LIMIT (%)
833	0.289	0	3
1250	0.289	0	3
833	0.813	0	8
1250	0.813	0	8

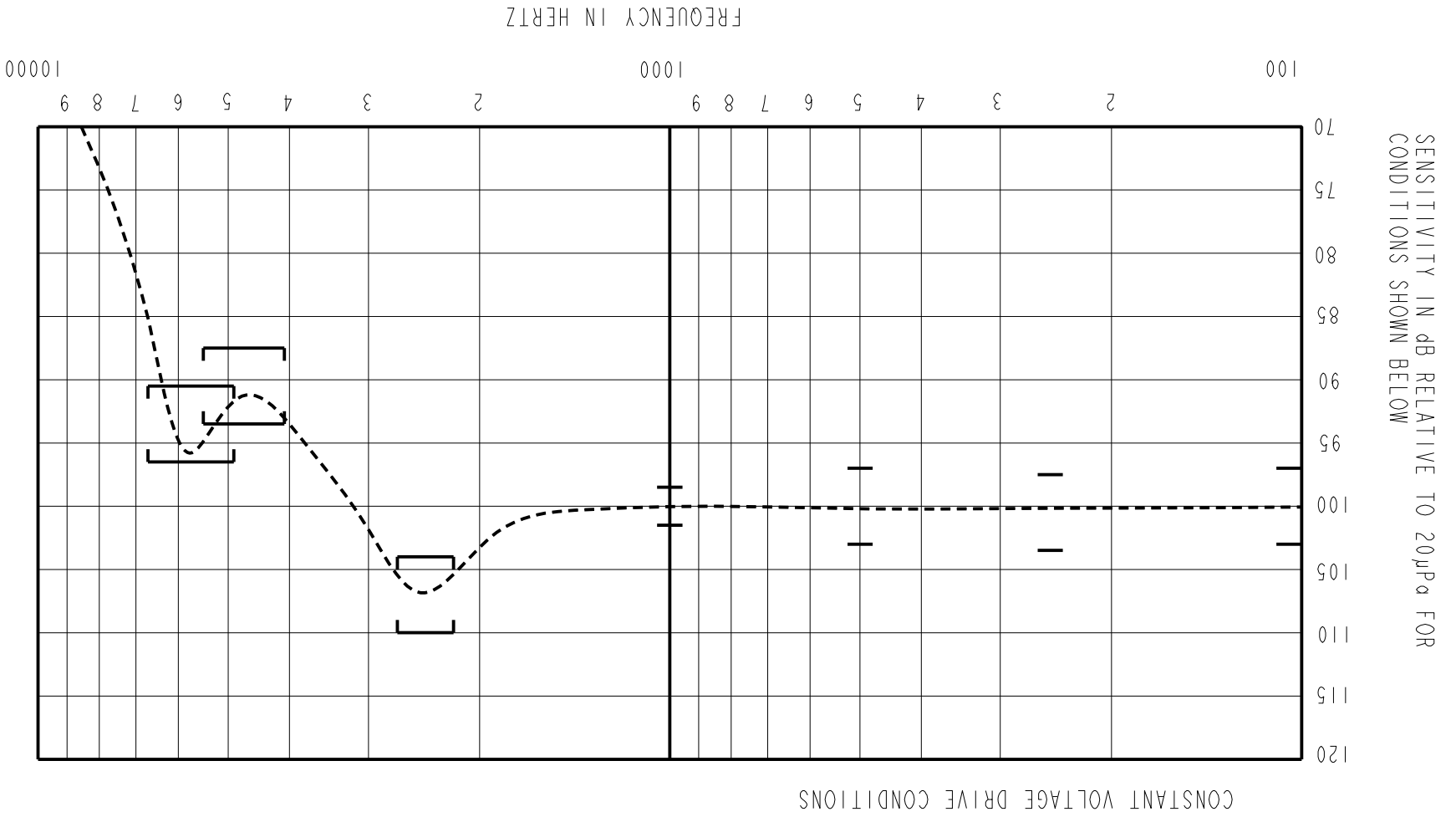
TOTAL HARMONIC DISTORTION DEVICE WILL NOT EXCEED TOTAL HARMONIC DISTORTION LEVELS LISTED BELOW.

TABLE 1

LIMIT TYPE	FREQUENCY (Hz)	MINIMUM	NOMINAL	MAXIMUM
REL	100	-3.0	0.0	+3.0
REL	250	-2.5	+0.5	+3.5
REL	500	-3.0	0.0	+3.0
REF	1000	-1.5	100.0	+1.5
PEAK	2200 - 2700	+4.0	+7.0	+10.0
VALLEY	4075 - 5475	-12.5	-9.5	-6.5
PEAK	4900 - 6700	-9.5	-6.5	-3.5

SENSITIVITY DESCRIBED IN TABLE 4. NOMINAL SENSITIVITY AT 1KHz IS DB RELATIVE TO 20µPa. ALL OTHER VALUES IN DB RELATIVE TO THE SENSITIVITY AT 1KHz. DEVICE WILL PRODUCE THE SPL LISTED BELOW UNDER TEST CONDITIONS

ACOUSTICAL



INTENDED FOR USE IN CIC, RIC, AND MINI-BTE APPLICATIONS. THIS IS A PAIR OF GE RECEIVERS WITH VERY LOW VIBRATION IN ALL DIRECTIONS. ONE GE RECEIVER IS REVERSE MAGNETIZED FOR MAGNETIC LEAKAGE CONSIDERATIONS.

NO DAMPING

CD-31288-000 SHEET 2.1

MECHANICAL

PORT LOCATION: 12S

SOLDER TYPE: SAC305

TEMPERATURE

OPERATING: SENSITIVITY WILL NOT VARY MORE THAN +/- 3 DB AT 500 HZ FROM -17°C TO 63°C

STORAGE: -40°C TO 63°C

SHOCK RESISTANCE: 90% SURVIVAL RATE WITH THD @ 1/3

PEAK FREQUENCY LESS THAN 10%, THD @ 1/2 PEAK FREQUENCY LESS THAN 20% AND LESS THAN 3DB CHANGE IN SENSITIVITY AT 1KHz WHEN SUBJECTED TO 15,000 G.

ELECTRICAL

TABLE 4

DC RESISTANCE @ 20°C	201 Ohms ± 10%
IMPEDANCE @ 500 Hz	230 Ohms ± 15%
IMPEDANCE @ 1 KHz	281 Ohms ± 15%
INDUCTANCE @ 500 Hz	22.2 mH TYPICAL
CAPACITANCE @ 10 MHz	6.27 pF TYPICAL

ISOLATION: CASE WILL BE ELECTRICALLY ISOLATED FROM THE COIL CIRCUIT.

Looking for pricing, stock, or lifecycle information?

Click below to explore more details on WIN SOURCE:

 [View GD-31288-000 on WIN SOURCE](#)

 [Knowles](#) Information

Optimize Your Supply Chain with WIN SOURCE Solutions

-  Global Sourcing Solution
-  Obsolete Management
-  Cost Control Management
-  Shortage Management
-  Alternative Solution
-  Excess Inventory Management