



**THE DATASHEET OF**  
**160-380-001R031**



**MATERIAL:**

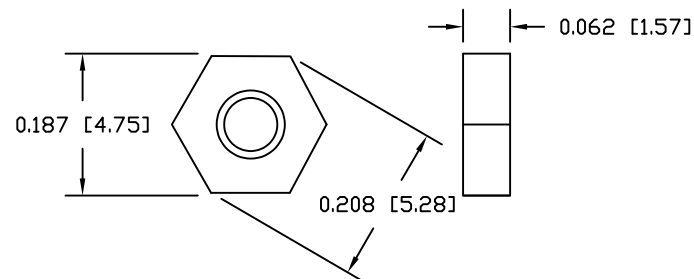
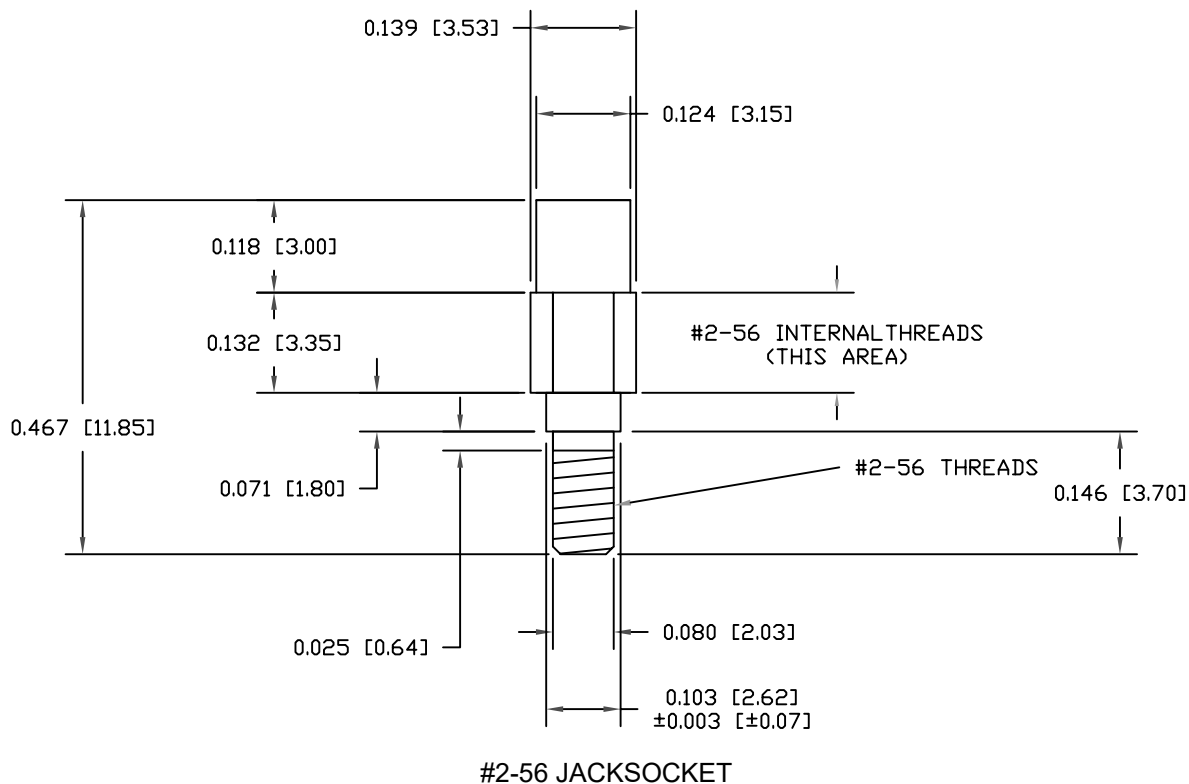
JACKSOCKETS: NICKEL PLATED BRASS (3604)  
 SPLIT LOCK WASHER: ZINC PLATED STEEL  
 #2-56 NUT: ZINC PLATED STEEL

INTENDED TO ONLY BE USE ON NORCOMP  
 380 SERIES MALE CONNECTORS

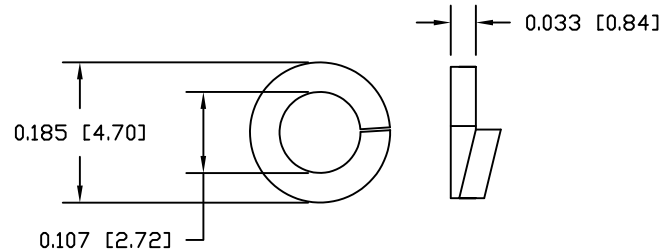
RECOMMENDED MAX. TORQUE = 30 in-oz

**KIT INCLUDES:**

- (2) #2-56 JACKSOCKETS
- (2) SPLIT LOCK WASHERS
- (2) #2-56 NUTS



#2-56 NUT



SPLIT LOCK WASHER

DO NOT SCALE FROM DRAWING



THESE DRAWINGS AND SPECIFICATIONS ARE THE PROPERTY OF NorComp AND SHALL NOT BE REPRODUCED, COPIED OR USED AS THE BASIS FOR THE MANUFACTURE OF SALE OF APPARATUS WITHOUT WRITTEN PERMISSION.

DRAWN: M. SIGMON		DATE: 08-09-12	
SCALE: NTS	SHEET 1	OF 1	REV 6
DWG NO. 160-380-001R031			

**NorComp**

RoHS COMPLIANT

## Looking for pricing, stock, or lifecycle information?

Click below to explore more details on WIN SOURCE:

 [View 160-380-001R031 on WIN SOURCE](#)

 [NorComp Inc. Information](#)

## Optimize Your Supply Chain with WIN SOURCE Solutions

-  Global Sourcing Solution
-  Obsolete Management
-  Cost Control Management
-  Shortage Management
-  Alternative Solution
-  Excess Inventory Management