



THE DATASHEET OF 10DKDG3S



INTRODUCTIONS

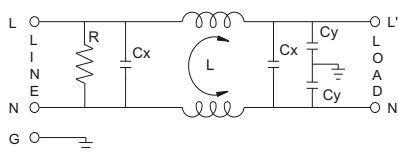
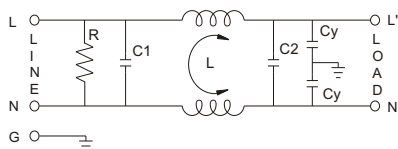
- Effectively control EMI suppression of both line-to-line and line-to-ground noise.
- All part numbers are UL recognized, CSA certified and VDE approved.

COMPONENTS

PART NO.	C1 (uF)	C2 (uF)	L (mH)	Cy (pF)	R (Ω)
02DKAG5	0.22	0.22	2.1	3300	2.2M
02DKAW5					
03DKAG5					
03DKAW5					
03DKDG3S					
03DKDW3S					
05DKAG5					
05DKAS5					
05DKAW5					
05DKDG3S					
05DKDW3S					
10DKAG5					
10DKAS5					
10DKAW5					
10DKDG3S					
10DKDW3S					
20DKBG5	0.22	0.22	1.4	3300	2.2M
20DKBS5	0.22	0.22	1.4	3300	2.2M
30DKCS5	0.22	0.47	0.59	10000	470K

PART NO.	Cx (uF)	L (mH)	Cy (pF)	R (Ω)
03DKBG5B	0.15	2.5	4700	1.0M
06DKBG5B		1.0		1.0M
12DKBG5B		0.7		470K
16DKCG5B		0.65		1.0M
16DKCW5B		0.65		1.0M
20DKCG5B		0.60		1.0M
20DKCS5B		0.60		1.0M
30DKCS5B	0.47	0.67	10000	470K

ELECTRICAL SCHEMATIC



XXDKXX5B

SPECIFICATIONS

- Maximum leakage current each
 line-to-ground @ 115VAC 60Hz: 0.25mA
1.0mA (10000pF)
 @ 250VAC 50Hz: 0.45mA
2.0mA (10000pF)
- Hipot rating (one minute)
 line-to-ground: 2250VDC
 line-to-line: 1450VDC
- Operating frequency: 50/60Hz
- Rated voltage: 115/250VAC

MINIMUM INSERTION LOSS IN dB

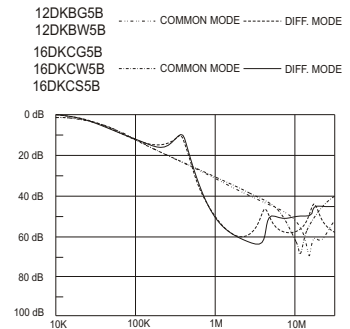
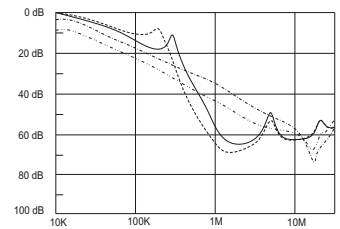
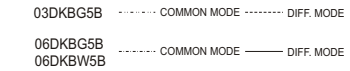
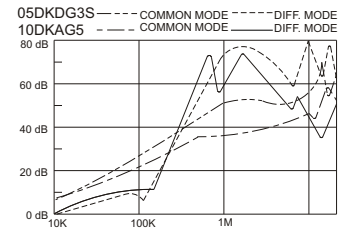
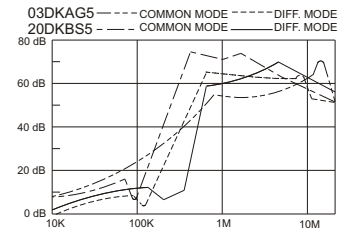
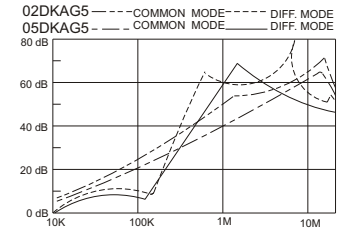
COMMON MODE (L-G) IN 50 OHM SYSTEM							
CURRENT RATING	STYLE	FREQUENCY-MHz					
		.15	.50	1.0	5.0	10	30
2,3,5A	AG5, AWG	22	30	38	47	50	40
	AS5	22	30	38	47	50	40
3A(S)	DG3S	22	30	38	50	55	45
	DW3S	22	30	38	50	55	45
5A(S)	DG3S	22	30	38	50	55	45
	DW3S	22	30	38	50	55	45
10A	AG5, AS5	15	20	28	45	45	45
	AW5	15	20	28	45	45	45
10A(S)	DG3S, DW3S	15	20	28	45	45	45
	DG3S, DW3S	15	20	28	45	45	45
20A	BG5, BS5	14	19	28	40	42	35
30A	CS5	10	20	30	40	45	30
DIFFERENTIAL MODE (L-L) IN 50 OHM SYSTEM							
2,3,5A	AG5, AWG	22	30	38	47	50	40
	AS5	22	30	38	47	50	40
3A(S)	DG3S	22	30	38	50	55	45
	DW3S	22	30	38	50	55	45
5A(S)	DG3S	22	30	38	50	55	45
	DW3S	22	30	38	50	55	45
10A	AG5, AS5	15	20	28	45	45	45
	AW5	15	20	28	45	45	45
10A(S)	DG3S, DW3S	15	20	28	45	45	45
	DG3S, DW3S	15	20	28	45	45	45
20A	BG5, BS5	14	19	28	40	42	35
30A	CS5	10	20	30	40	45	30

COMMON MODE (L-G) IN 50 OHM SYSTEM							
CURRENT RATING	STYLE	FREQUENCY-MHz					
		.15	.50	1.0	5.0	10	30
3A	BG5B	20	30	35	45	50	45
6A	BG5B, BW5B	15	20	25	40	45	45
12A	BG5B	10	20	22	35	45	40
16A	CG5B, CW5B	10	18	20	35	45	30
20A	CG5B, CS5B	10	18	20	30	35	35
30A	CS5B	10	25	30	45	50	35
DIFFERENTIAL MODE (L-L) IN 50 OHM SYSTEM							
3A	BG5B	7	35	50	45	45	45
6A	BG5B, BW5B	10	20	45	45	50	45
12A	BG5B	10	20	40	45	45	45
16A	CG5B, CW5B	10	18	40	40	40	35
20A	CG5B, CS5B	10	12	35	35	40	40
30A	CS5B	12	40	50	50	50	45

SERIES DIMENSIONS

CURRENT RATING	STYLE	DIMENSIONS IN INCHES/mm						
		A	B	C	D	E		
2A	AG5	2.99	51.8	0.90	2.38	2.79		
		75.9					22.9	
AW5	1.83	1.16		60.5				70.9
	46.5							
3A	AG5	2.99		1.29			1.575	0.61
		75.9						
	AW5	1.83		1.29	1.575	0.61		
		46.5						
	DG3S	3.14		1.29	1.575	0.61		
		79.8						
DW3S	2.55	1.29		1.575	0.61			
	64.8							
5A	AG5	2.99	51.8	1.16	2.38	2.79		
		75.9					29.5	
	AW5	1.83		1.29				40.0
		46.5						
	AS5	3.37		1.29			40.0	15.5
		85.6						
DG3S	3.14	1.29	1.575	0.61				
	79.8							
DW3S	2.55	1.29	1.575	0.61				
	64.8							
10A	AG5	3.25	58.4	1.16	2.38	2.79		
		82.5					29.5	
	AW5	2.08		1.29				40.0
		52.8						
	AS5	3.37		1.29			40.0	15.5
		85.6						
DG3S	3.22	1.29	1.575	0.61				
	81.5							
DW3S	2.63	1.29	1.575	0.61				
	66.8							
20A	BG5	3.25	2.52	1.54	2.94	3.36		
		82.5					39.1	74.7
BS5	3.37	64.0	1.54	2.94	74.7	85.3		
	85.6							
30A	CS5	3.87	2.04	1.54	2.94	74.7		
		98.3					51.8	85.3

INSERTION LOSS (TYPICAL)



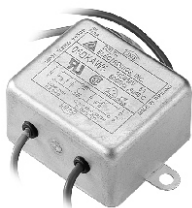
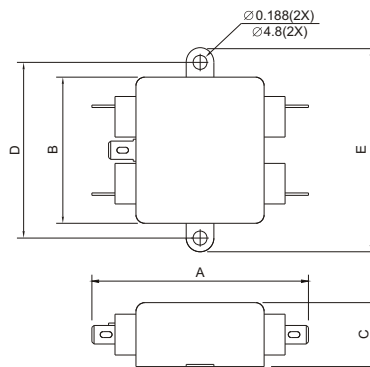
SERIES DIMENSIONS

CURRENT RATING	STYLE	DIMENSIONS IN INCHES/mm					
		A	B	C	D	E	F
3A	BG5B	2.13 54.0	2.54 64.5	1.34 34.0	1.77 45.0	1.18 30.0	-
6A	BG5B						-
12A	BG5B						-
16A	CG5B	2.40	2.81	1.79	2.02	30.0	3.94 100.0
	CW5B	61.0	71.5	45.5	51.3		-
20A	CG5B	2.95	3.34	2.04	2.52	30.0	3.94 100.0
	CS5B	75.0	84.8	51.8	64.0		-
30A	CS5B	4.06	4.49	2.22	3.74	1.83	-
		103.0	114.0	56.5	95.0	46.4	

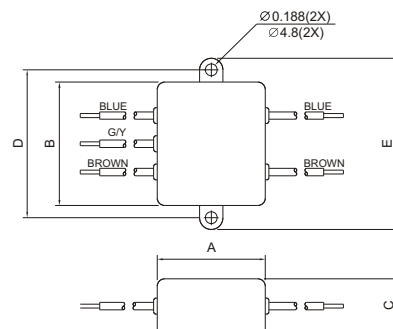
MECHANICAL CONSTRUCTION



AG5



AW5



WIRE LENGTH : 4.0" MIN.

UNIT: $\frac{\text{INCH}}{\text{mm}}$

MECHANICAL CONSTRUCTION



AS5



BG5



BS5



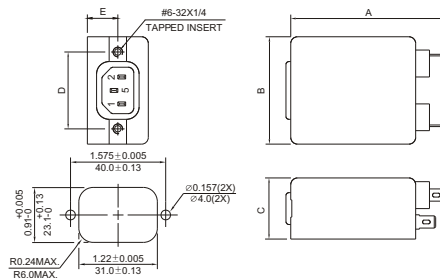
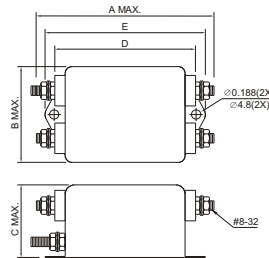
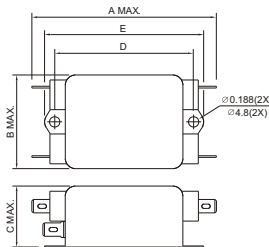
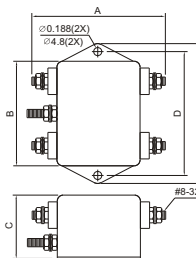
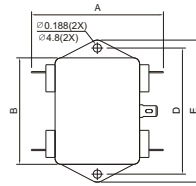
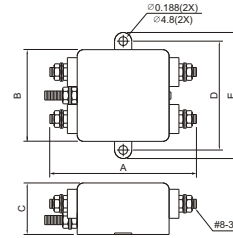
CG5



CS5



DG3S



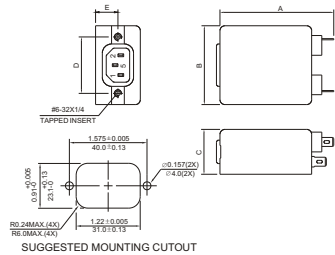
SUGGESTED MOUNTING CUTOUT

UNIT: INCH
mm

MECHANICAL CONSTRUCTION



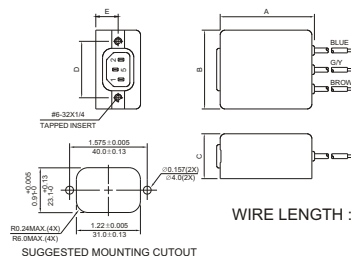
DG3



SUGGESTED MOUNTING CUTOUT

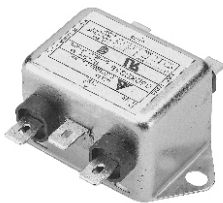


DW3S

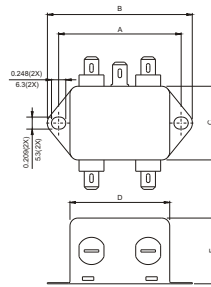


WIRE LENGTH : 4.0" MIN.

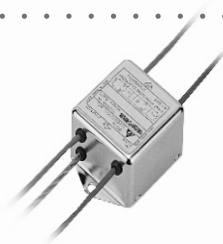
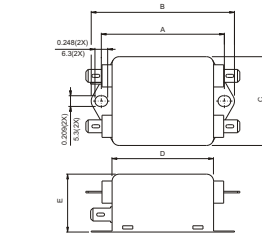
SUGGESTED MOUNTING CUTOUT



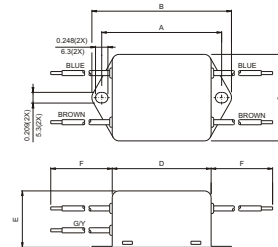
BG5B
(option wire style)



CG5B



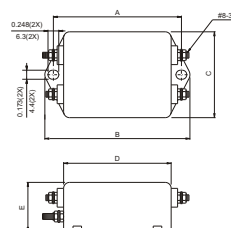
CW5B



WIRE LENGTH : 4.0" MIN.



CS5B



GENERAL PURPOSE ONE-STAGE FILTERS

Looking for pricing, stock, or lifecycle information?

Click below to explore more details on WIN SOURCE:

 [View 10DKDG3S](#) on WIN SOURCE

 [Delta Electronics](#) Information

Optimize Your Supply Chain with WIN SOURCE Solutions

-  Global Sourcing Solution
-  Obsolete Management
-  Cost Control Management
-  Shortage Management
-  Alternative Solution
-  Excess Inventory Management