



**THE DATASHEET OF
Y2011U2V203NQ**



Y Series

4, 5 & 6 Tumbler Switchlocks



Patent No. 4,639,562

Agency Approvals

Agency	Agency File Number
cUL US	E42363

Specifications

Contact Ratings	Q contact material: 4 amps @ 125 V AC or 28 V DC; 2 amps @ 250 V AC (UL/CSA). See page 8 for additional ratings.
Contact Resistance	Below 10 m Ω typ. initial @ 2-4 V DC, 100 mA, for both silver and gold plated contacts.

Electrical Characteristics

Electrical Life	10,000 make-and-break cycles at full load.
Insulation Resistance	10 ⁹ Ω min.
Dielectric Strength	1,000 Vrms min. @ sea level.
Indexing	45° or 90°, 2-4 positions (4&5 tumbler switchlocks). 45°, 3 positions; or 90°, 2 positions (6 tumbler tubular switchlocks). Other functions available, consult Customer Service Center.
Static Resistance	Anti-static models exceed 20 KV DC static resistance @ sea level, lock body to terminals.
Mounting Torque	10 in./lbs.; 14 in./lbs max.
Operating Temperature	-30°C to 85°C

Description

The Y series 4, 5 & 6 tumbler switchlock is an anti-static switch, exceeding 20 KV DC static resistance. Typically used in cash registers, point-of-sale terminals and computers, the high-performing Y series is also available in momentary models and with wire leads and/or harnesses.

Features & Benefits

- Anti-static switch—exceeds 20 KV DC static resistance
- Wire leads and harnesses available
- Momentary models available

Applications

- Point-of-sale terminals
- Computers
- Cash registers

Materials

Lock	Zinc alloy with stainless steel facing, std. (4 & 5 tumbler lock and 6 tumbler tubular lock).
Keys	Two nickel plated brass keys, with code number, std. (4 and 5 tumbler lock). Two die cast chrome plated zinc alloy keys, std. (6 tumbler lock).
Switch Housing	Glass filled polyester (UL 94V-0).
Contacts and Terminals	Q contact material: Copper, silver plated. See page 8 for additional contact materials.
Mounting Nut	Zinc Alloy
Mounting Clip	Steel, zinc plated
Dress Nut	Brass, nickel plated
Terminal Seal	Epoxy

Notes:

Any models supplied with Q, B or G contact material are RoHS compliant. Specifications and materials listed above are for switchlocks with standard options. For information on specific and custom switchlocks, consult Customer Service Center.

Y Series

4, 5 & 6 Tumbler Switchlocks



Ordering Number

To order, simply select desired option from each category and place in the appropriate box. For additional options not shown in catalog, consult Customer Service Center.

Yxxxxx - x - x - x - xx - x - x - x

<p>Switch and Lock Function</p> <p>Y10013: SP, 45°, keypull pos. 1 Y1011U: SP, 90°, keypull pos. 1 & 2 Y1001U: SP, 45°, keypull pos. 1 & 3 Y2001U: DP, 45°, keypull pos. 1 & 3 Y10082: SP, 45°, keypull pos. 1 Y20082: DP, 45°, keypull pos. 1 Y100AA: SP, 45°, keypull pos. 1, 2 & 3 Y200AA: DP, 45°, keypull pos. 1, 2 & 3 Y100AB: SP, 45°, keypull pos. 1, 2, 3 & 4 Y200AB: DP, 45°, keypull pos. 1, 2, 3 & 4 Y10113: SP, 90°, keypull pos. 1 Y20113: DP, 90°, keypull pos. 1 Y1011C: SP, 90°, keypull pos.2 Y2011C: DP, 90°, keypull pos. 2 Y2011U: DP, 90°, keypull pos. 1 & 2 Y14173: SP, 90°, keypull pos. 1 Y1417U: SP, 90°, keypull pos. 1,2 & 3 Y10812: SP, 45°, mom., keypull pos. 1 Y20812: DP, 45°, mom., keypull pos. 1 Y19073: SP w/common, 90°, keypull pos. 1 Y1907U: SP w/common, 90°, keypull pos. 1, 2 & 3 Y1900S: SP w/common, 90°, keypull pos. 1, 2, 3 & 4</p> <p>Keying</p> <p>2: Two nickel plated brass keys (4 &5 tumbler) or two die cast zinc alloy keys withchrome plating (6 tumbler) 6: Two nickel plated brass keys with code on lock face</p>	<p>Lock Finish</p> <p>2: Stainless steel facing 8: Gloss black facing F: Polished nickel facing</p> <p>Lock Type</p> <p>A: 4 Tumbler lock (YX08 models) C: 4 Tumbler lock with detent V: 6 Tumbler tubular lock B: 5 Tumbler lock R: 4 Tumbler lock with detent and anti-Static switch W: 6 Tumbler tubular lock with anti-Static switch</p>	<p>Seal</p> <p>None: No seal E: Epoxy seal</p> <p>Contact Material</p> <p>Q: Silver B: Gold G: Gold or silver</p> <p>Mounting/Lock Style</p> <p>N: With nut D: With clip L: With removable dress nut and latch pawl R: With removable dress nut</p> <p>Terminations</p> <p>03: Solder lug with hole 01: Solder lug with notch 02: PC Thru-hole 07: Solder lug with hole (Y190XX models only) WC: Wire lead</p>
---	--	--

Y Series

4, 5 & 6 Tumbler Switchlocks



Switch and Lock Function Single & Double Pole Switches

No. Tumblers	No. Poles	Model No.	Connected Terminals				Key Pull Positions	Lock Configuration	Indexing	
			POS. 1	POS. 2	POS. 3	POS. 4				
4, 5 & 6	SP	Y10013	8-1	1-2	2-3	-	Position 1		45°	
4, 5 & 6	SP, DP	Y10001U Y2001U	8-1 8-1, 4-5	1-2 1-2, 5-6	2-3 2-3, 6-7	-	Position 1 & 3			
4 & 5	SP, DP	Y10082 Y20082	8-1 8-1, 4-5	1-2 1-2, 5-6	7-8 7-8, 3-4	-	Position 1			
4	SP, DP	Y100AA Y200AA	8-1 8-1, 4-5	1-2 1-2, 5-6	7-8 7-8, 3-4	-	Position 1, 2 & 3			
4	SP, DP	Y100AB Y200AB	8-1 8-1, 4-5	1-2 1-2, 5-6	2-3 2-3, 6-7	3-4 3-4, 7-8	Position 1, 2, 3 & 4			
4, 5 & 6	SP, DP	Y10113 Y20113	8-1 8-1, 4-5	1-3 1-3, 5-7	-	-	Position 1			
4 & 5	SP, DP	Y1011C Y2011C	8-1 8-1, 4-5	1-3 1-3, 5-7	-	-	Position 2			
4, 5 & 6	SP, DP	Y1011U Y2011U	8-1 8-1, 4-5	1-3 1-3, 5-7	-	-	Position 1 & 2			90°
4	SP	Y14173	7-1	1-3	6-7	-	Position 1			
4	SP	Y1417U	7-1	1-3	6-7	-	Position 1, 2 & 3			

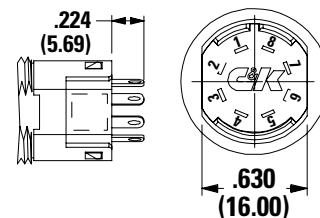
Single & Double Pole Momentary Switches

No. Tumblers	No. Poles	Model No.	Connected Terminals				Key Pull Positions	Lock Configuration	Indexing
			POS. 1	POS. 2	POS. 3	POS. 4			
4	SP, DP	Y10812 Y20812	8-1 8-1, 4-5	1-2 1-2, 5-6	-	-	Position 1		45° Mom.

Legend

- ▲ = Momentary Positions (45°)
- = Detent Positions (45° or 90°)
- ⊙ = Key pull possible in these positions.
- ↑ = Stop Positions

Terminal Numbers inches (mm)



Notes: Terminal numbers molded on bottom of housing. All models with all options when ordered with 'G' or 'Q' contact material.

Y Series

4, 5 & 6 Tumbler Switchlocks



Single Pole Switches with Common

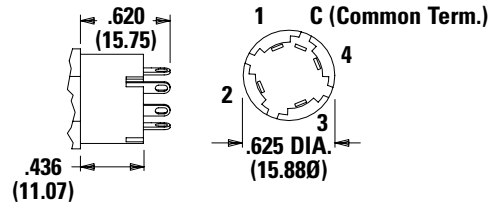
No. Tumblers	No. Poles	Model No.	Connected Terminals				Key Pull Positions	Lock Configuration	Indexing
			POS. 1	POS. 2	POS. 3	POS. 4			
4	SP	Y19073	C-1	C-2	C-4	-	Position 1		90°
		Y1907U	C-1	C-2	C-4	-	Position 1, 2 & 3		
		Y1900S	C-1	C-2	C-3	C-4	Position 1, 2, 3 & 4		

Legend

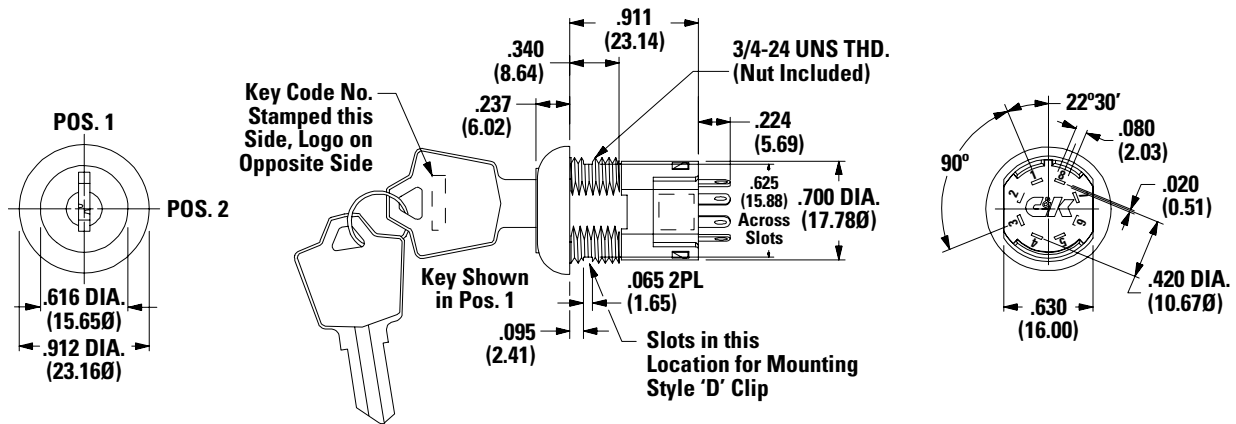
- = Detent Positions (45° or 90°)
- ⊙ = Key pull possible in these positions.
- = Stop Positions

Note: Terminal numbers marked on insulator. All models C&K® us with all options when ordered with 'G' or 'Q' contact material. Epoxy seal not available. Removable dress nut not available with any Y190XX models.

Terminal Numbers inches (mm)

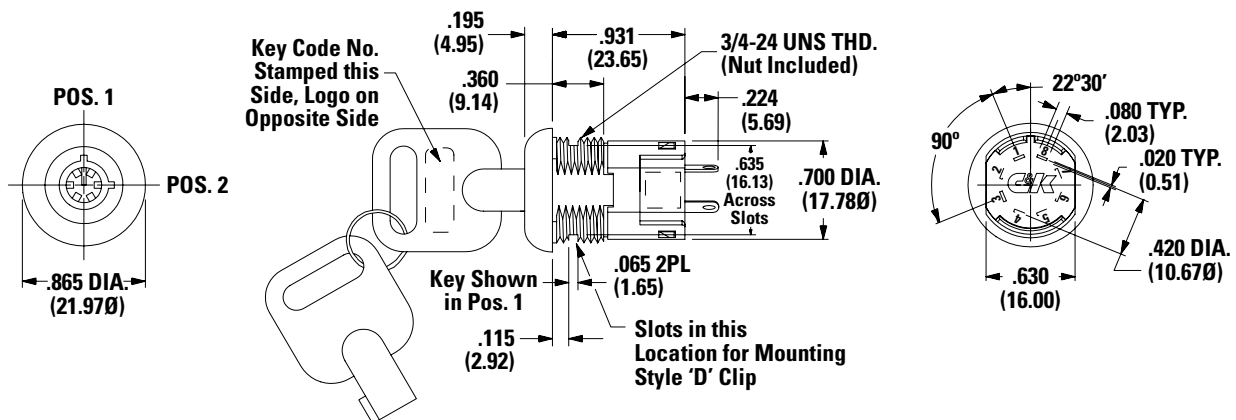


4 & 5 Tumbler inches (mm)



Part number shown: Y100132C203NQ

6 Tumbler inches (mm)



Part number shown: Y1011U2V203NQ

Y Series

4, 5 & 6 Tumbler Switchlocks



Available Option Combinations

Models	Lock Types						Terminations					Mounting / Lock Styles			
	A	B	C	R	V	W	01	02	03	07	WC	D	L	N	R
YX0013		•	•		•	•	•	•	•		•	•	•	•	•
YX001U		•	•	•	•	•	•	•	•		•	•	•	•	•
YX0082		•	•	•			•	•	•		•	•		•	
YX00AX			•	•			•	•	•		•	•		•	•
YX0113		•	•	•	•	•	•	•	•		•	•		•	•
YX011C		•	•	•			•	•	•		•	•		•	•
YX011U		•	•	•	•	•	•	•	•		•	•	•	•	•
Y141XX			•	•			•	•	•		•	•		•	•
YX0812	•						•	•	•		•	•		•	•
Y190XX			•	•				•		•	•	•		•	

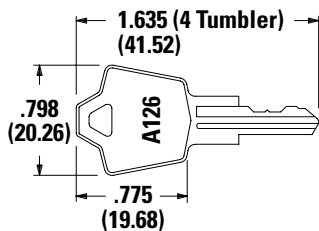
Keying

Option Code	Lock Types	Code No. on Key	Code No. on Lock
2	2 nickel plated brass keys (4 & 5 tumbler) or 2 die cast chrome plated zinc alloy keys (6 tumbler)	Yes	No
6	2 nickel plated brass keys, 4 & 5 tumbler only	Yes	Yes

Notes:

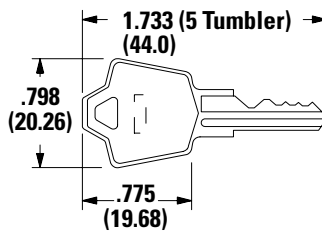
All orders keyed alike, standard. For more than one key code, master keying, replacement keys, or other special features, consult Customer Service Center.

Nickel Plated Brass Key inches (mm)



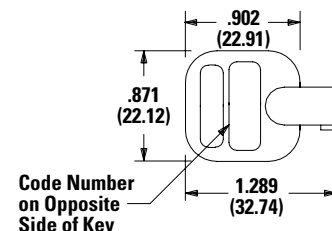
Keys Part Number: 115140126

Nickel Plated Brass Key inches (mm)



Keys Part Number: 115441001

Chrome Plated Zinc Alloy Key inches (mm)



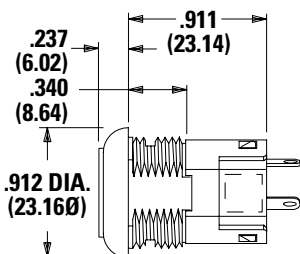
Keys Part Number: 363C1AAAA

Notes:

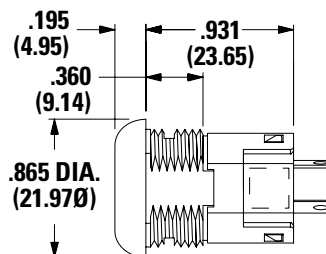
Keys are available separately, see page 9. Key head shape subject to change without notice.

Short Anti-Static Lock Types

C 4 Tumbler Lock with Detent B 5 Tumbler Lock

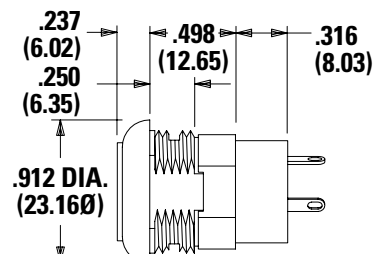


V 6 Tumbler Tubular Lock



Available with Lock Finish 'Z' only

A 4 Tumbler Lock (Momentary Modules Only)



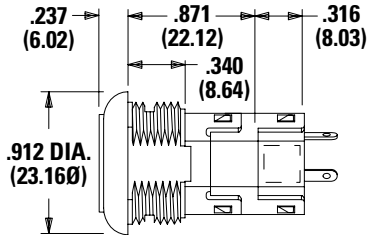
Y Series

4, 5 & 6 Tumbler Switchlocks

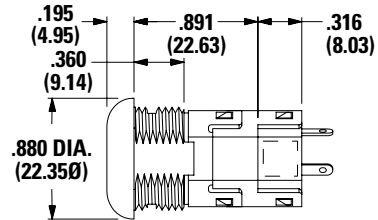


Lock Type

R 4 Tumbler Lock with Detent and Short Anti-Static Switch



W 6 Tumbler Tubular Lock with Anti-Static Switch



Available with Lock Finish 'Z' only

Notes:

For available option combinations, see page 8. U.S. Pat. No. 4,639,562 Exceeds 20 KV DC static resistance @ sea level, lock body to terminals.

Lock Finish

2 Stainless Steel

8 Gloss Black

F Polished Nickel



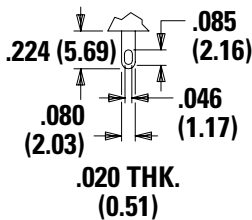
Available with Lock Types 'V' & 'W' only.

Notes:

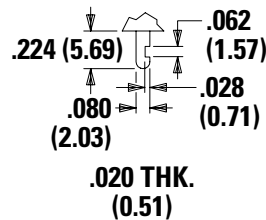
For available option combinations, see page 8.

Terminations

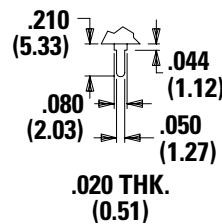
03 Solder Lug with Hole



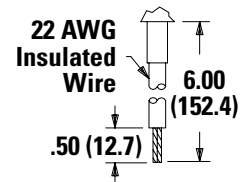
01 Solder Lug with Notch



02 PC Thru-hole



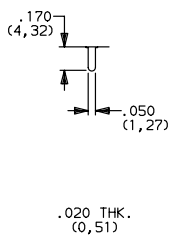
WC Wire Lead



Black wire standard. other colors and lengths available, consult Customer Service Center. UL style 1015.

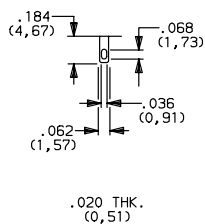
All Models Except Y190

02 PC Thru-hole

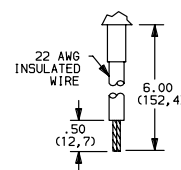


Y190 Model Only

07 Solder Lug with Hole

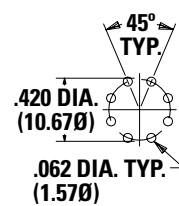


WC Wire Lead



Black wire standard. other colors and lengths available, consult Customer Service Center. UL style 1015.

PC Mounting



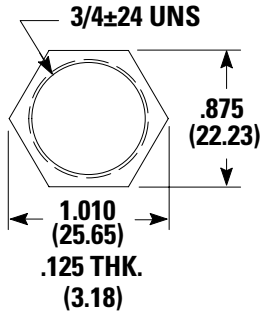
Y Series

4, 5 & 6 Tumbler Switchlocks

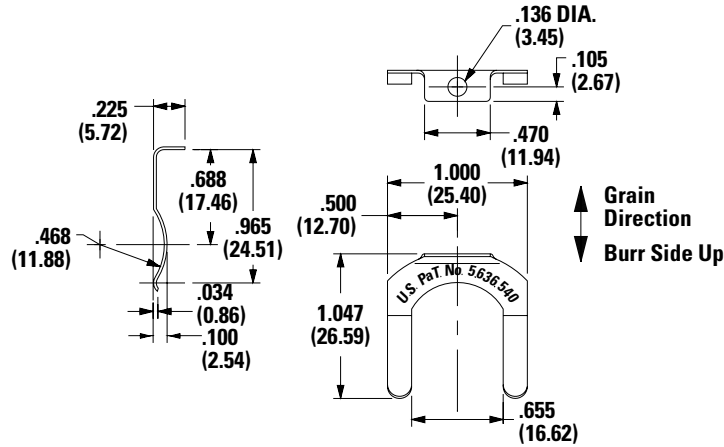


Mounting/Lock Style

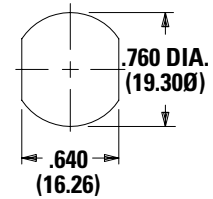
N With Nut
Nut part number: 937C00000



D With Clip
Clip Part Number: 906B00000

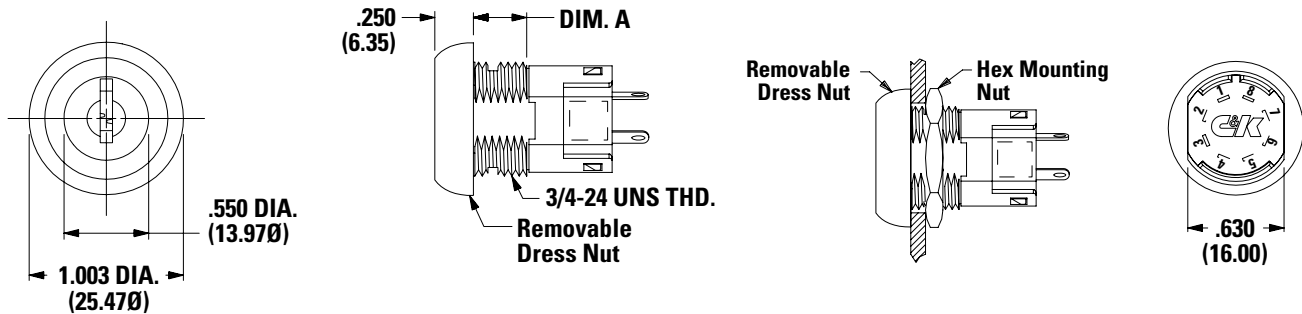


Panel Mounting



Option Code	Mounting Style	Panel Thickness
N	With nut	0.085 - 0.105
D	With clip	(2.16 - 2.67)

R Removable Dress Nut

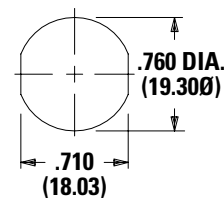


Typical Installation

Install hex nut with enough clearance to allow for dress nut and panel. Place switch through cutout in rear of panel. Install and tighten dress nut by hand, then tighten hex nut. Always tighten assembly with back of panel hex nut to avoid damaging front of panel.

Note: Removable dress nut not available with Y1900A or Y100AA model options.

Panel Mounting



Lock Dimensions

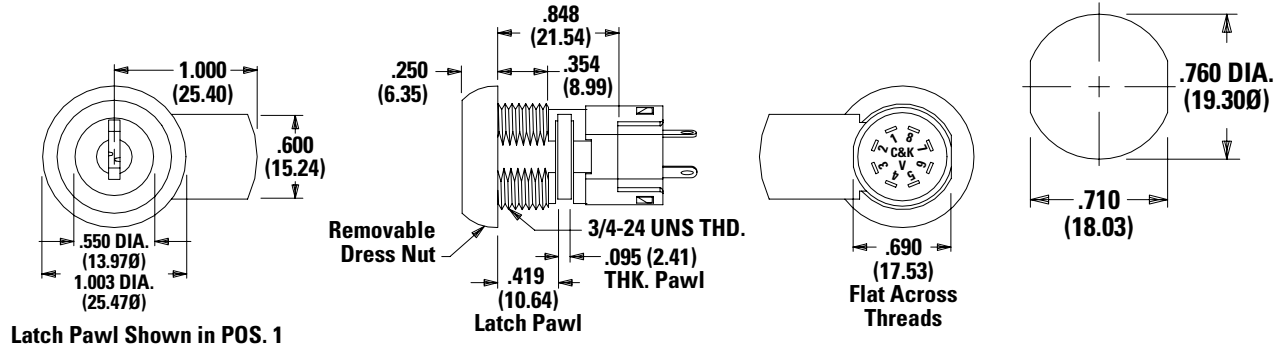
Lock Types	'A'
A, N	0.270 (6.68)
C, R	0.360 (9.14)

Y Series

4, 5 & 6 Tumbler Switchlocks



L Removable Dress Nut with Latch Pawl



Latch Pawl Shown in POS. 1

Mounting Information (All Models)

Panel Thickness

Mounting Styles	A, B Lock Types	C, R Lock Types	V, W Lock Types
D	0.065 - 0.085 (1.65 - 2.16)		0.085 - 0.105 (2.16 - 2.67)
N	0.105 (2.67) max.	0.195 (4.95) max.	0.215 (5.46) max.
L	0.215 (5.46) max.		-
R	0.125 (3.18) max.	0.215 (5.46) max.	-

Available Option Combinations

Mounting Styles	Lock Finishes			Lock Types					
	2	8	F	A	B	C	R	V	W
D	•	•	•	•	•	•	•	•	•
N	•	•	•	•	•	•	•	•	•
L		•	•	•		•	•		
R		•	•			•	•		

Contact Material

Option Code	RoHS Compliant ¹	RoHS Compatible ¹	Contact and Terminal Material		Rating
Q	Yes	Yes	Silver ²	Power	4 amps @ 125 V AC or 28 V DC; 2 amps @ 250 V AC (UL/CSA).
B	Yes	Yes	Gold ¹	Low Level / Dry Circuit	0.4 VA max. @ 20 V AC or DC max.
G	Yes	Yes	Gold Silver ³	Low Level / Dry Circuit or Power	0.4 VA max. @ 20 V AC or DC max. or 4 amps @ 125 V AC or 28 V DC; 2 amps @ 250 V AC (UL/CSA)

Note: See Technical Data section of this catalog for RoHS compliant and compatible definitions and specifications.

¹ Contacts & Terminals: Copper, with gold plate over nickel plate.

² Contacts & Terminals: Copper, silver plated (std. with all termination options).

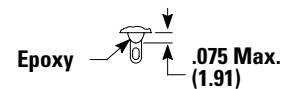
³ Contacts & Terminals: Copper, with gold plate over silver plate.

All models with all options when ordered with 'G' or 'Q' contact material.

Seal

None No Seal

E Epoxy Seal



Y Series

4, 5 & 6 Tumbler Switchlocks



Available Hardware



Key Code: A126
4 Tumbler
Part Number: (One Key) 115140126
Material: Brass
Finish: Nickel plate

Key Code: D001
5 Tumbler
Part Number: (One Key) 115441001
Material: Brass
Finish: Nickel plate



Key Code: AAAA
Part Number: (One Key) 363C1AAAA
Material: Zinc alloy
Finish: Chrome plate

Disclaimer Notice - Information furnished is believed to be accurate and reliable. However, users should independently evaluate the suitability of and test each product selected for their own applications. Littelfuse products are not designed for, and may not be used in, all applications. Read complete Disclaimer Notice at <http://www.littelfuse.com/disclaimer-electronics>.

Looking for pricing, stock, or lifecycle information?

Click below to explore more details on WIN SOURCE:

 [View Y2011U2V203NQ](#) on WIN SOURCE

 [C&K Components](#) Information

Optimize Your Supply Chain with WIN SOURCE Solutions

-  Global Sourcing Solution
-  Obsolete Management
-  Cost Control Management
-  Shortage Management
-  Alternative Solution
-  Excess Inventory Management