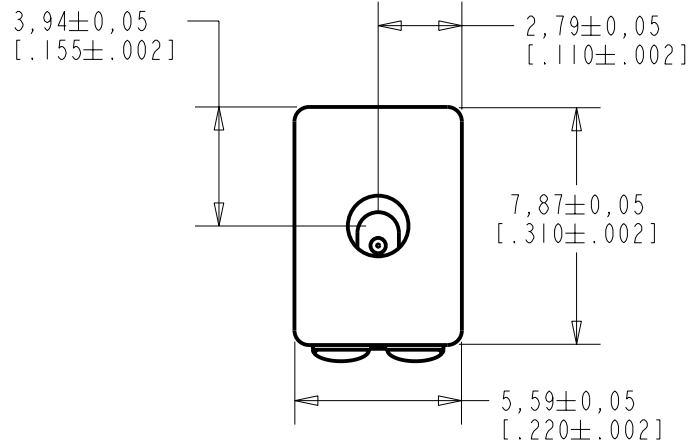




**THE DATASHEET OF**  
**BJ-28471-000**

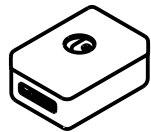
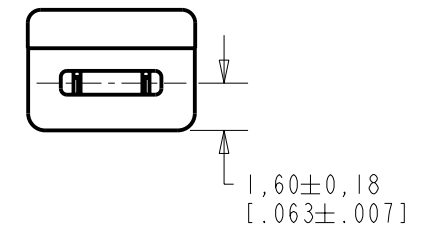
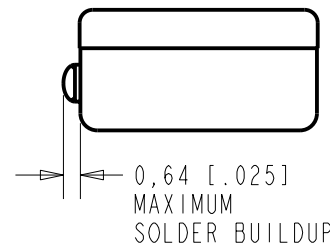
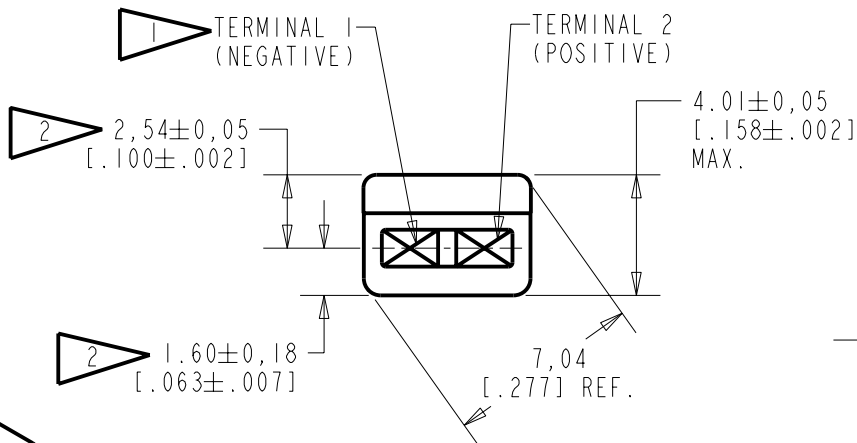


**BJ-28471-000**  
SHT 1.1



NOTES:

- 1 A DECREASE IN PRESSURE AT THE SOUND INLET WILL CAUSE A POSITIVE VOLTAGE AT TERMINAL 2 RELATIVE TO TERMINAL 1.
- 2 LOCATED FROM TWO SURFACES FOR CUSTOMER CONVENIENCE. ONLY APPLICABLE FROM ONE SURFACE, NOT TO BE USED TOGETHER.



SCALE 2:1  
NOMINAL WEIGHT  
.66 GRAM

DIMENSIONS IN MILLIMETERS [INCHES]

Revision	C.O. #	Implementation Date	RELEASE LEVEL	REVISION
A	CI0103470	12-9-05	Released	A

SCALE: 4:1		DR. BY	DATE
DO NOT SCALE DRAWING		CRG	12-9-05
TITLE: MICROPHONE		CK. BY	DATE
OUTLINE DRAWING		GJP	1-5-06
BJ-28471-000		APP. BY	DATE
SHT 1.1		GJP	1-5-06

**KNOWLES ELECTRONICS**  
ITASCA, ILLINOIS U.S.A.

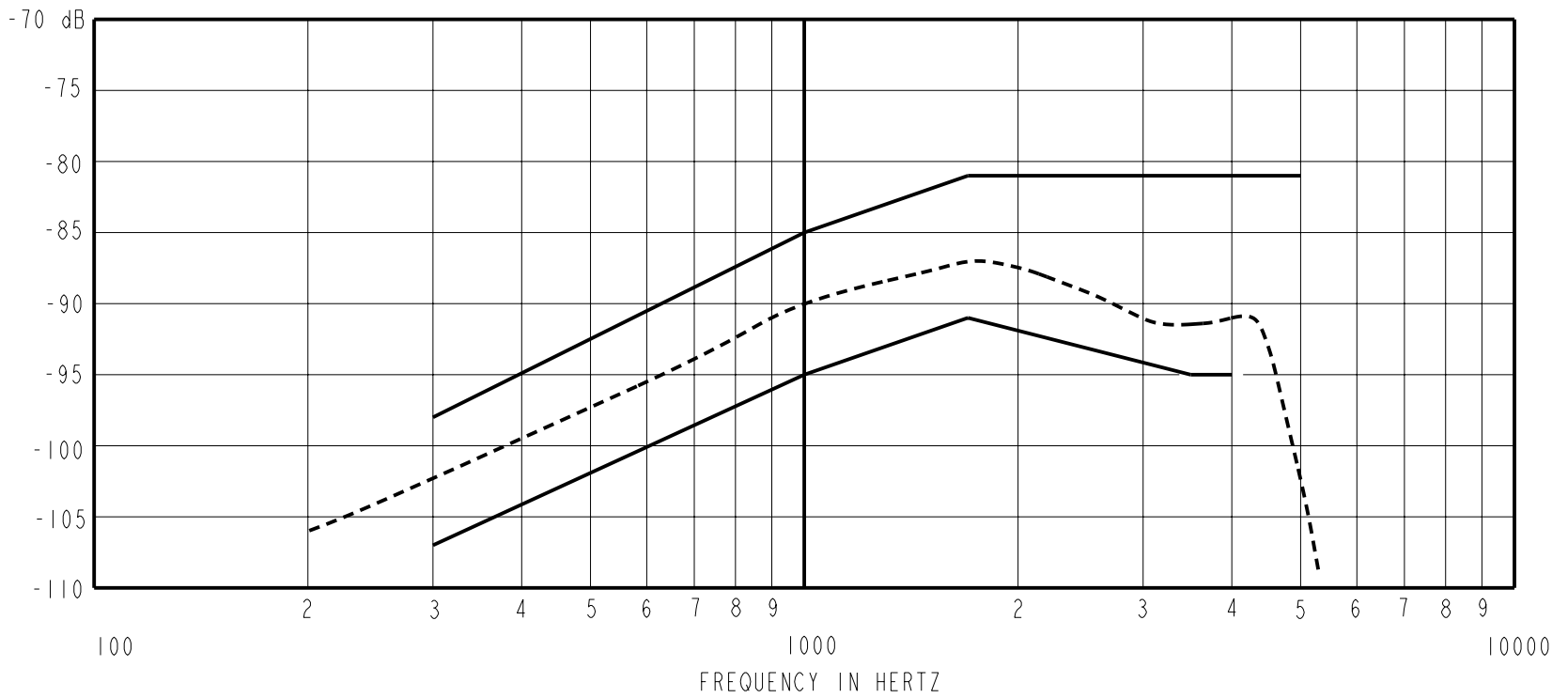
WHEN TEST LIMITS ARE USED TO ESTABLISH INCOMING INSPECTION ACCEPTANCE/REJECTION CRITERIA, CORRELATION OF TEST EQUIPMENT WITH KNOWLES IS ALSO REQUIRED FOR ELIMINATION OF EQUIPMENT AND TEST METHOD VARIATIONS.

NO DAMPING

BJ-28471-000

SHEET 2.1

SENSITIVITY IN dB RELATIVE TO 1.0 VOLT/0.1 Pa (N/M<sup>2</sup>)  
FOR CONDITIONS SHOWN BELOW.



NOTES: SENSITIVITY DEVICE CONFORMITY  
FREQUENCY MIN. NOM. MAX. RANGE OF DEVIATION FROM 1KHz

- LOAD RESISTANCE FOR SENSITIVITY MEASUREMENT: 150 OHMS
- OUTPUT IMPEDANCE AT 1kHz: 150 OHMS NOMINAL
- NOMINAL DC RESISTANCE AT 20°C: 34.5 OHMS
- TESTED WITH REAR PORT OPEN TO LARGE SOUND FREE VOLUME
- 

<u>SENSITIVITY</u>		
<u>FREQUENCY</u>	<u>MIN.</u>	<u>MAX.</u>
300	-107.0	-97.0
1000	-95.0	-85.0
1700	-91.0	-81.0
3500	-95.0	---
4000	-95.0	---
5000	---	-81.0

- FOR EQUAL SPL APPLIED TO FRONT AND REAR PORTS IN PHASE AT 1000 Hz THE SENSITIVITY WILL REDUCE BY AT LEAST 10 dB.
- FRONT PORT LOCATION: 0N  
REAR PORT LOCATION: 12N

Revision	C.O. #	Implementation Date	RELEASE LEVEL	REVISION
			<b>Released</b>	<b>A</b>
A	C10103470	12-9-05		

**KNOWLES ELECTRONICS**  
ITASCA, ILLINOIS U.S.A.

WHEN TEST LIMITS ARE USED TO ESTABLISH INCOMING INSPECTION ACCEPTANCE/REJECTION CRITERIA, CORRELATION OF TEST EQUIPMENT WITH KNOWLES IS ALSO REQUIRED FOR ELIMINATION OF EQUIPMENT AND TEST METHOD VARIATION

TITLE: **MICROPHONE** **BJ-28471-000**  
PERFORMANCE SPECIFICATION **SHT 2.1**

DR. BY	DATE
CRG	12-9-05
CK. BY	DATE
GJP	1-5-06
APP. BY	DATE
GJP	1-5-06

## Looking for pricing, stock, or lifecycle information?

Click below to explore more details on WIN SOURCE:

 [View BJ-28471-000 on WIN SOURCE](#)

 [Knowles](#) Information

## Optimize Your Supply Chain with WIN SOURCE Solutions

-  Global Sourcing Solution
-  Obsolete Management
-  Cost Control Management
-  Shortage Management
-  Alternative Solution
-  Excess Inventory Management