



**THE DATASHEET OF
SMFLP2-144.0**



NOTES:

1. ALLOWABLE FLEXIBLE LIGHT PIPE CUT LENGTH AVAILABLE IN INCREMENTS OF 0.1".
2. MINIMUM BEND RADIUS OF FLEXIBLE LIGHT PIPE: 1.22" [31mm].
3. COMPONENTS SHIPPED NON-ASSEMBLED.

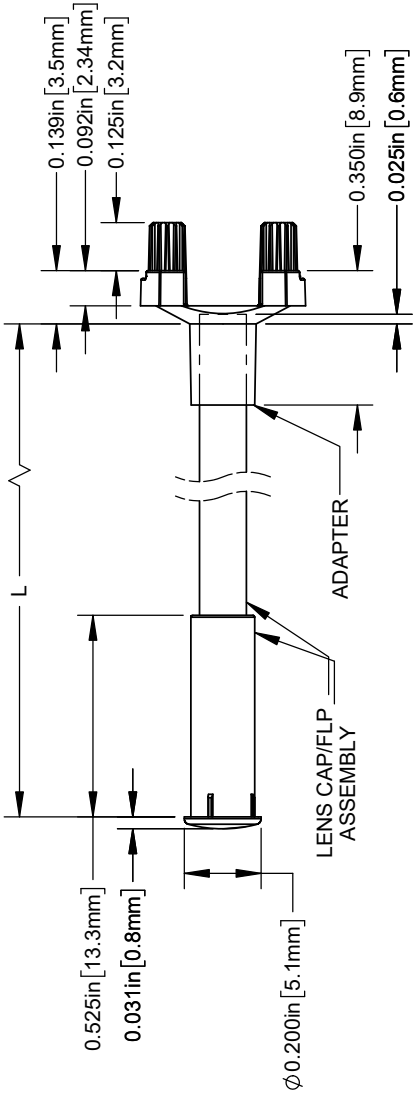
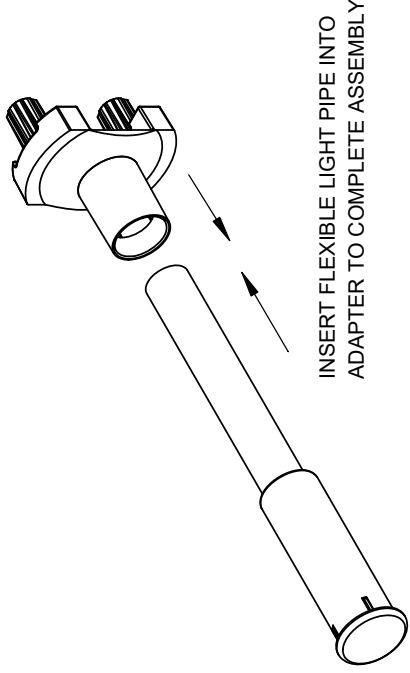


TABLE 1 - LENGTH	
LENGTH (L)*	TOLERANCE
1.00" - 16.00"	±0.05"
16.1" - 40.00"	±0.15"
40.1" - 80.00"	±0.30"
80.1" - 3,940.00"	±0.5%

*AVAILABLE IN 0.1" INCREMENTS



0.151
 2X $\phi 0.100$ in $+0.000$ -0.005 [2.254]
 LED MOUNTING
 RECOMMENDED
 & MOUNTING

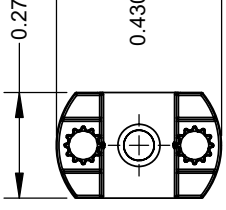


CUSTOMER

STANDARD TOLERANCE
 (UNLESS OTHERWISE SPECIFIED)
 DECIMALS
 .X ±.1
 .XX ±.02
 .XXX ±.010
 ANGULAR
 X° ±1°

DESIGNED: B. OLIVER
 REVISIONS: K. BARON
 CHECKED: A. VALDEZ
 DATE: 9/14/2005
 DATE: 4/24/2020
 DATE: 4/24/2020

REV.	DESCR.
A	Engineering Release
B	Added Note #1
C	Updated Table For Length
D	ECO-1241: Updated Record



Looking for pricing, stock, or lifecycle information?

Click below to explore more details on WIN SOURCE:

 [View SMFLP2-144.0 on WIN SOURCE](#)

 [Bivar Inc. Information](#)

Optimize Your Supply Chain with WIN SOURCE Solutions

-  Global Sourcing Solution
-  Obsolete Management
-  Cost Control Management
-  Shortage Management
-  Alternative Solution
-  Excess Inventory Management