



# THE DATASHEET OF F-362XP



### F-362XP

#### Electrical Specifications (@25C)

- Maximum Power: 10.0 VA
- Primary: Series: 230V @ 50/60 Hz  
Parallel: 115V @ 50/60Hz
- Secondary: Series: 20.0V CT @ 0.500 Amps  
Parallel: 10.0V CT @ 1.00 Amps

#### Description:

The F-362XP is part of a wide selection of plug-in types that meet the needs of PC boards and solid state power supply design. This transformer can satisfy power as well as control and instrumentation applications.

#### Construction:

Wound on a single channel nylon bobbin. Materials are UL recognized, Class B (130° C) rated.

#### Safety:

These products are 100% hipot tested with an insulation of 1500V between primary and secondary windings.

#### Dimensions:

Units: In inches

A	B	C	D	E	F	G
1.625	2.812	1.437	1.875	.250	1.312	2.375

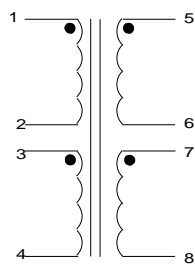
Mounting holes: 0.187 in.

Pin length: 0.187 in.

Pin size: 0.20 x .041 in.

Weight: 11.0 oz

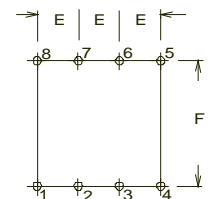
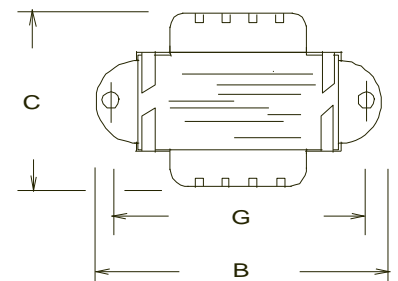
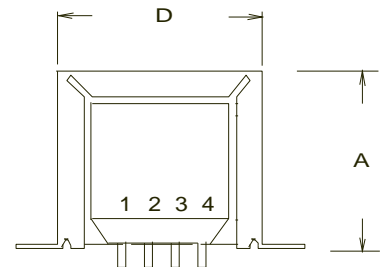
#### Schematic:



- Primary: Series - 1 to 4, Jumper 2 to 3  
Parallel - 1 to 4, Jumper 1 to 3 and 2 to 4
- Secondary: Series - 5 to 8, Jumper 6 to 7  
Parallel - 5 to 8, Jumper 5 to 7 and 6 to 8



**RoHS Compliance:** As of manufacturing date February 2016, all standard products meet the requirements of 2015/863/EU, known as the RoHS 3 initiative.

\*Upon printing, this document is considered "uncontrolled". Please contact Triad Magnetics website for the most current version. For soldering and washing information please see <http://www.triadmagnetics.com/faq.html>



## Looking for pricing, stock, or lifecycle information?

Click below to explore more details on WIN SOURCE:

-  [View F-362XP](#) on WIN SOURCE
-  [Triad Magnetics](#) Information

## Optimize Your Supply Chain with WIN SOURCE Solutions

-  Global Sourcing Solution
-  Obsolete Management
-  Cost Control Management
-  Shortage Management
-  Alternative Solution
-  Excess Inventory Management